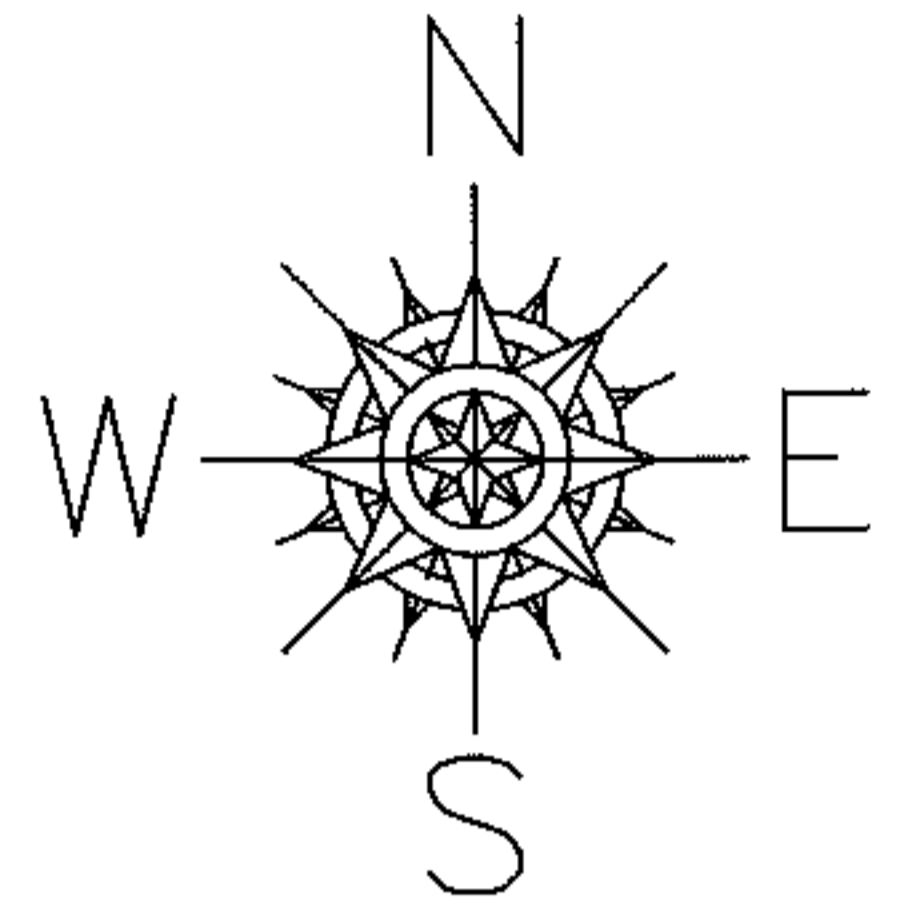


PARENT PARCEL: 05-00-010-101-033

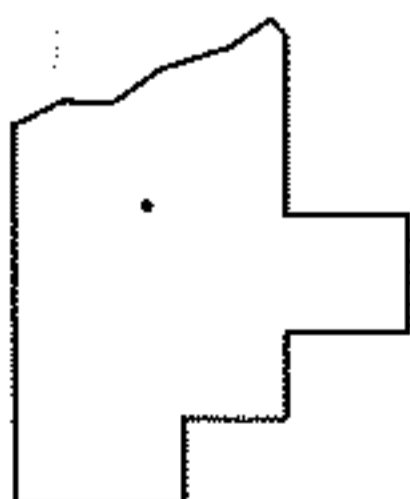
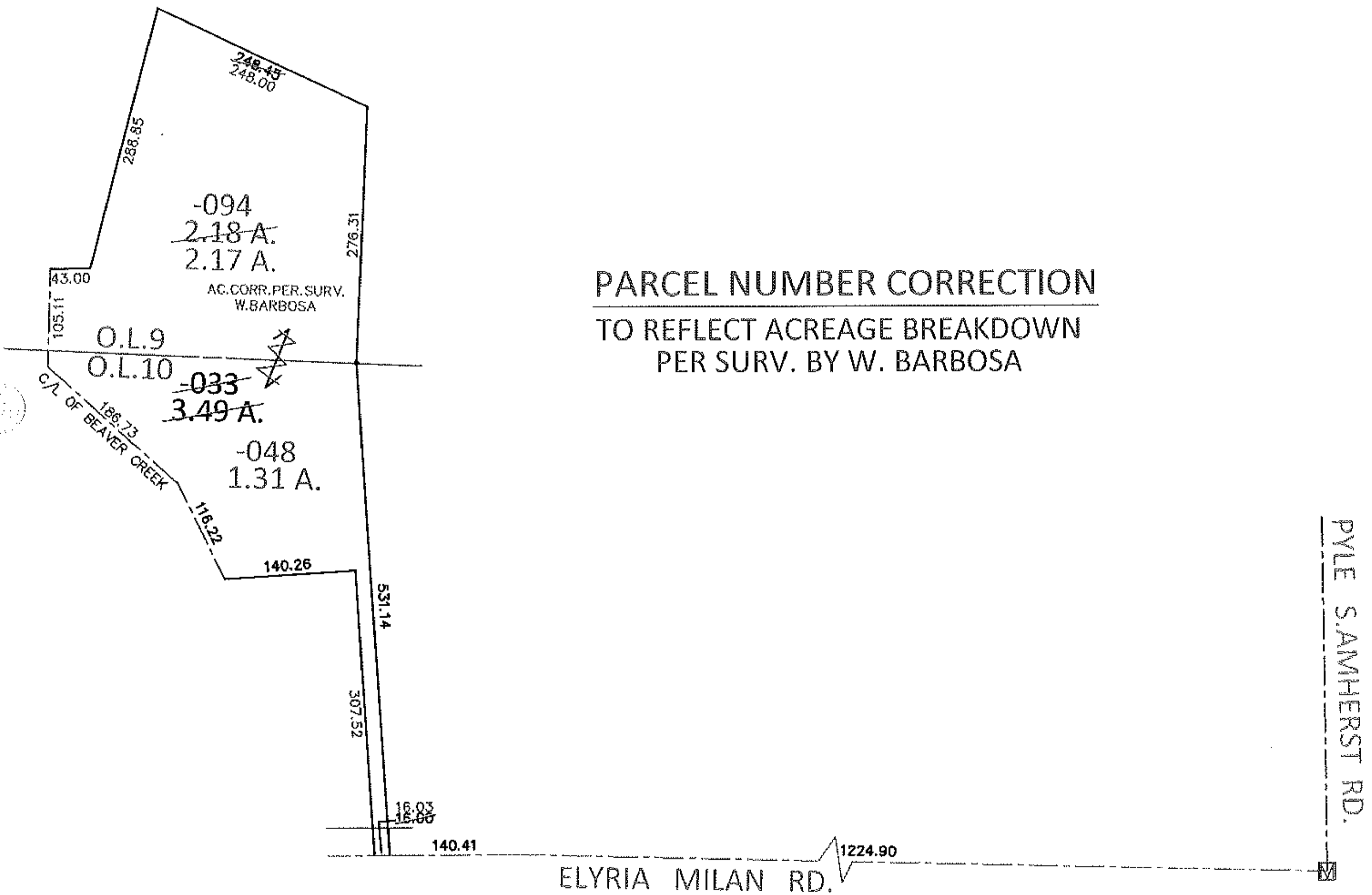
CHILD PARCEL: 05-00-009-000-094, 05-00-010-101-048

13-02819-D

STARTING POINT: AT A MON BOX AT THE INTERSECTION OF C/L OF ELYRIA MILAN RD. AND C/L OF PYLE S.AMHERST RD.



PARCEL NUMBER CORRECTION
TO REFLECT ACREAGE BREAKDOWN
PER SURV. BY W. BARBOSA



SPLITS/DEEDS PROCESSED

LORAIN COUNTY TAX MAP DEPARTMENT
226 MIDDLE AVE. ELYRIA, OHIO

SURVEYED BY: WILFREDO BARBOSA

CLOSURE: .01:10,000

MAP PAGE(S): 5-00-009-B, 5-00-010-B

APPROVED BY: RRM DATE: 10-8-13

SCALE: 1"=200 PRIOR INST.: 20120426006