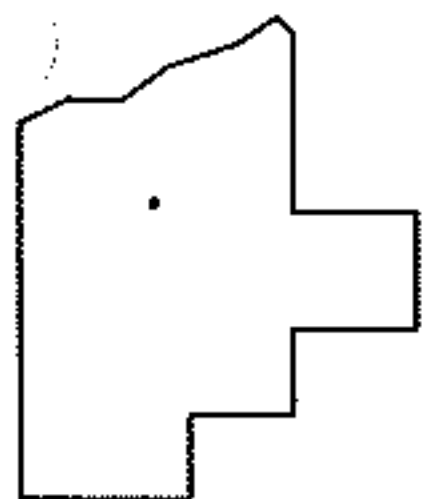
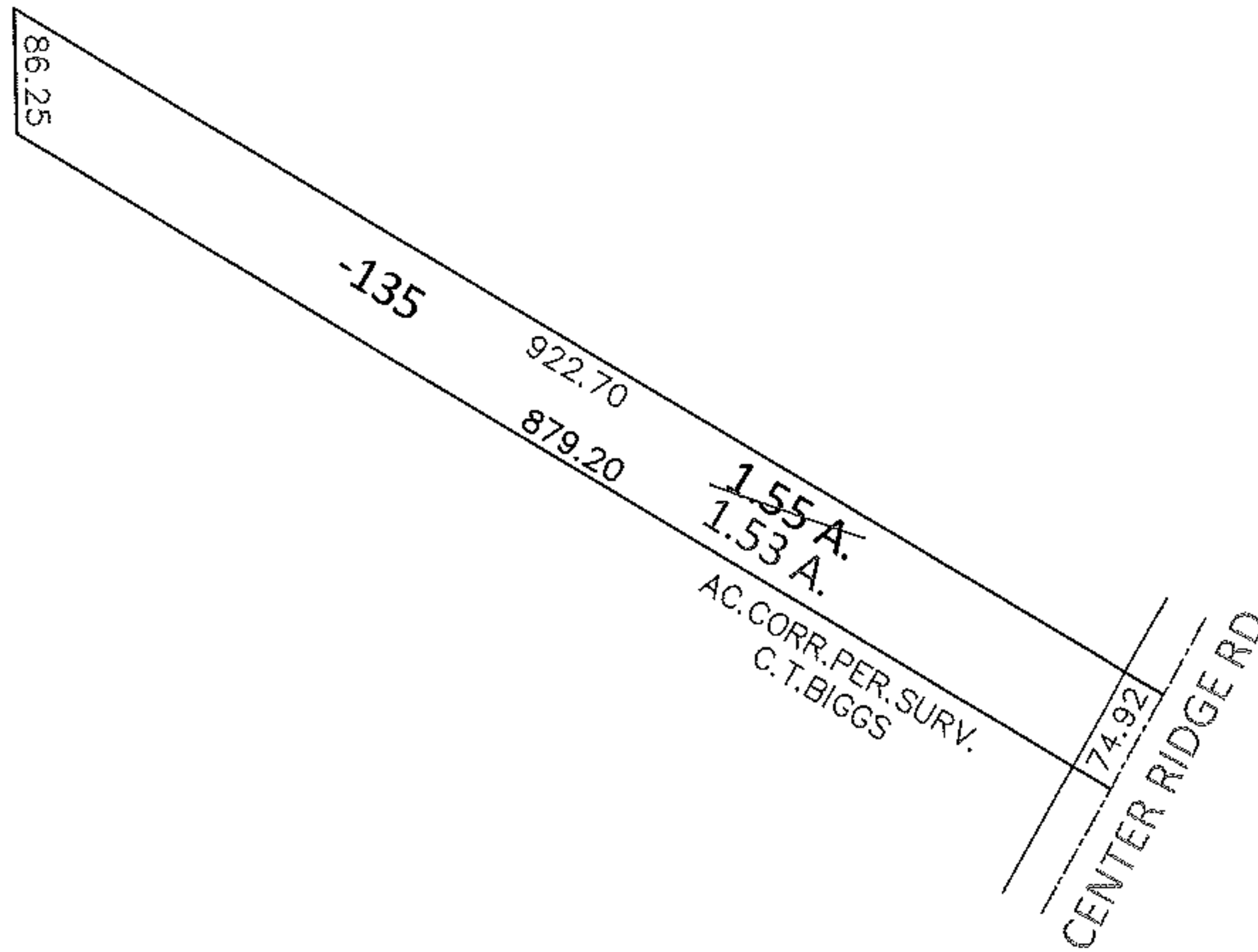
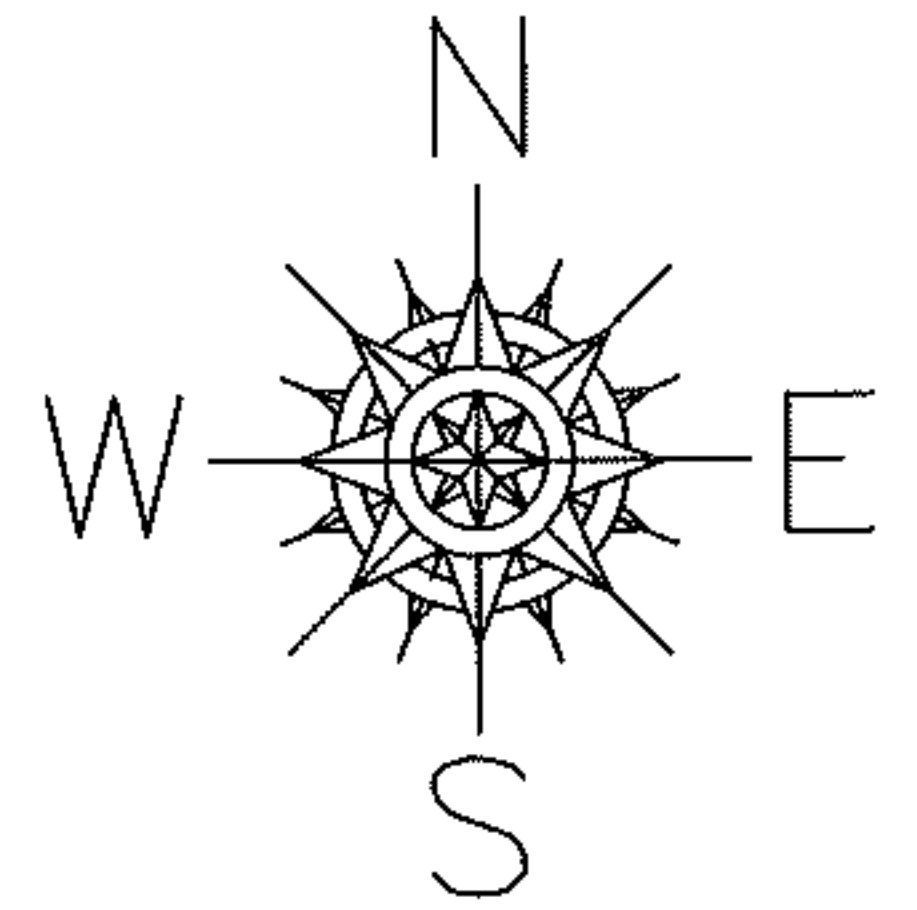


PARENT PARCEL: 07-00-006-102-135

CHILD PARCEL: _____

13-02815-A

STARTING POINT: MOST SOUTHERLY CORNER OF LAND CONVEYED TO EDWARD P. FEATHERSTONE (DV 200/22)



SPLITS/DEEDS PROCESSED

LORAIN COUNTY TAX MAP DEPARTMENT
226 MIDDLE AVE. ELYRIA, OHIO

SURVEYED BY: C.T.BIGGS

CLOSURE: 1:7009.11

MAP PAGE(S): 7-00-006-B

APPROVED BY: RRM DATE: 10-7-13

SCALE: 1"= 200 PRIOR INST.: 20130481421