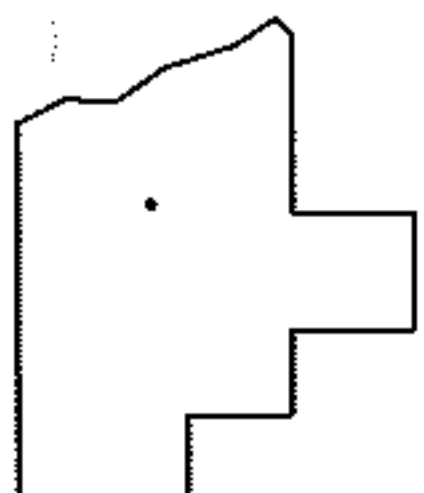
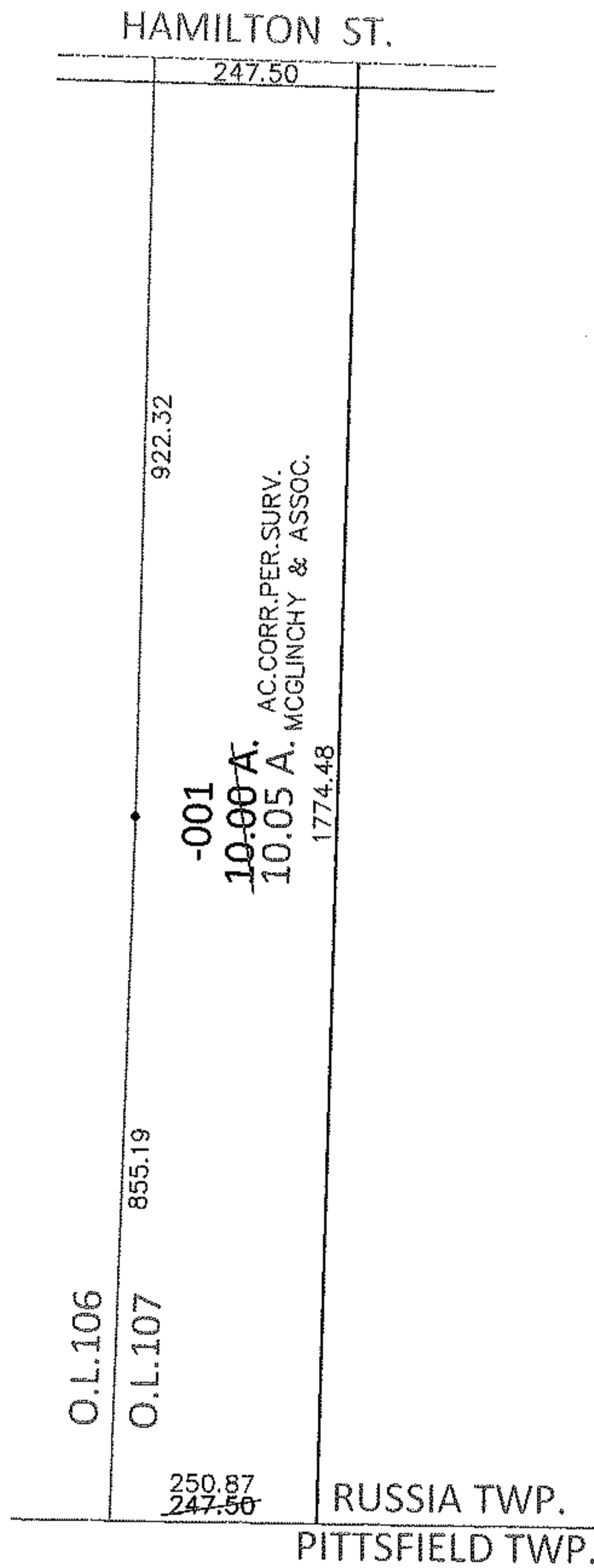
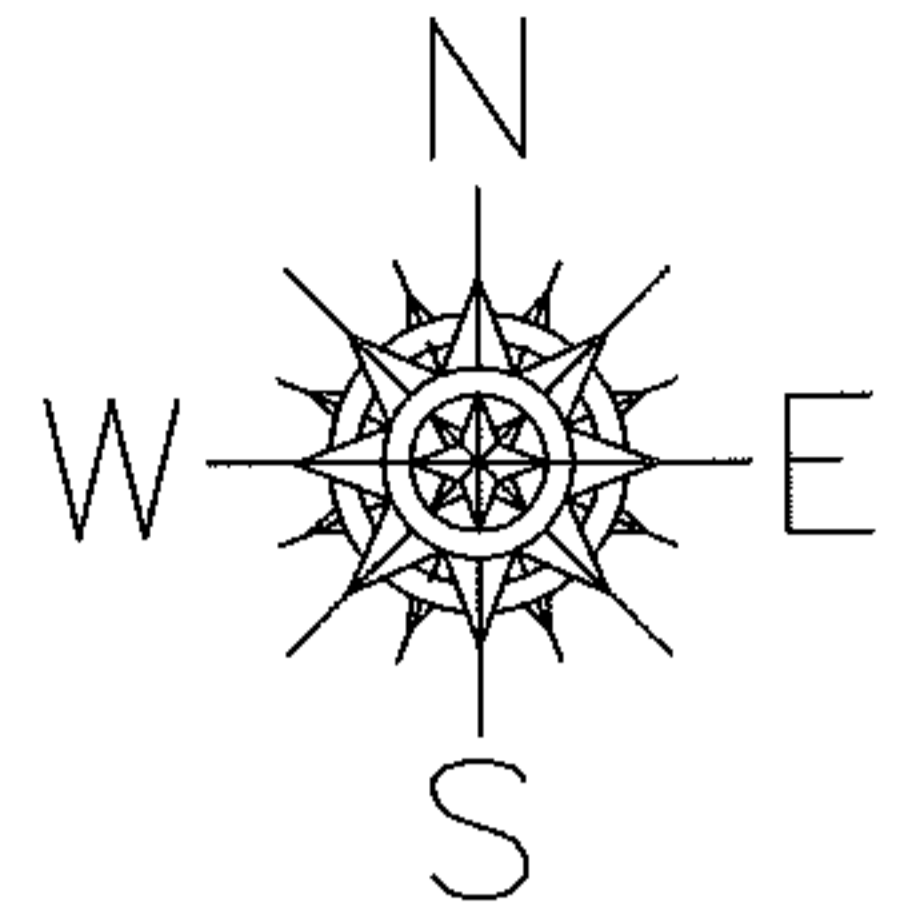


PARENT PARCEL: 09-00-107-000-001

CHILD PARCEL: _____

13-02814-A

STARTING POINT: NORTHWEST CORNER OF O.L.107



SPLITS/DEEDS PROCESSED

LORAIN COUNTY TAX MAP DEPARTMENT
226 MIDDLE AVE. ELYRIA, OHIO

SURVEYED BY: MCGLINCHY & ASSOC.

CLOSURE: .01:10,000

MAP PAGE(S): 9-G

APPROVED BY: RRM DATE: 10-3-13

SCALE: 1" = 300 PRIOR INST.: 20130480767