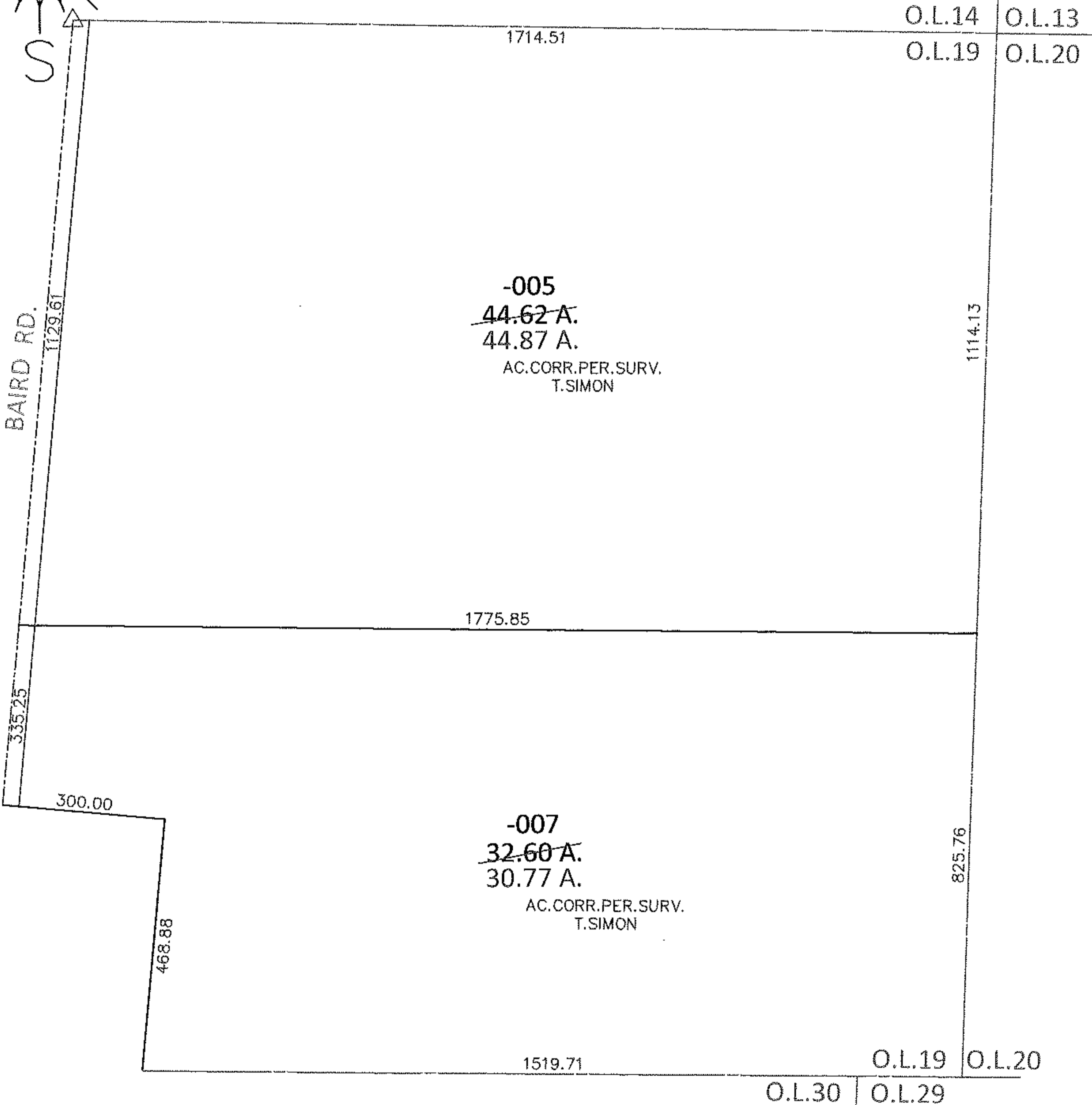
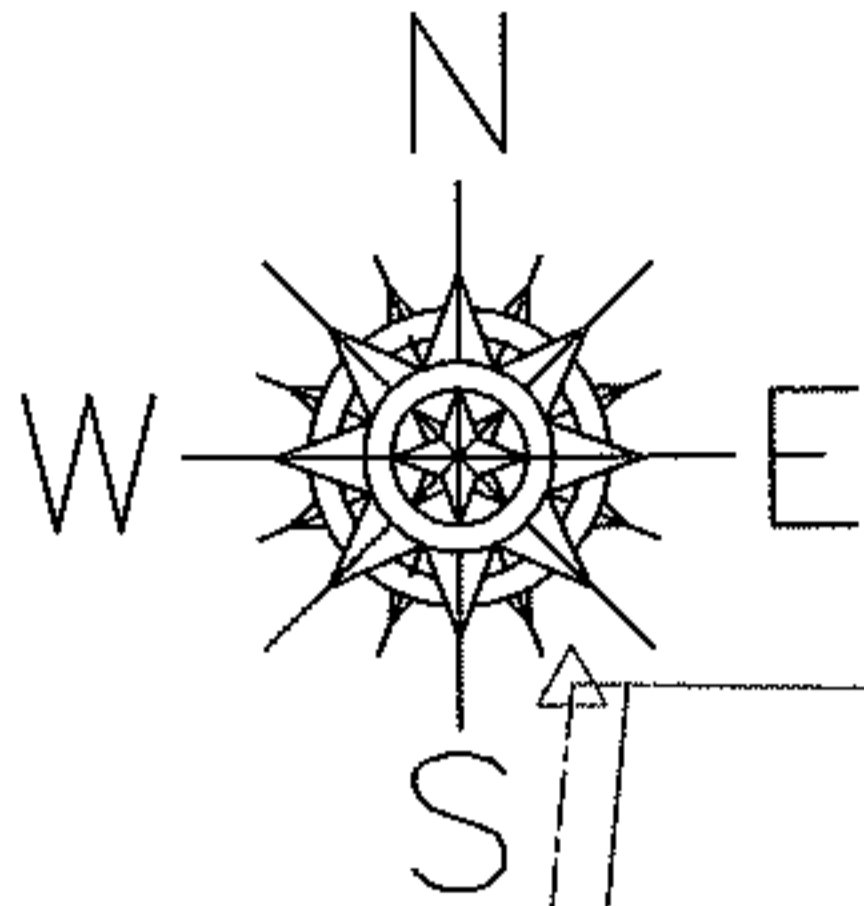


PARENT PARCEL: 13-10-019-000-005, -007

13-02813-X

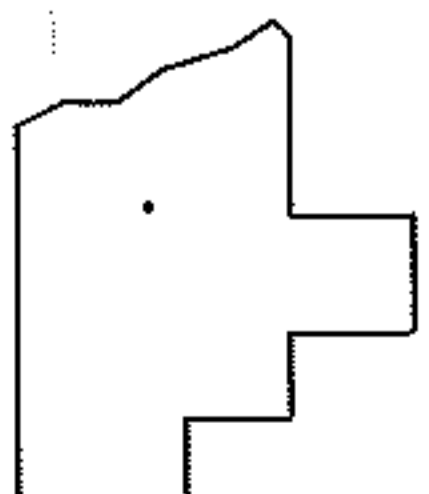
CHILD PARCEL:

STARTING POINT: AT A R.R.S. AT THE INTERSECTION OF C/L OF BAIRD RD. AND NORTH LINE OF O.L.19



-005
~~44.62 A.~~
 44.87 A.
 AC. CORR. PER. SURV.
 T. SIMON

-007
~~32.60 A.~~
 30.77 A.
 AC. CORR. PER. SURV.
 T. SIMON



SPLITS/DEEDS PROCESSED

LORAIN COUNTY TAX MAP DEPARTMENT
226 MIDDLE AVE. ELYRIA, OHIO

SURVEYED BY: THOMAS A. SIMON

CLOSURE: .01:10,000

MAP PAGE(S): 13-B

APPROVED BY: RRM DATE: 9-27-13

SCALE: 1" = 300 PRIOR INST.: 20070214958