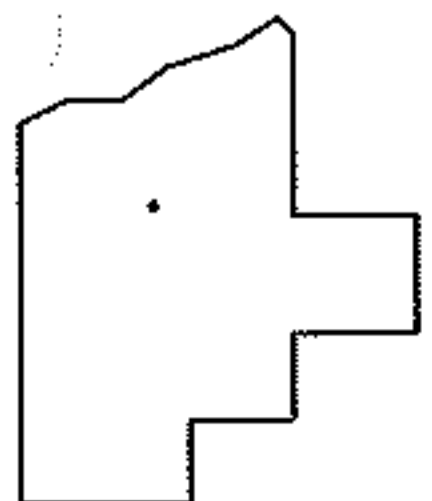
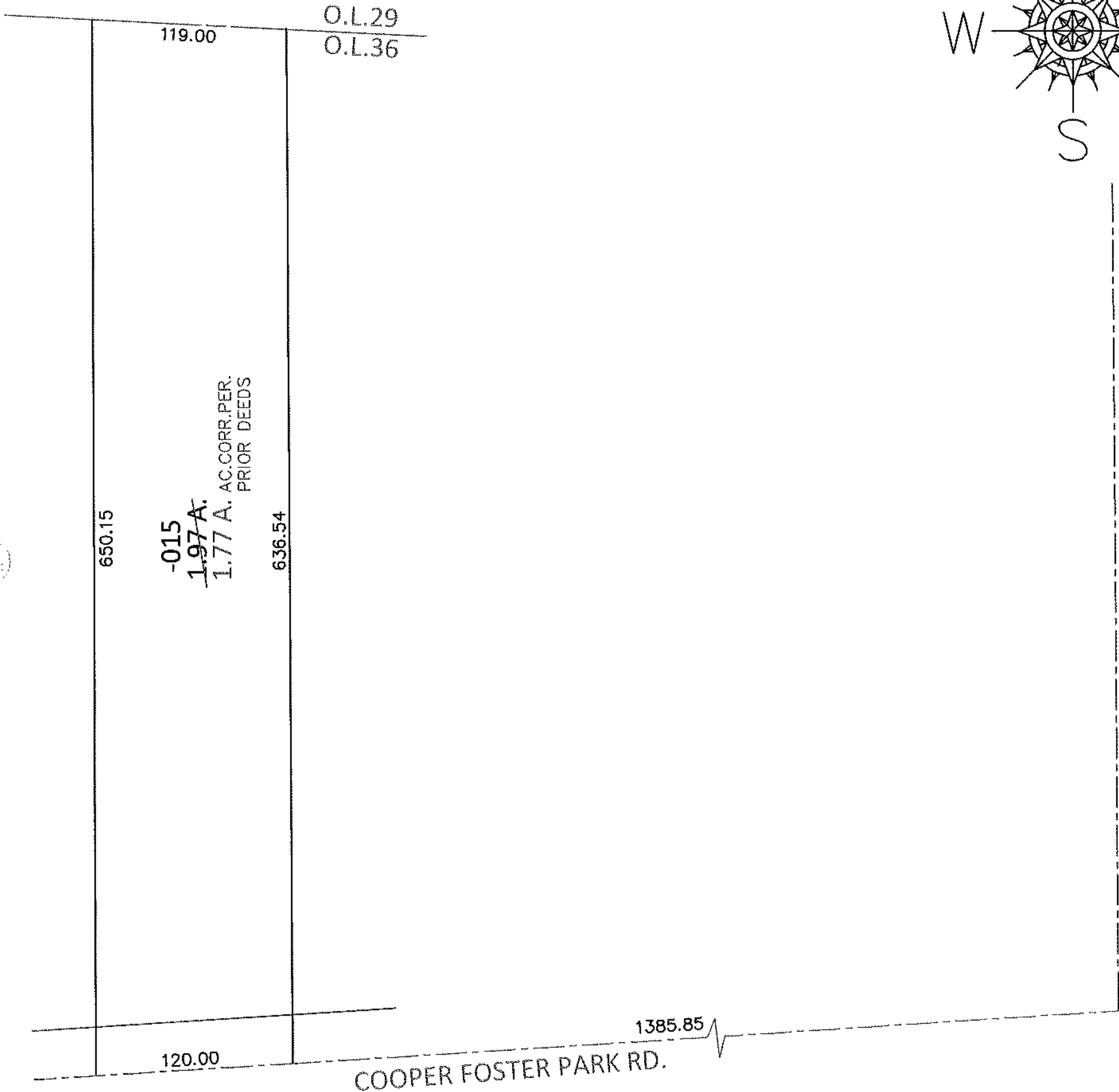
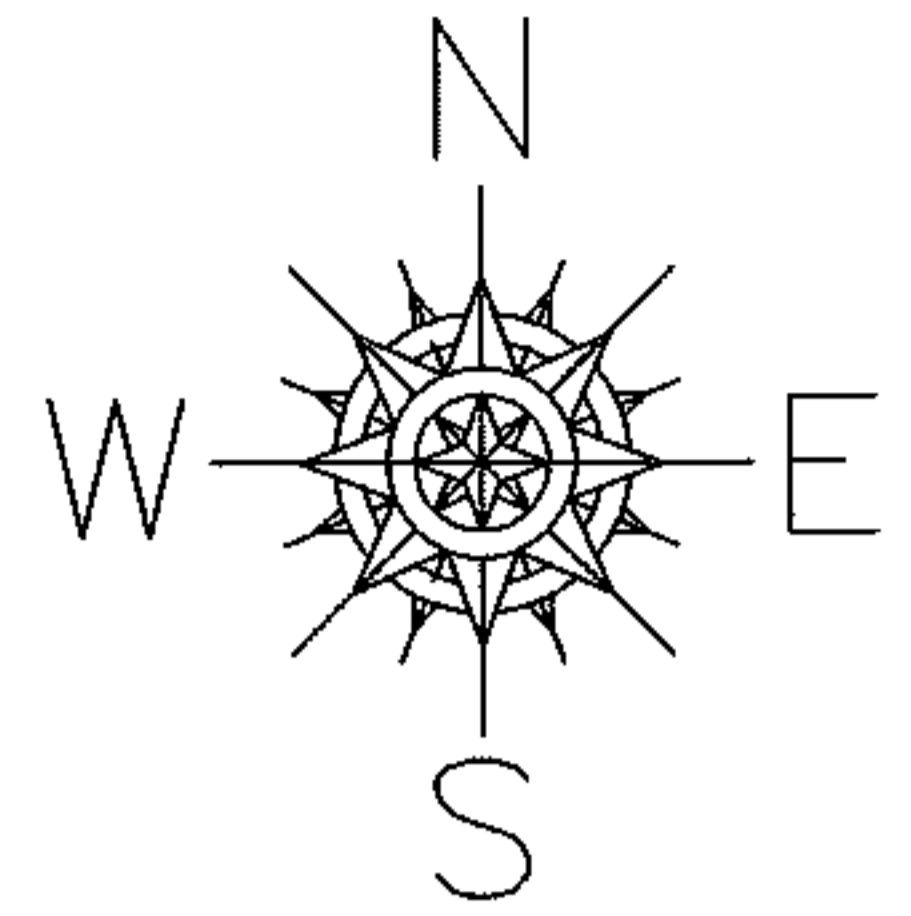


PARENT PARCEL: 01-00-036-000-015

CHILD PARCEL: _____

13-02812-A

STARTING POINT: INTERSECTION OF C/L OF COOPER FOSTER PARK RD. AND C/L SUNNYSIDE RD.



SPLITS/DEEDS PROCESSED

LORAIN COUNTY TAX MAP DEPARTMENT
226 MIDDLE AVE. ELYRIA, OHIO

SURVEYED BY: N/A

CLOSURE: 1:6897.11

MAP PAGE(S): 1-00-036-A

APPROVED BY: RRM DATE: 9-27-13

SCALE: 1"= 100 PRIOR INST.: 20040032468