

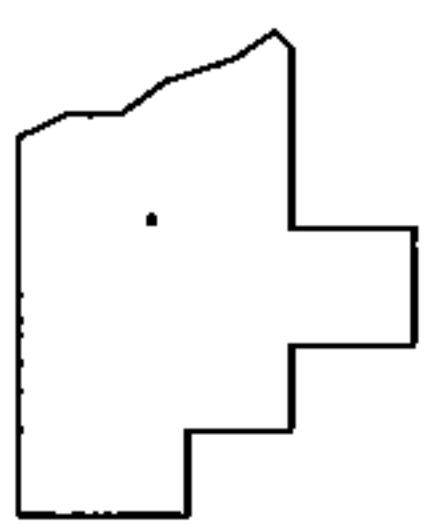
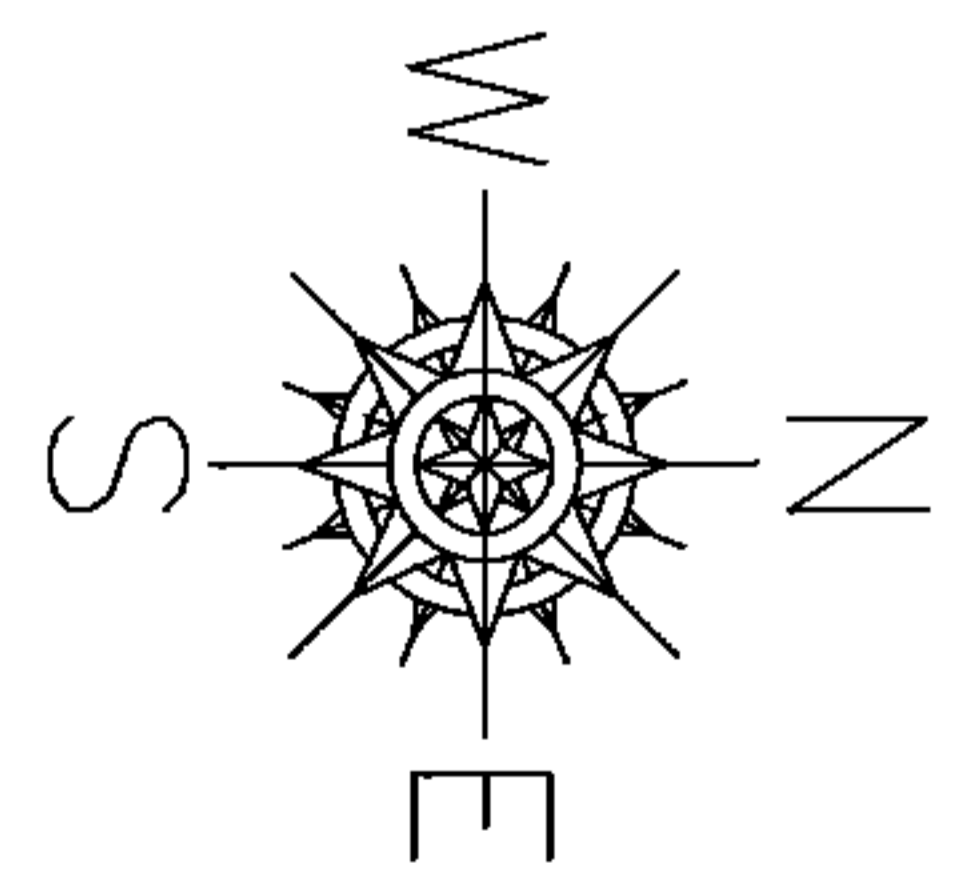
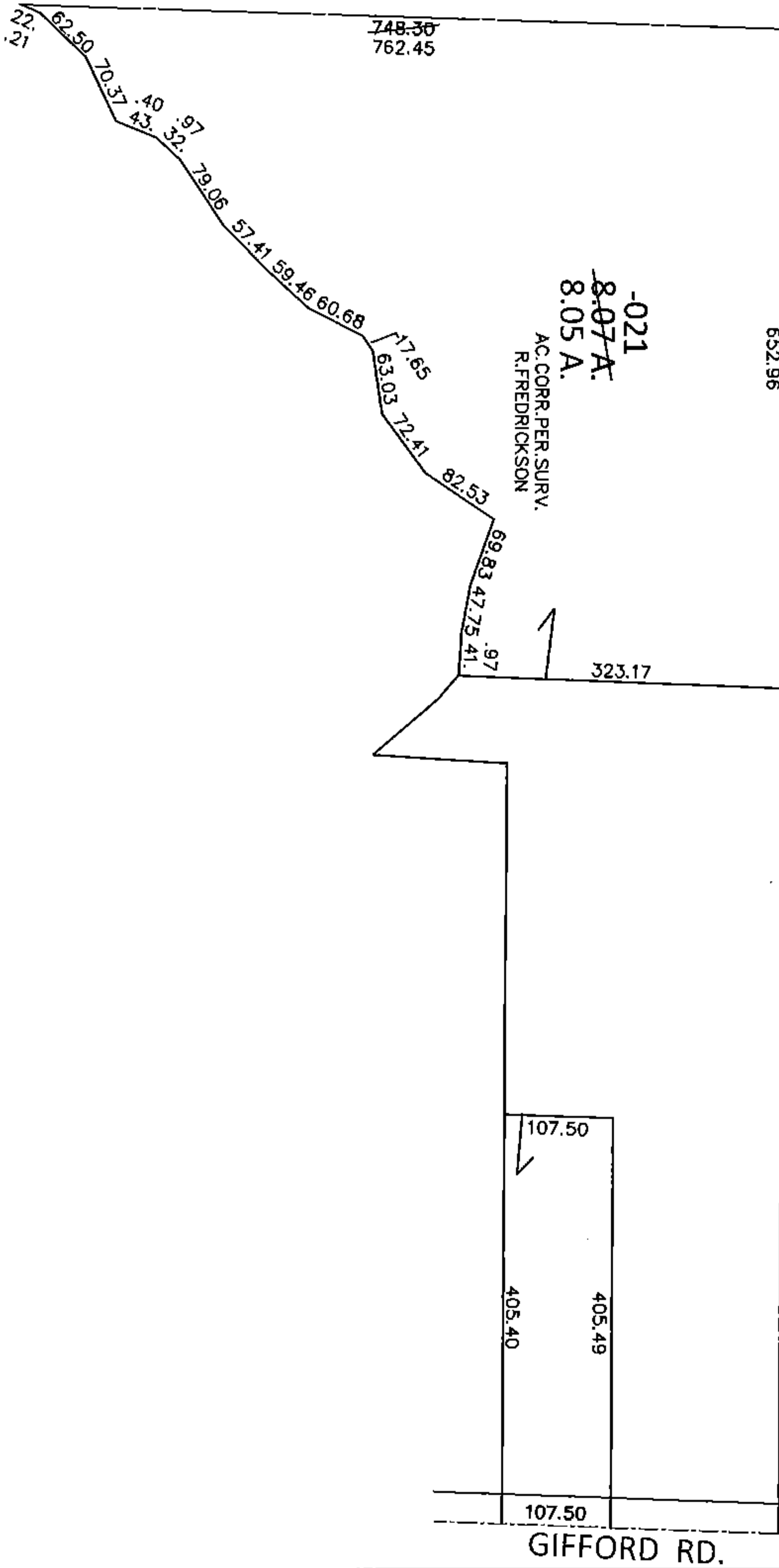
PARENT PARCEL: 13-11-027-000-021

CHILD PARCEL: _____

STARTING POINT: NORTHWEST CORNER OF O.L.27

13-02811-A

O.L.15
O.L.14
O.L.26
O.L.27



SPLITS/DEEDS PROCESSED

LORAIN COUNTY TAX MAP DEPARTMENT
226 MIDDLE AVE. ELYRIA, OHIO

SURVEYED BY: RICHARD A. FREDRICKSON

CLOSURE: .01:10,000

MAP PAGE(S): 13-11-027

APPROVED BY: RRM DATE: 9-24-13

SCALE: 1"= 200 PRIOR INST.: DV 1087/488