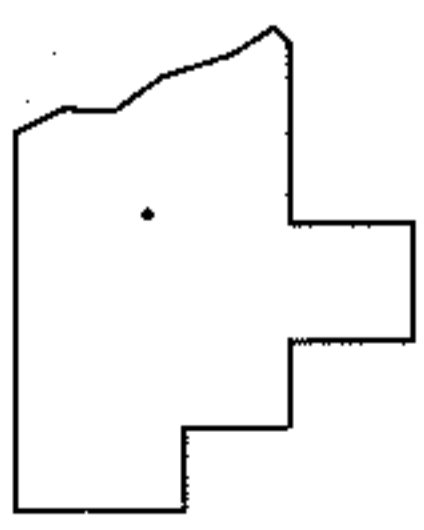
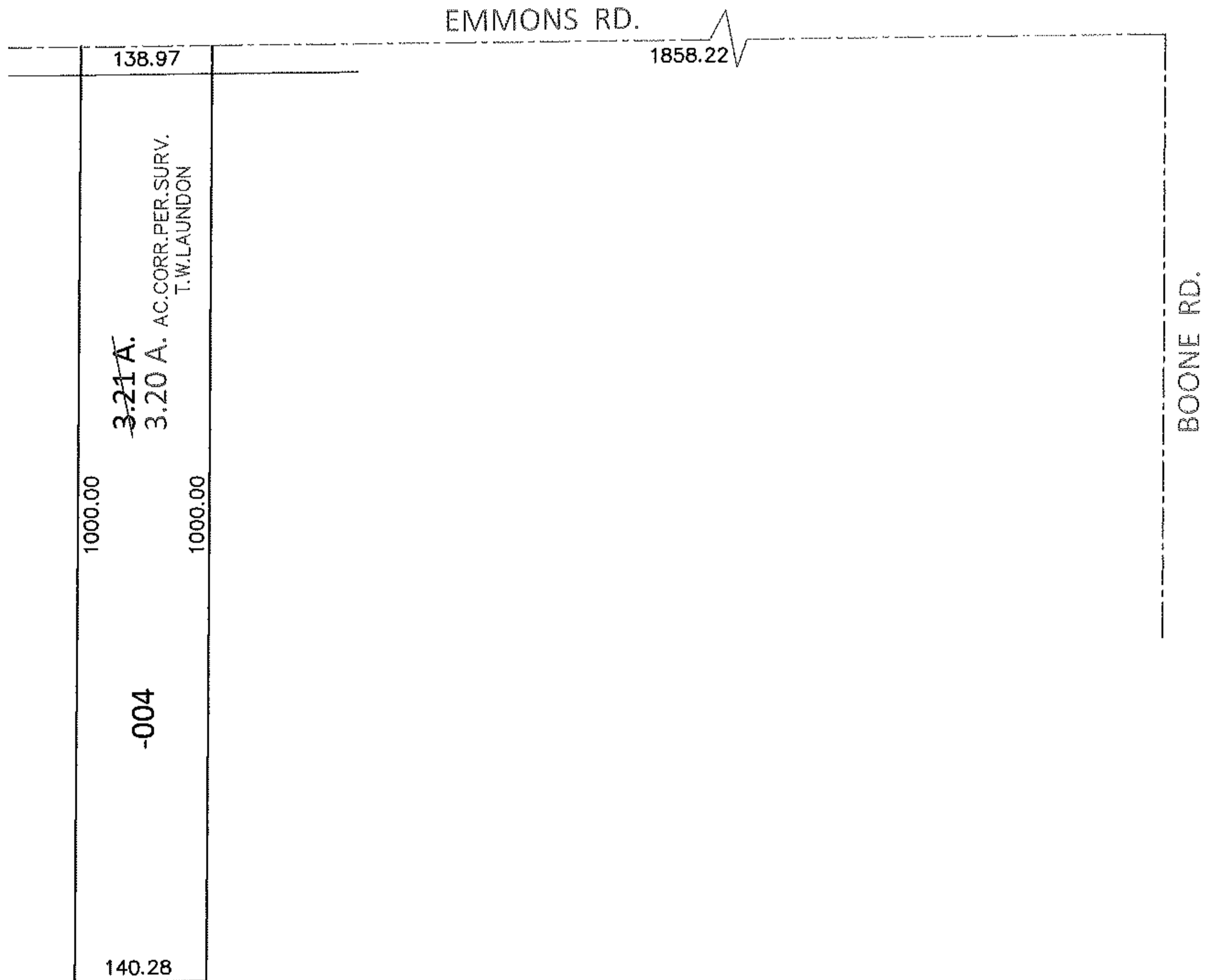
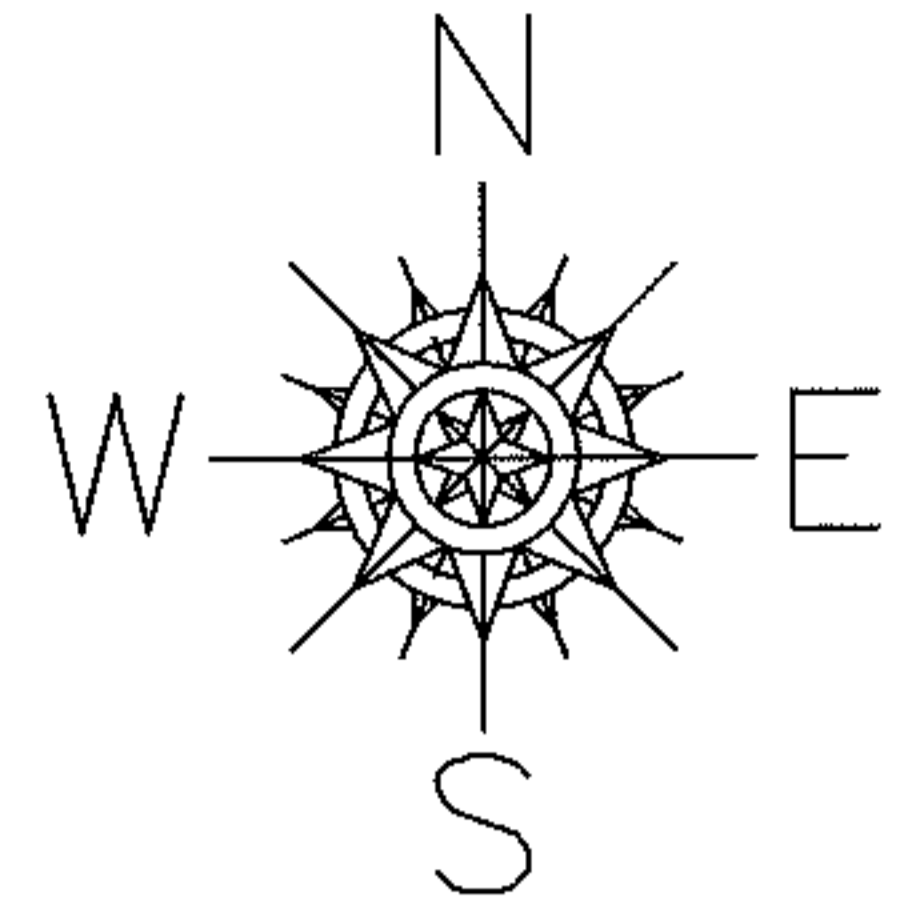


PARENT PARCEL: 12-00-029-000-004

CHILD PARCEL:

13-02808-A

STARTING POINT: INTERSECTION OF C/L OF EMMONS RD. AND C/L OF BOONE RD.



**SPLITS/DEEDS PROCESSED**

LORAIN COUNTY TAX MAP DEPARTMENT  
226 MIDDLE AVE. ELYRIA, OHIO

SURVEYED BY: T.W. LAUNDON

CLOSURE: .00:10,000

MAP PAGE(S): 12-G

APPROVED BY: RRM DATE: 9-20-13

SCALE: 1"= 200 PRIOR INST.: 20130479428