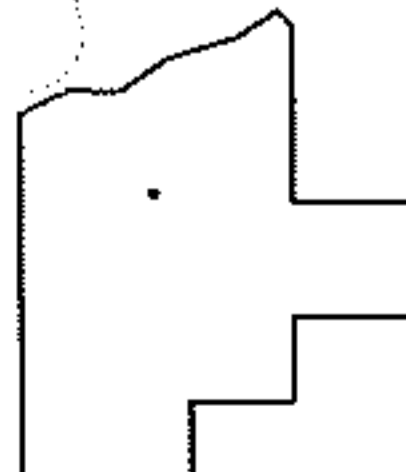
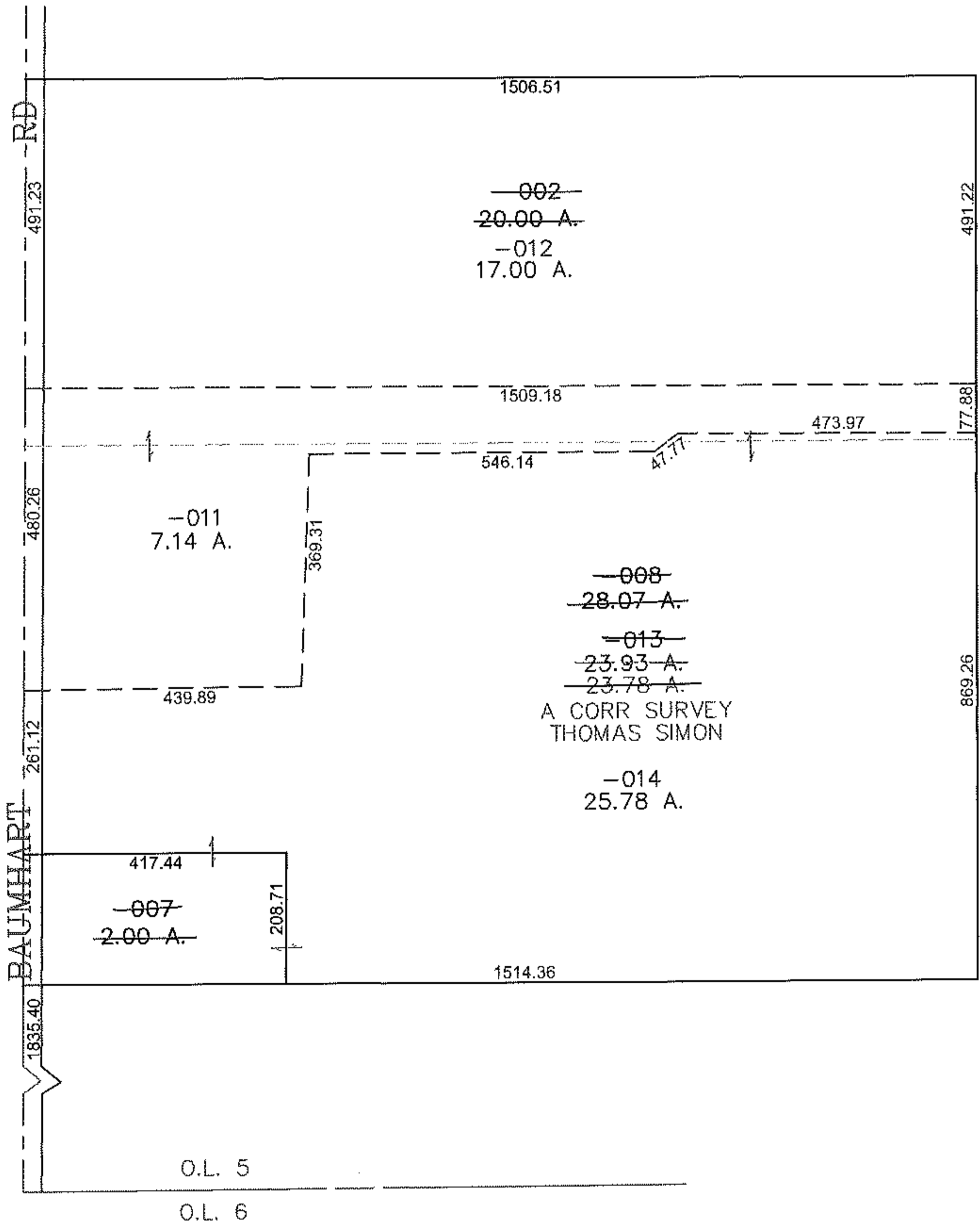
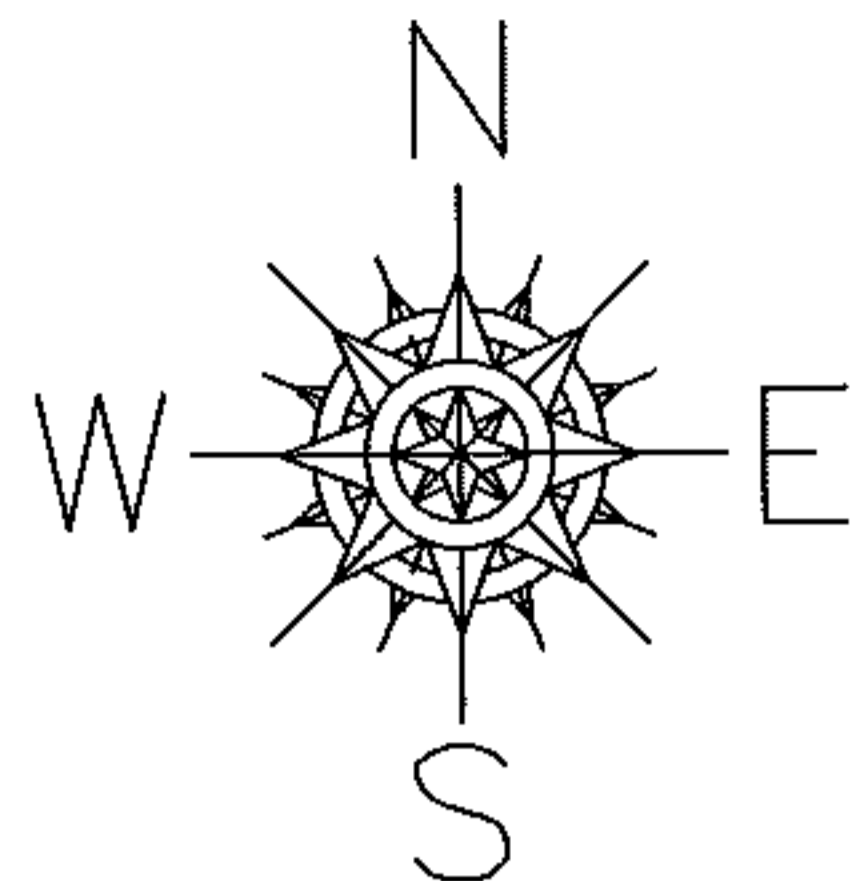


PARENT PARCEL: 08-15-005-000-008, -002, -007

CHILD PARCEL: 08-15-005-000-011 THRU -014

STARTING POINT: CENTERLINE OF BAUMHART RD & O.L. 5

10-02807



SPLITS/DEEDS PROCESSED
 LORAIN COUNTY TAX MAP DEPARTMENT
 226 MIDDLE AVE. ELYRIA, OHIO

SURVEYED BY: THOMAS SIMON
 CLOSURE: 0.00 : 10.000
 MAP PAGE(S): 8-D
 APPROVED BY: JAH DATE: 3-2-2010
 SCALE: 1" = 300 PRIOR INSTRUMENT: 20090317538