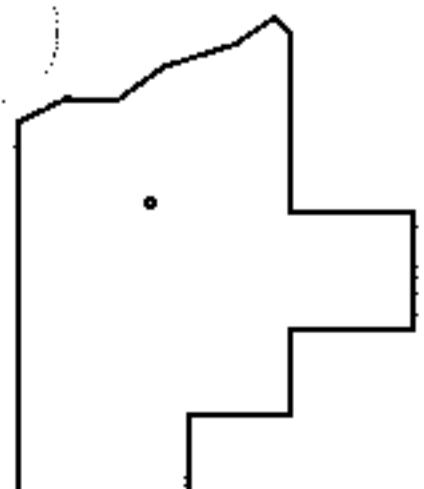
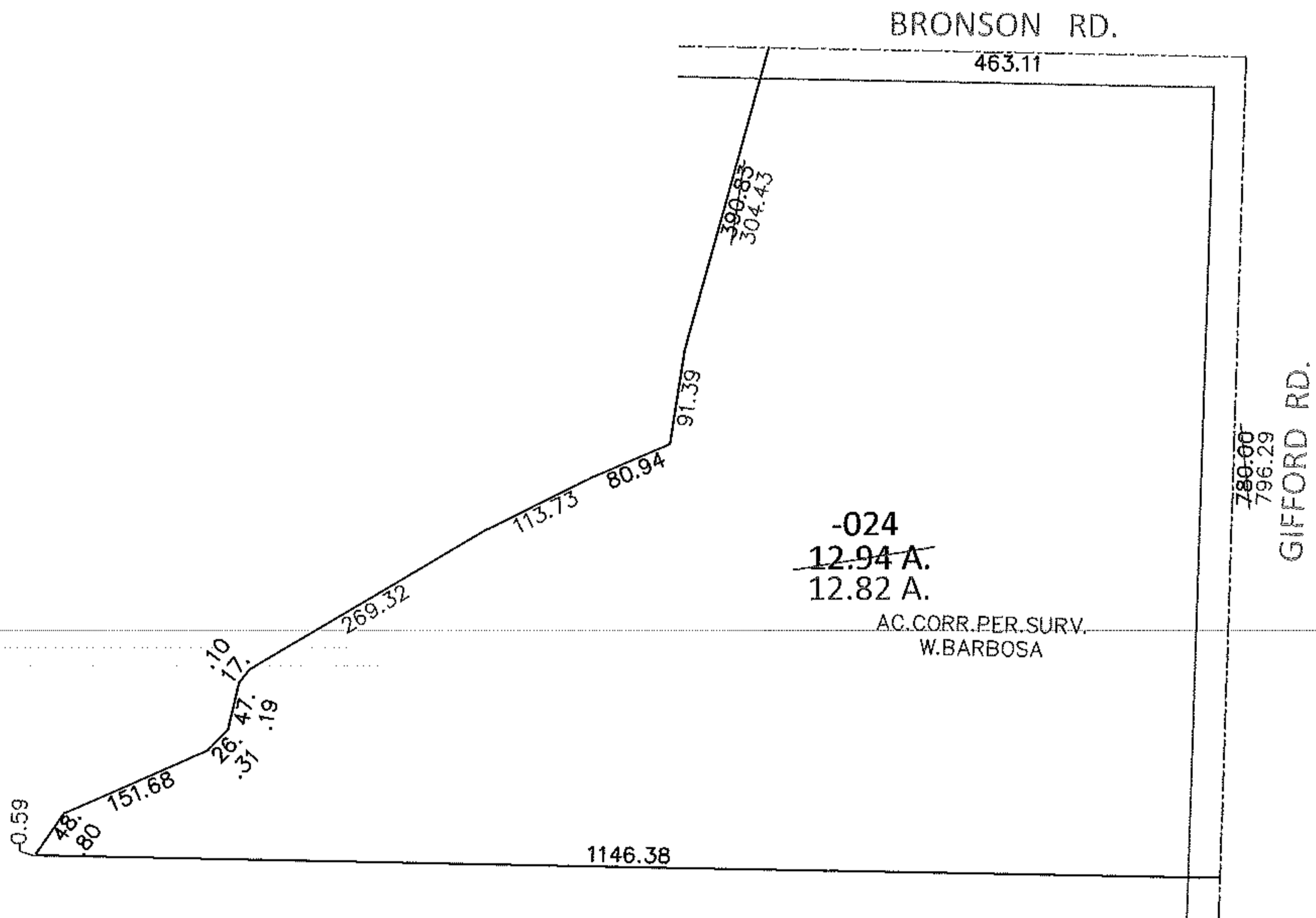
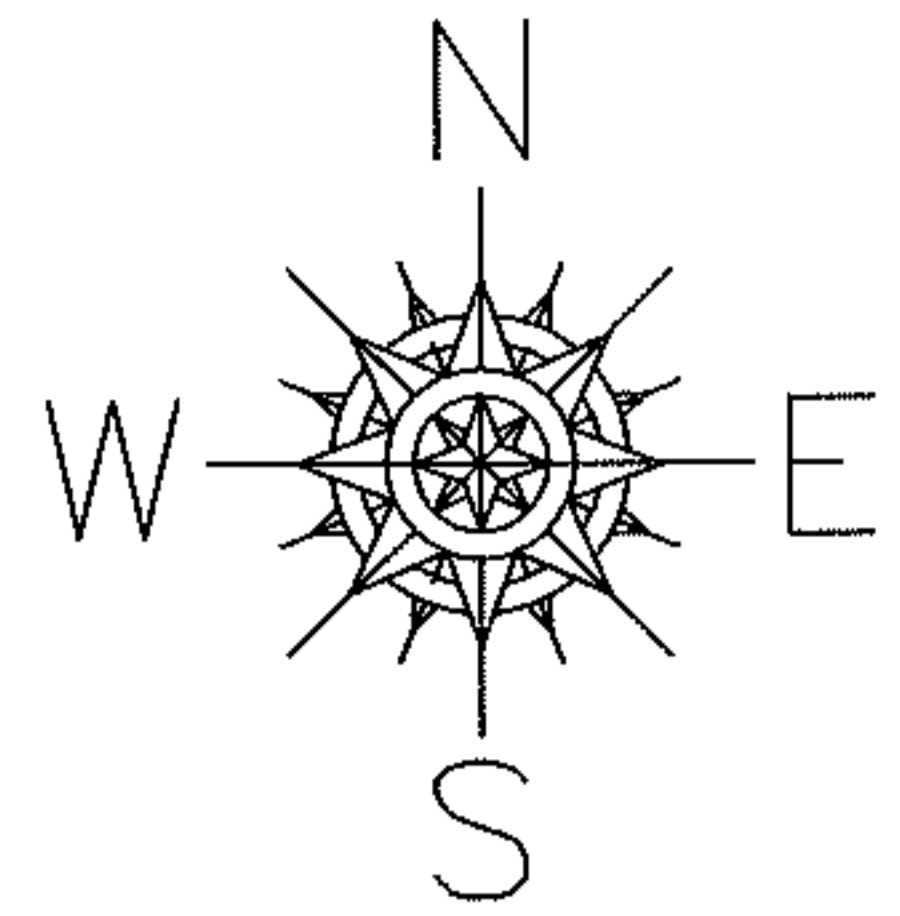


PARENT PARCEL: 13-09-024-000-024

CHILD PARCEL: _____

STARTING POINT: INTERSECTION OF C/L OF BRONSON RD. AND C/L OF GIFFORD RD.

13-02806-A



SPLITS/DEEDS PROCESSED

LORAIN COUNTY TAX MAP DEPARTMENT
226 MIDDLE AVE. ELYRIA, OHIO

SURVEYED BY: WILFREDO BARBOSA

CLOSURE: .01:10,000

MAP PAGE(S): 13-G

APPROVED BY: RRM DATE: 9-20-13

SCALE: 1" = 200 PRIOR INST.: 20130471783