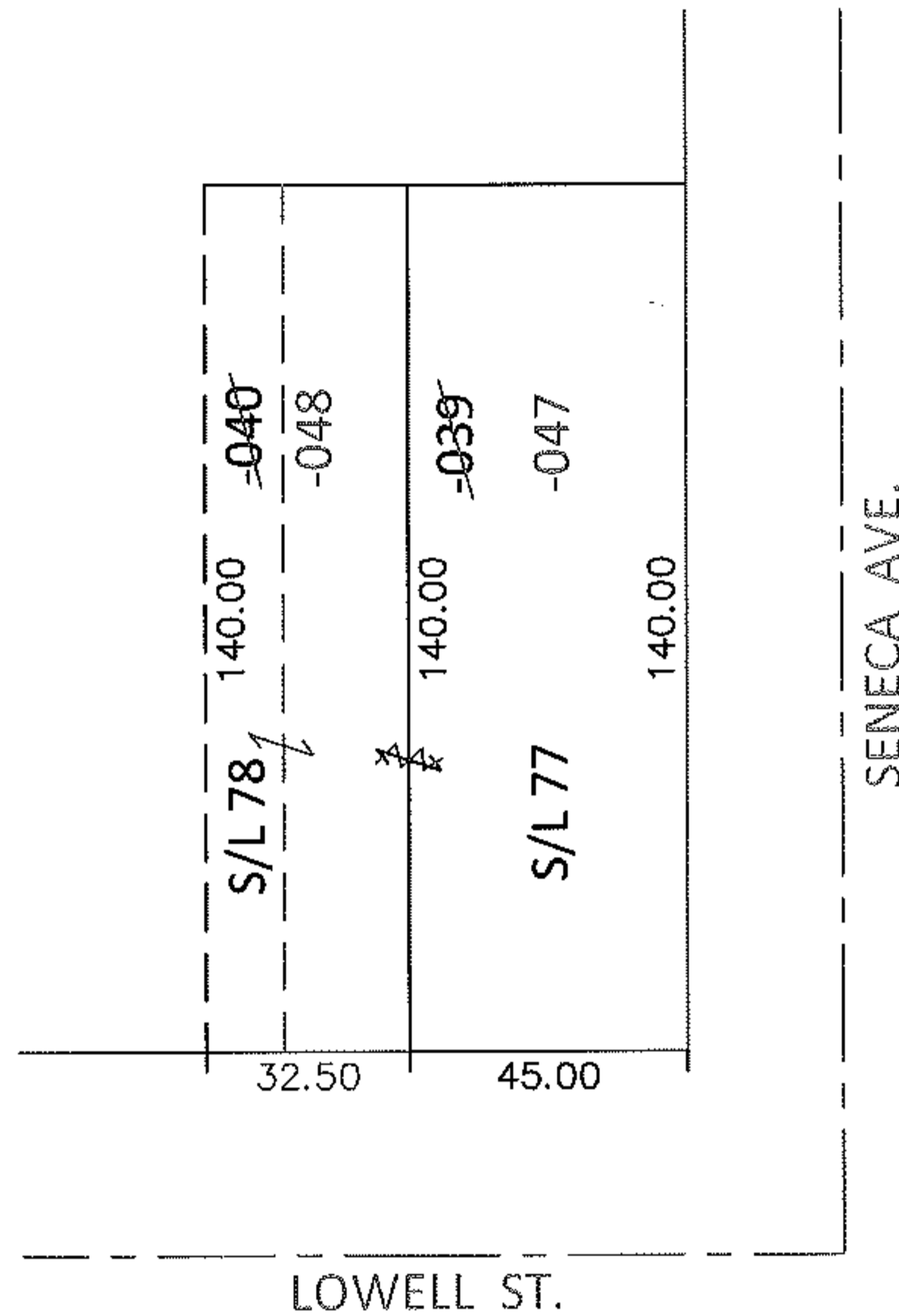
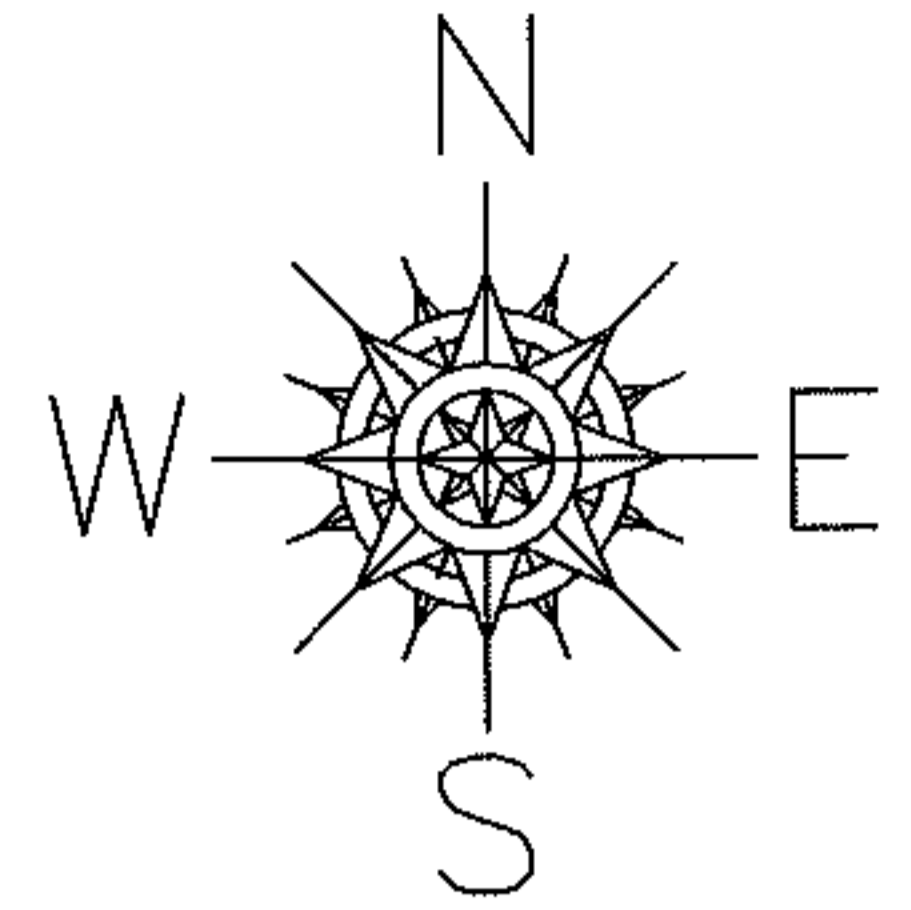


PARENT PARCEL: 06-24-026-115-039, -040

CHILD PARCEL: 06-24-026-115-047, -048

STARTING POINT: S/L 77 AND THE EAST 32.50 FT. OF S/L 78 IN J & C SCHAIBLE'S ALLOT. (VOL.8 PG.22)

13-02805-U

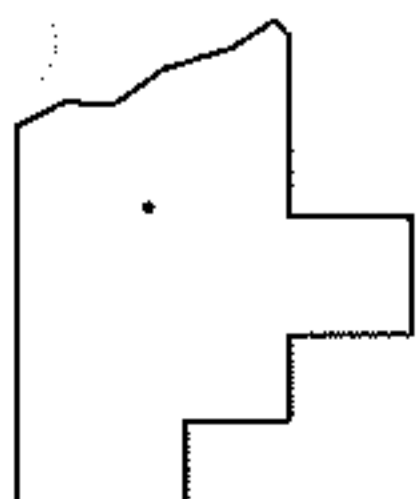


PARCEL RECONFIGURATION

06-24-026-115-039	06-24-026-115-040
65 X 140	12.50 X 140

06-24-026-115-047	06-24-026-115-048
45 X 140	32.50 X 140

PER PRIOR DEEDS
TO REMOVE UPDATE LEGAL



SPLITS/DEEDS PROCESSED

LORAIN COUNTY TAX MAP DEPARTMENT
226 MIDDLE AVE. ELYRIA, OHIO

SURVEYED BY: N/A

CLOSURE: N/A

MAP PAGE(S): 6-97

APPROVED BY: RRM DATE: 9-18-13

SCALE: 1" = 50' PRIOR INST.: 2013047798