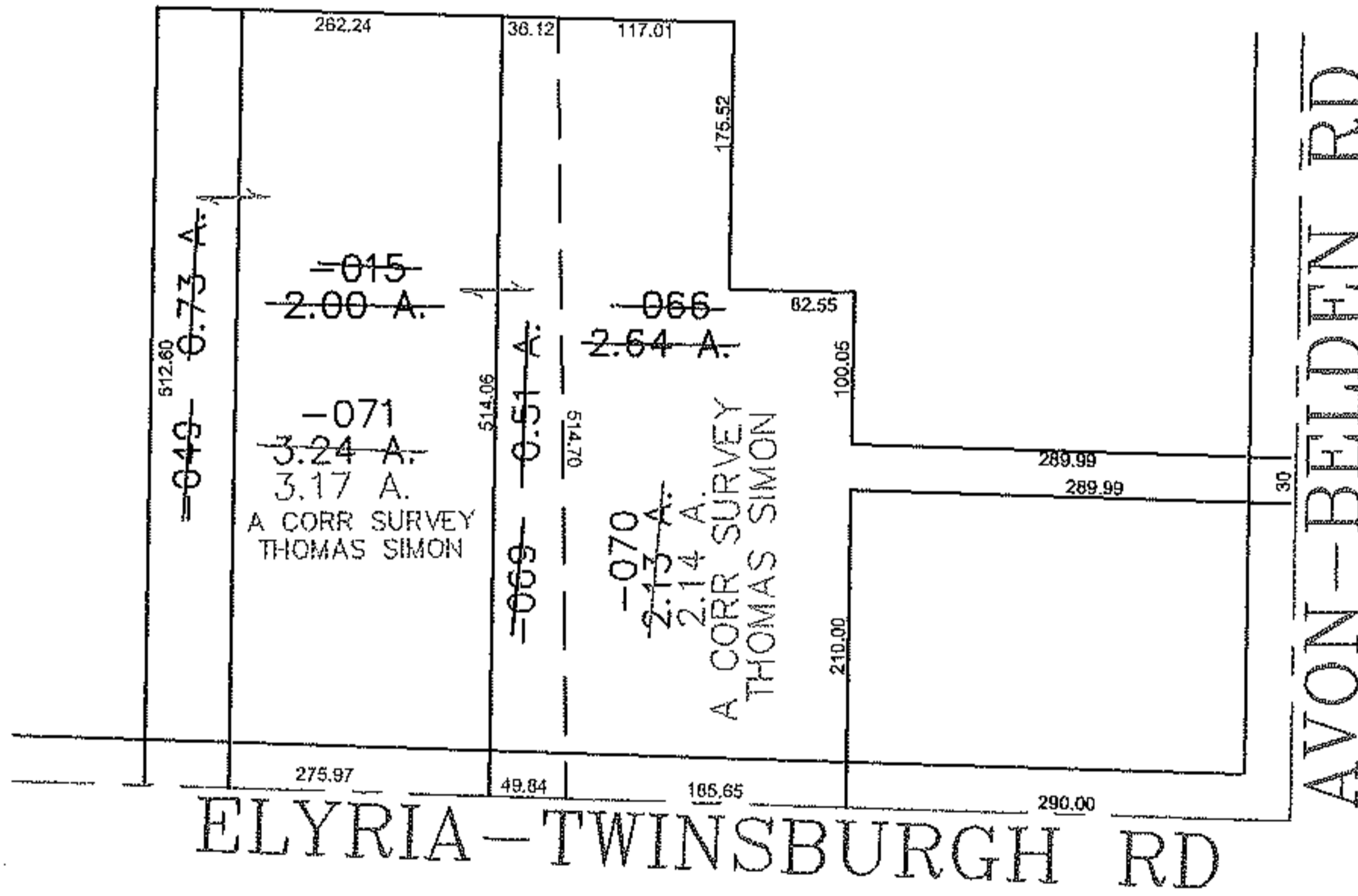
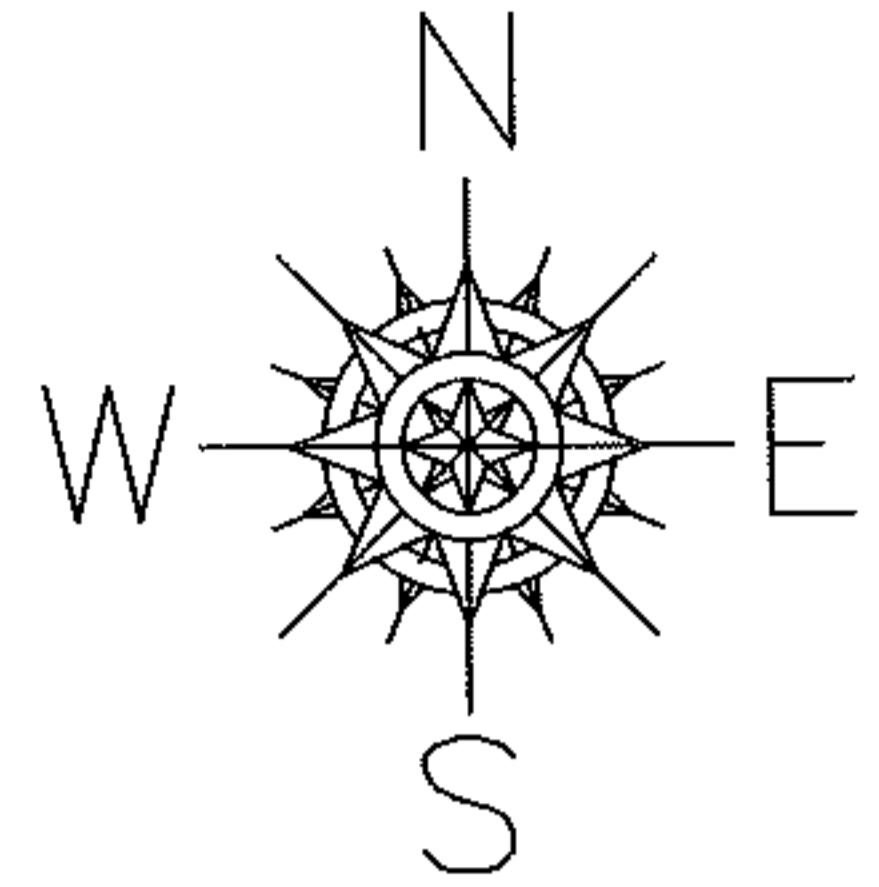


PARENT PARCEL: 11-00-055-000-066, -049, -015

CHILD PARCEL: 11-00-055-000-069 THRU -071

STARTING POINT: CENTERLINE OF ELYRIA-TWINSBURGH RD & AVON-BELDEN RD

10-02802



SPLITS/DEEDS PROCESSED
 LORAIN COUNTY TAX MAP DEPARTMENT
 226 MIDDLE AVE. ELYRIA, OHIO

SURVEYED BY: THOMAS SIMON
 CLOSURE: 0.00 : 10,000
 MAP PAGE(S): 11-00-055-B
 APPROVED BY: JAH DATE: 2-17-10
 SCALE: 1" = 200 PRIOR INSTRUMENT: 20000283678