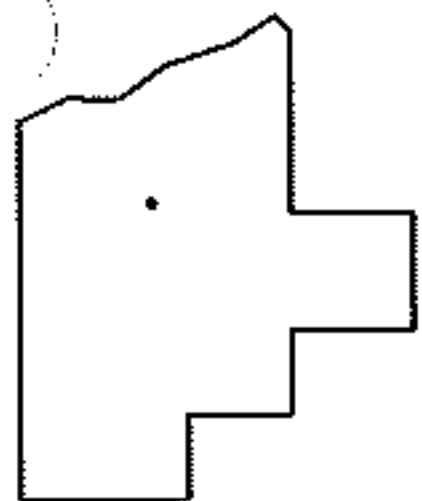
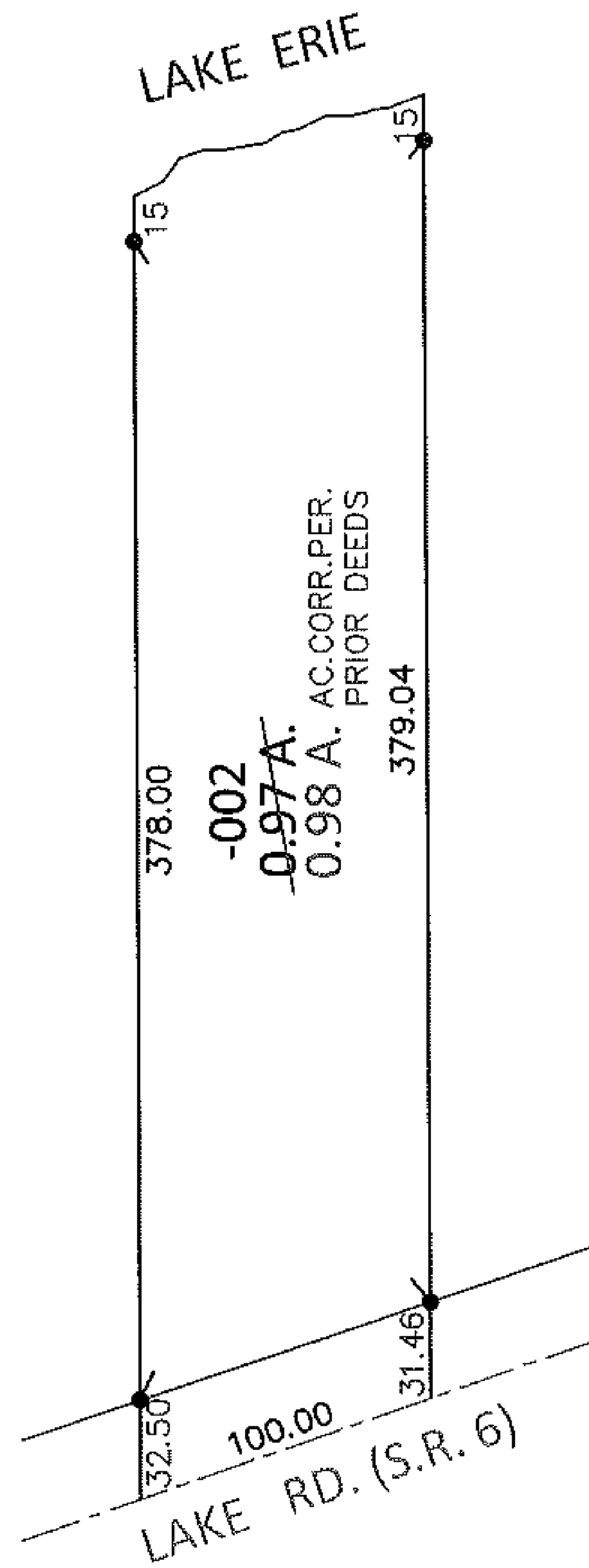
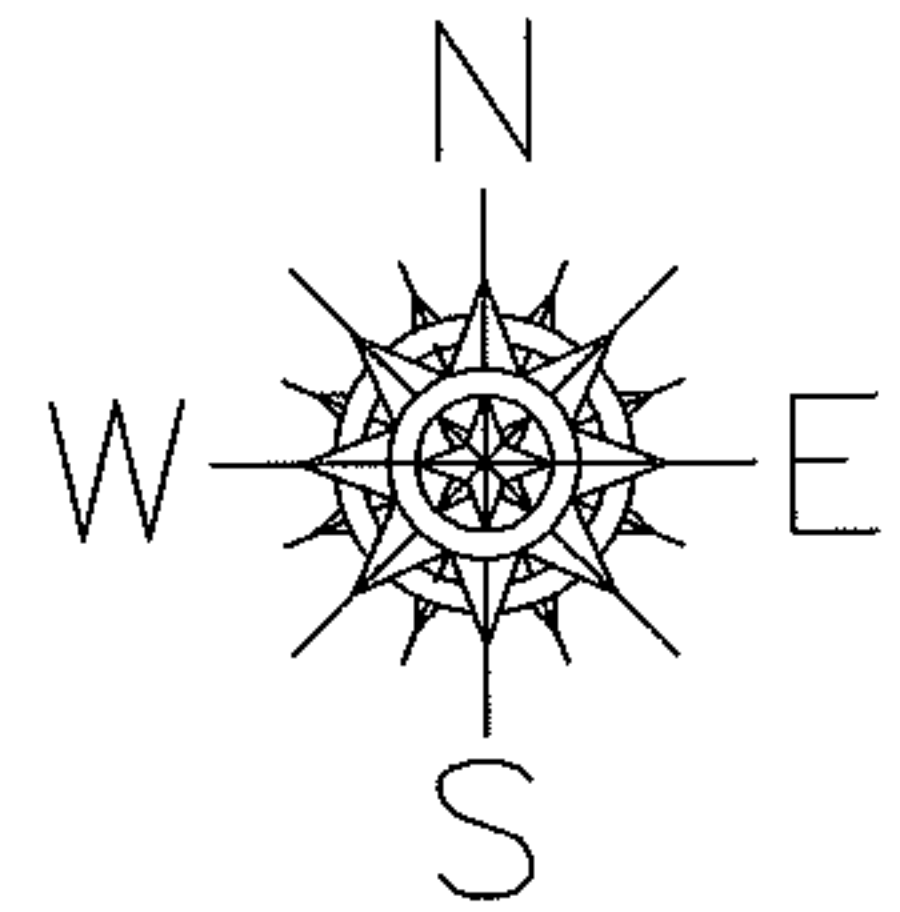


PARENT PARCEL: 03-00-035-101-002

CHILD PARCEL: _____

13-02800-A

STARTING POINT: SOUTHEAST CORNER OF LAND CONVEYED TO HAROLD A. STONE(DV 271/600)



SPLITS/DEEDS PROCESSED

LORAIN COUNTY TAX MAP DEPARTMENT
226 MIDDLE AVE. ELYRIA, OHIO

SURVEYED BY: N/A

CLOSURE: N/A

MAP PAGE(S): 3-00-035

APPROVED BY: RRM DATE: 9-16-13

SCALE: 1" = 100 PRIOR INST.: 20130478670