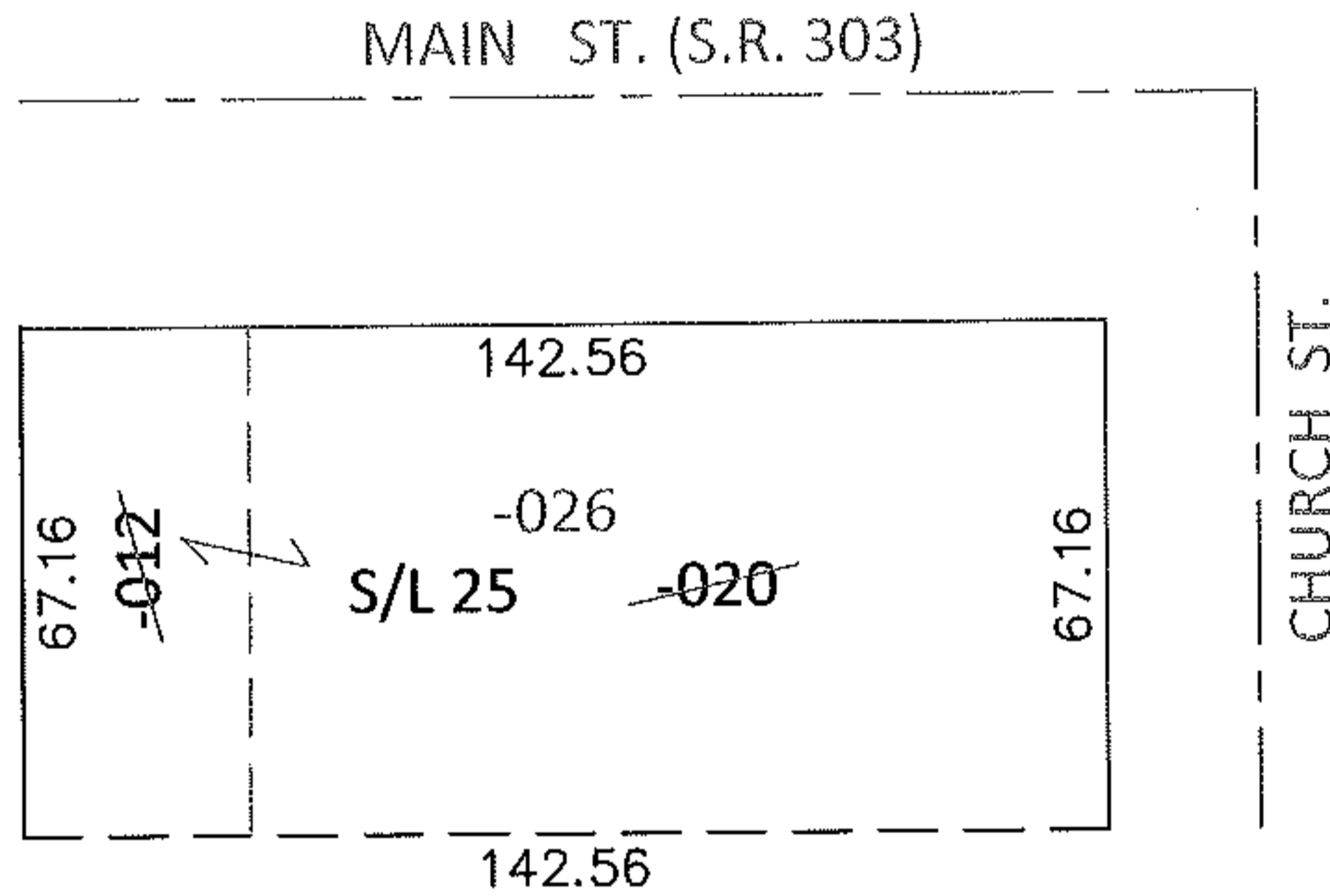
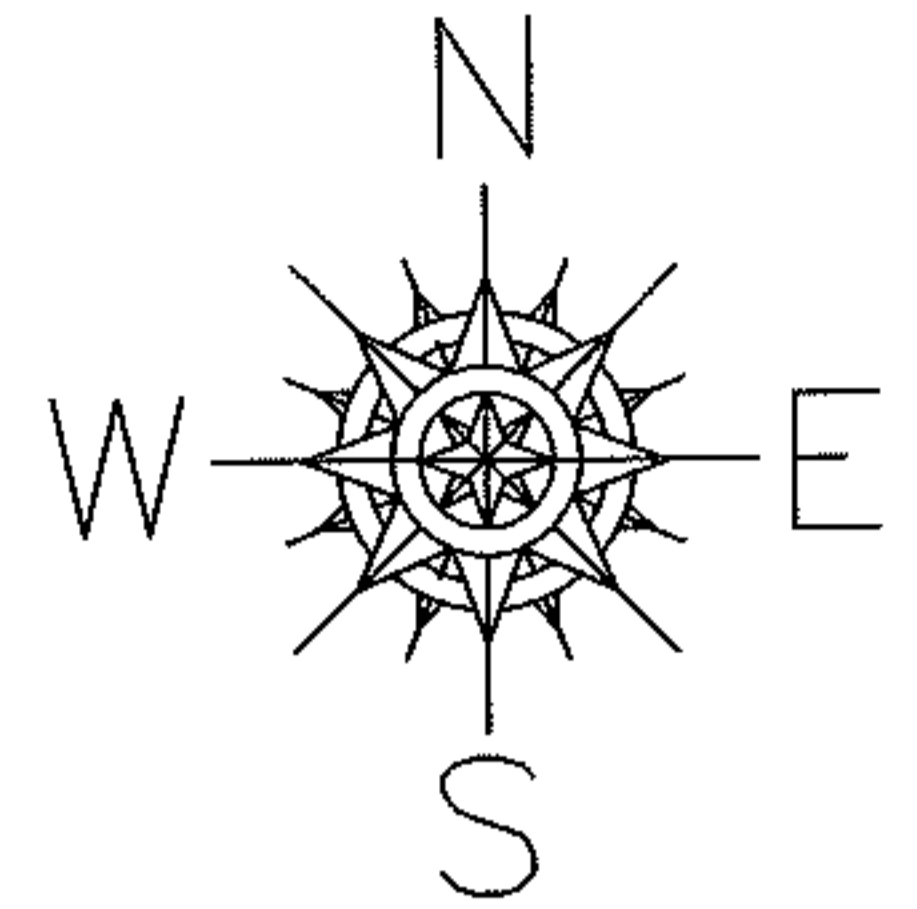


PARENT PARCEL: 15-00-055-101-012, -020

CHILD PARCEL: 15-00-055-101-026

STARTING POINT: PT OF S/L 25 IN LAGRANGE VILLAGE PLAT (VOL.1 PG.4)

13-02798-C

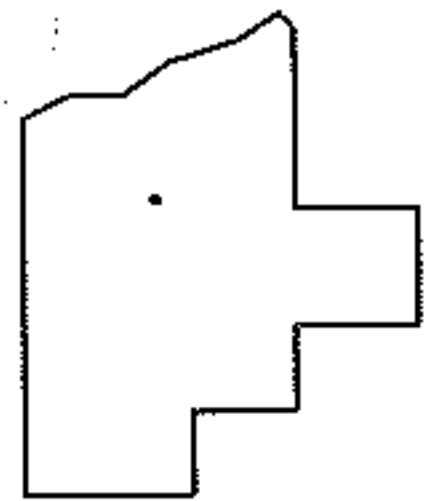


COMBINATION CORRECTION

15-00-055-101-012	15-00-055-101-020
0.11 A.	112 X 67.16

15-00-055-101-026
142.56 X 67.16

CORR. PER PRIOR DEEDS
TO REMOVE UPDATE LEGAL
FOR 1 LEGAL, 2 PARCEL NOS.



SPLITS/DEEDS PROCESSED

LORAIN COUNTY TAX MAP DEPARTMENT
226 MIDDLE AVE. ELYRIA, OHIO

SURVEYED BY:	<u>N/A</u>
CLOSURE:	<u>N/A</u>
MAP PAGE(S):	<u>15-00-055-A</u>
APPROVED BY:	<u>RRM</u> DATE: <u>9-13-13</u>
SCALE:	<u>1" = 50'</u> PRIOR INST.: <u>20130465636</u>