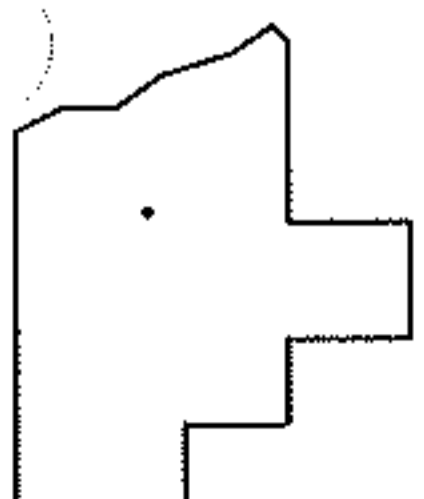
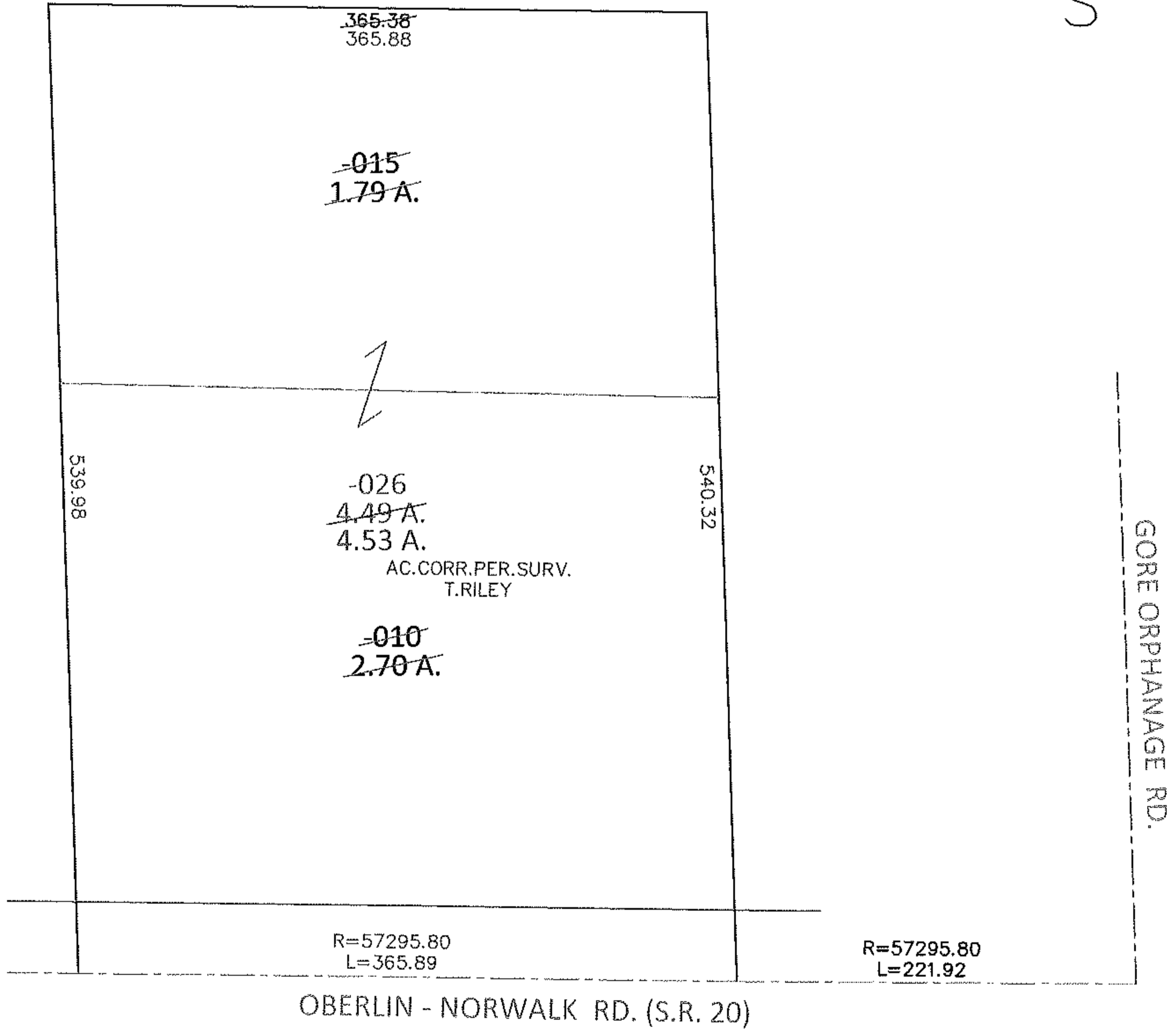
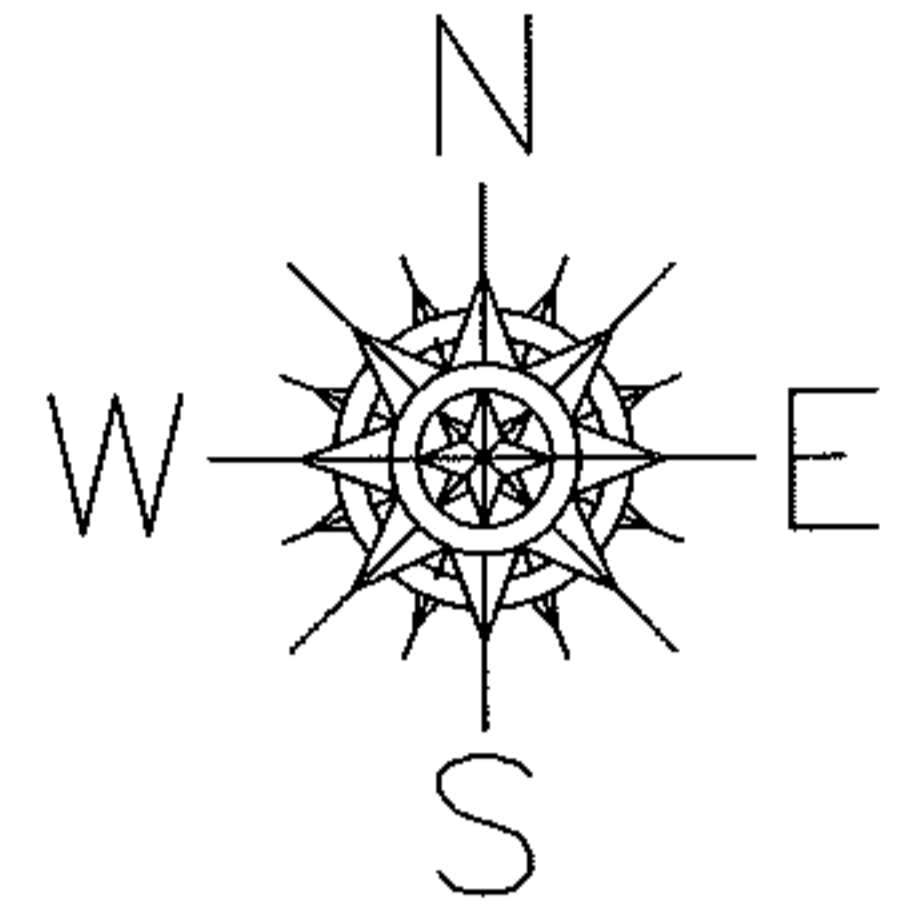


PARENT PARCEL: 13-11-021-000-010, -015

CHILD PARCEL: 13-11-021-000-026

13-02797-A

STARTING POINT: INTERSECTION OF C/L OF S.R. 20 AND C/L OF GORE ORPHANAGE RD.



**SPLITS/DEEDS PROCESSED**

LORAIN COUNTY TAX MAP DEPARTMENT  
226 MIDDLE AVE. ELYRIA, OHIO

SURVEYED BY: TIMOTHY O. RILEY

CLOSURE: .00:10,000

MAP PAGE(S): 13-A

APPROVED BY: RRM DATE: 9-12-13

SCALE: 1"= 100 PRIOR INST.: 20110363313