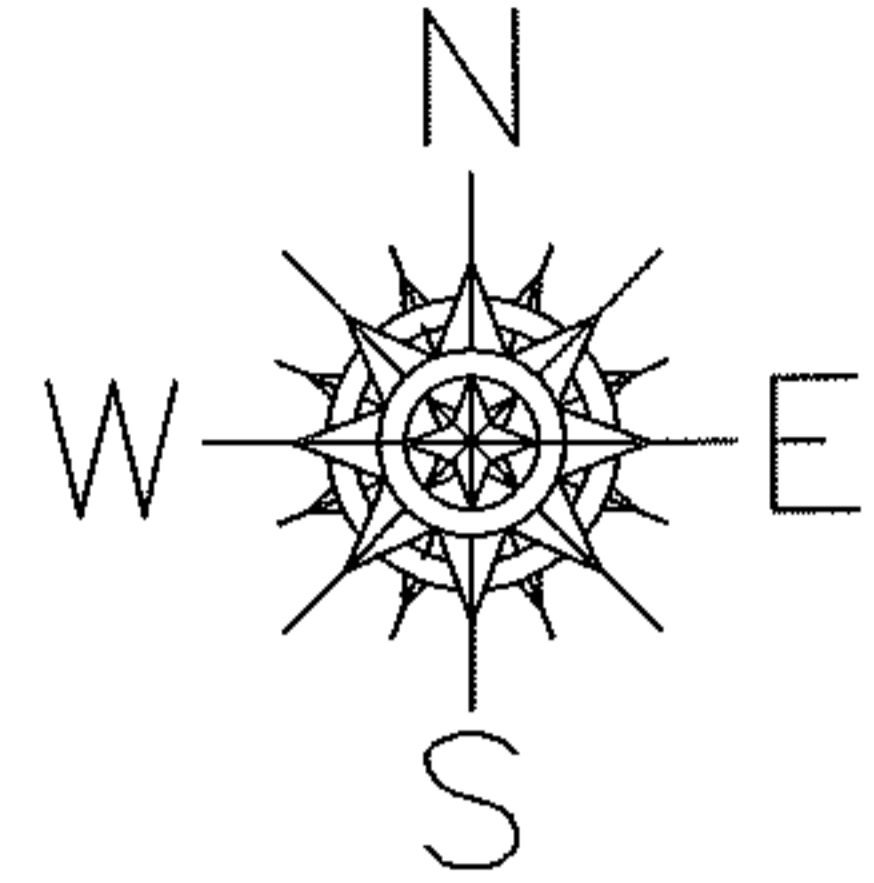
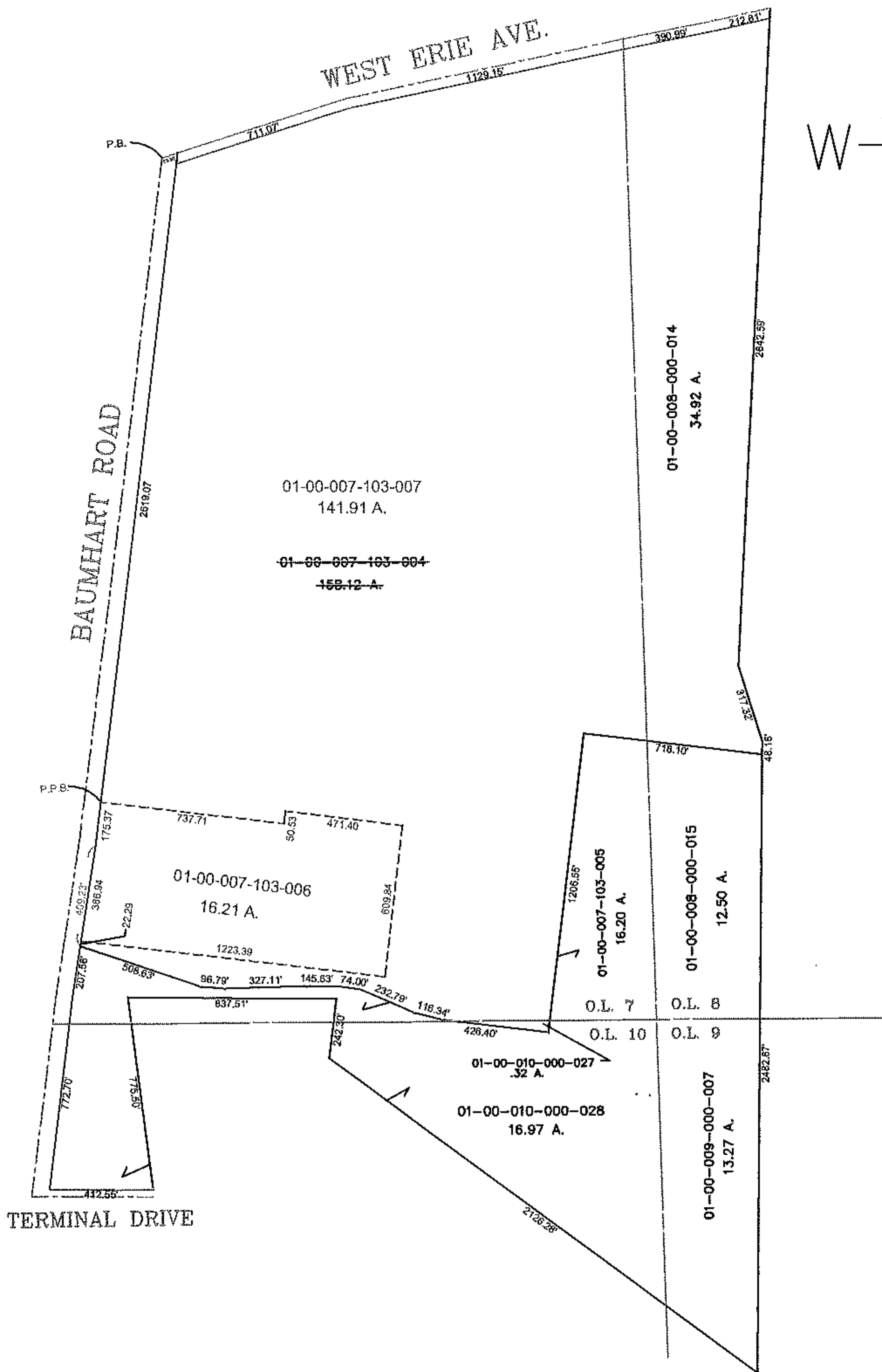


PARENT PARCEL: 01-00-007-103-004

CHILD PARCEL: 01-00-007-103-006 & -007

STARTING POINT: C/L INTERSECTION OF BAUMHART AND WEST ERIE AVE.

10-02796



SPLITS/DEEDS PROCESSED

LORAIN COUNTY TAX MAP DEPARTMENT
226 MIDDLE AVE. ELYRIA, OHIO

SURVEYED BY: JOHN R. ALBAN
 CLOSURE: 0.00:10000
 MAP PAGE(S): 01-D
 APPROVED BY: TJS DATE: 1/14/10
 SCALE: 1" = 700 PRIOR INSTRUMENT: 20090300043