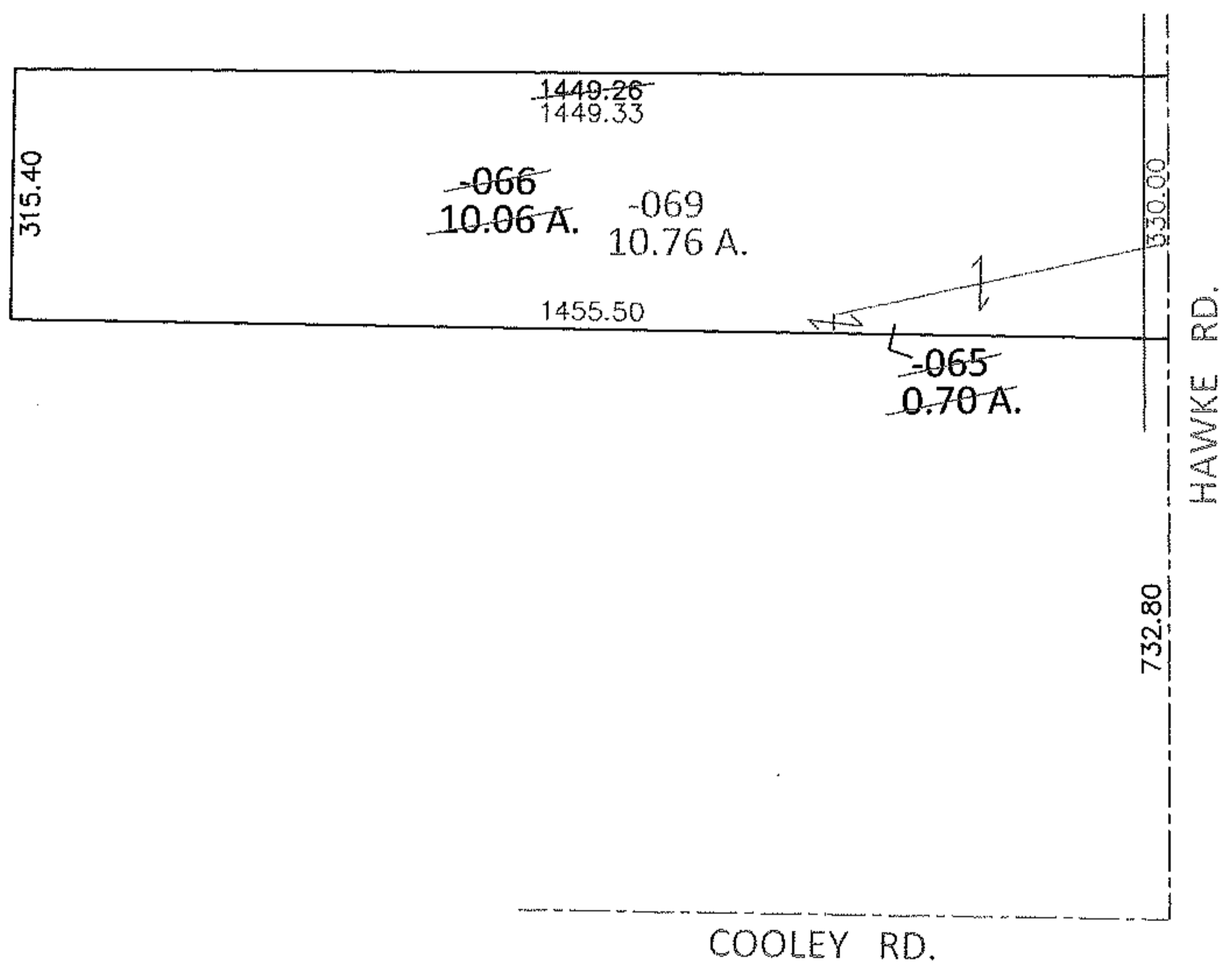
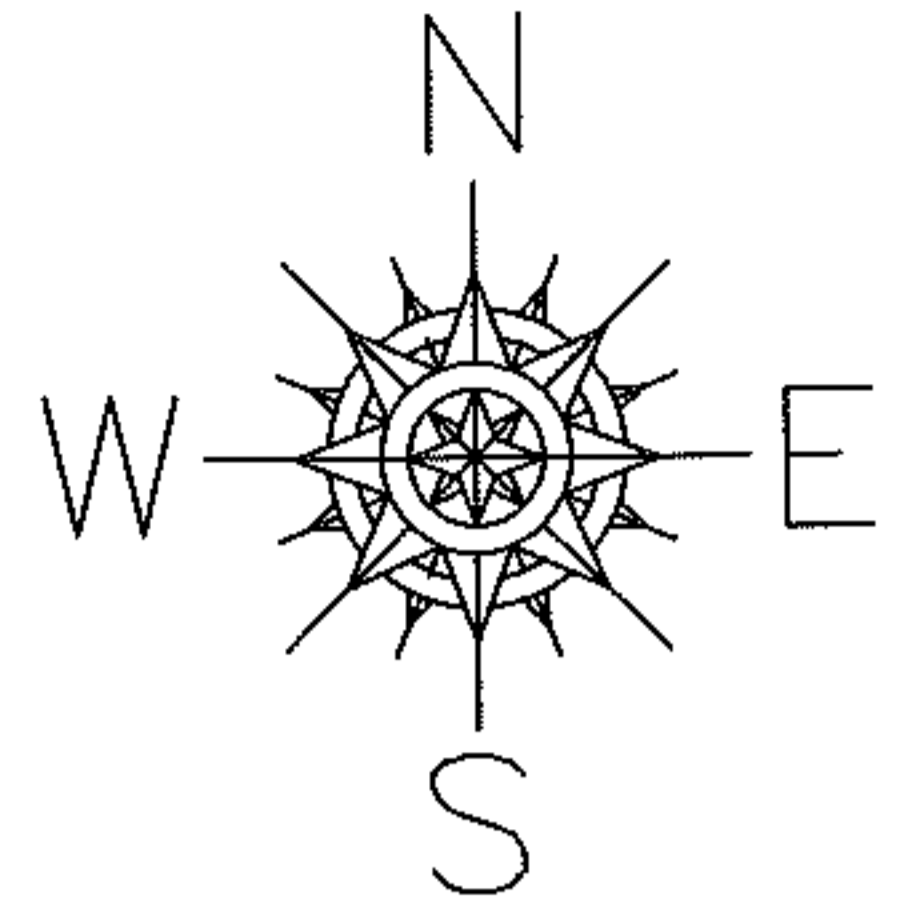
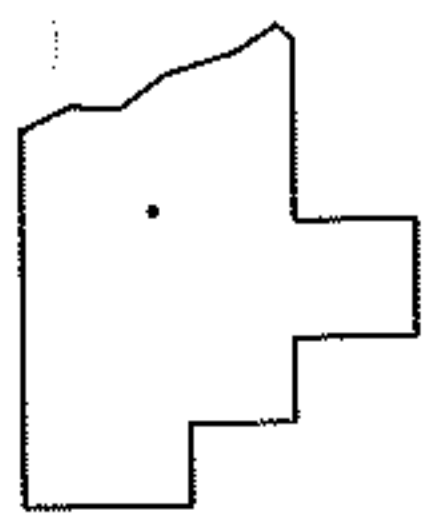


PARENT PARCEL: 11-00-008-000-065, -066  
CHILD PARCEL: 11-00-008-000-069  
STARTING POINT: INTERSECTION OF C/L OF COOLEY RD. AND C/L OF HAWKE RD.

**13-02794-C**



**COMBINATION CORRECTION**  
TO REMOVE UPDATE LEGAL  
FOR 2 PARCEL NOS., 1 LEGAL  
PER SURVEY BY WILFREDO BARBOSA



**SPLITS/DEEDS PROCESSED**  
LORAIN COUNTY TAX MAP DEPARTMENT  
226 MIDDLE AVE. ELYRIA, OHIO

SURVEYED BY: WILFREDO BARBOSA  
CLOSURE: .01:10,000  
MAP PAGE(S): 11-00-008-B  
APPROVED BY: RRM DATE: 9-10-13  
SCALE: 1"= 300 PRIOR INST.: 20130469913