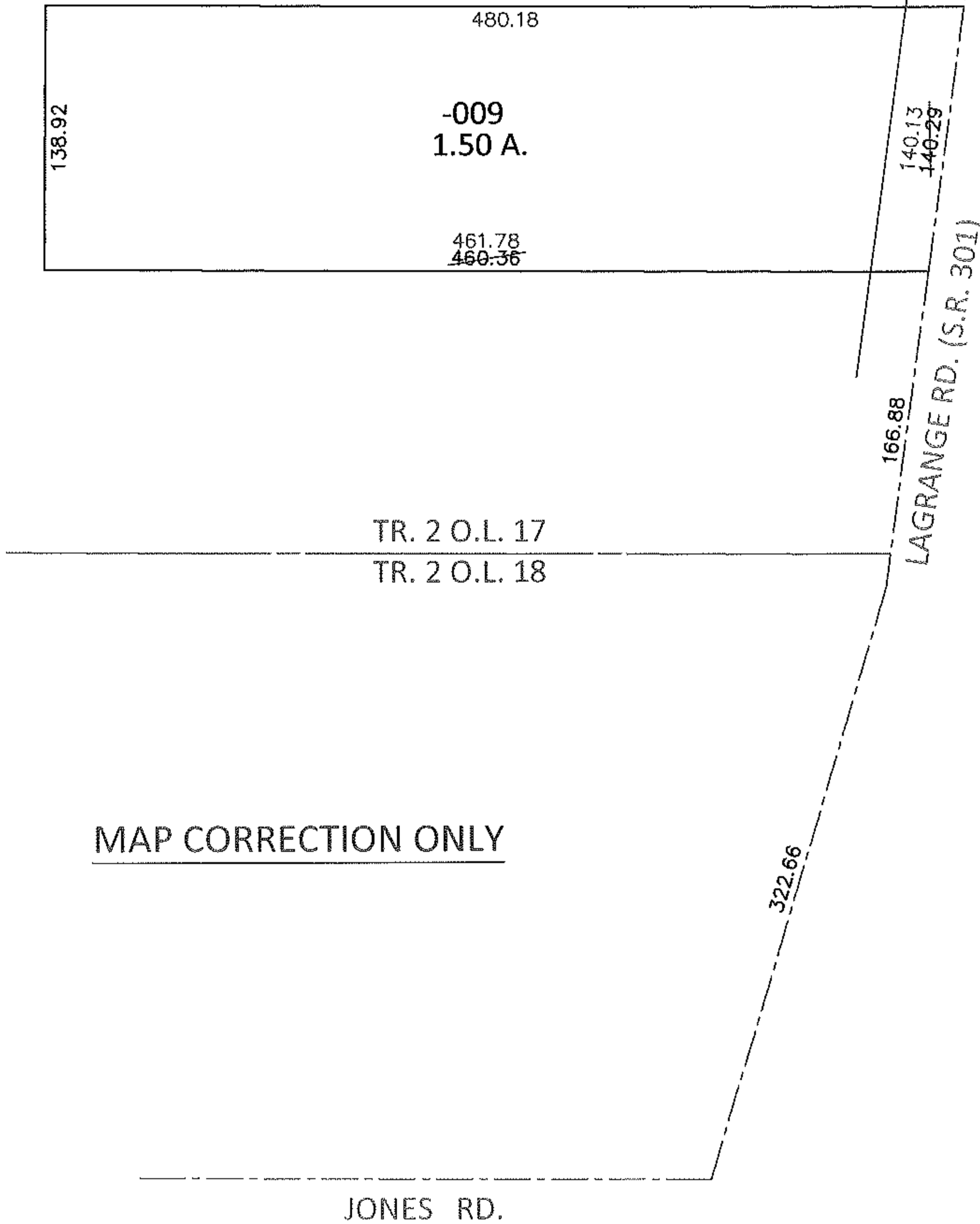
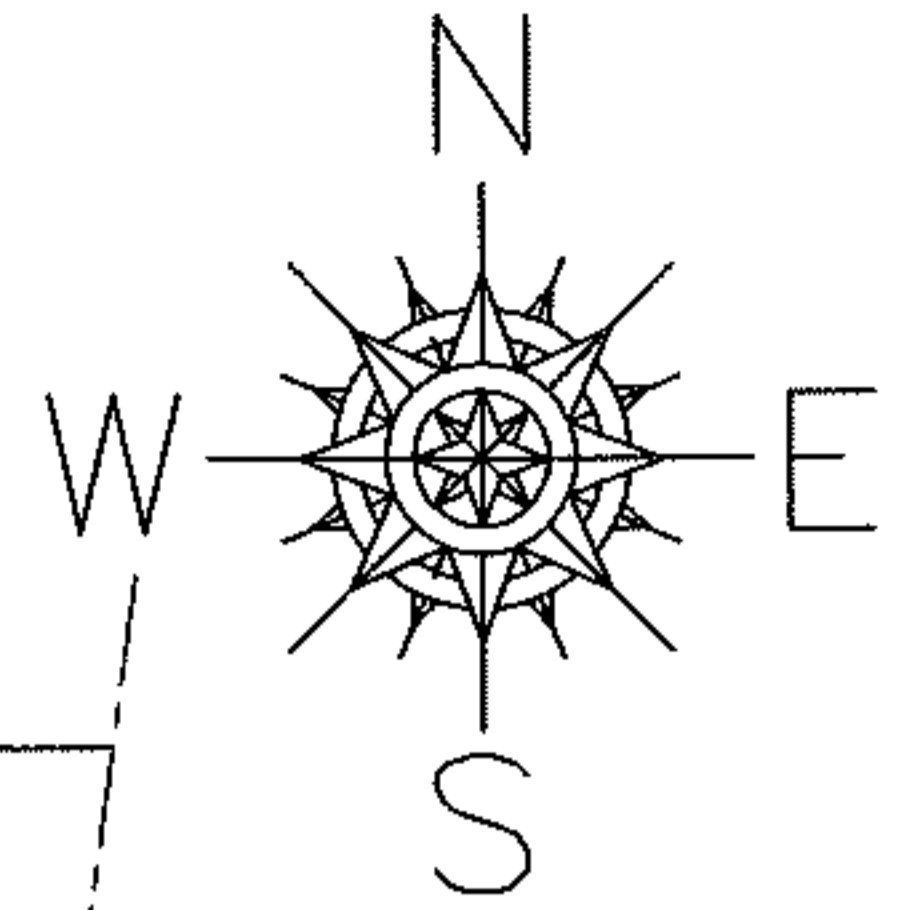


PARENT PARCEL: 19-02-017-000-009

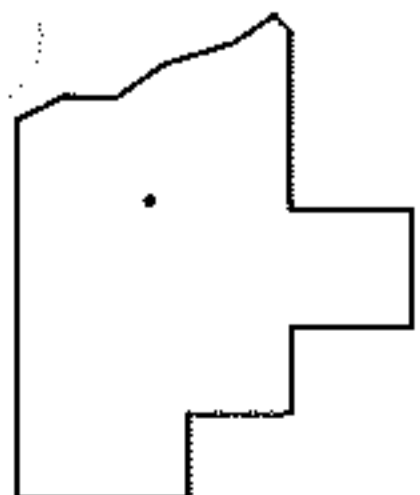
CHILD PARCEL: \_\_\_\_\_

13-02792-D

STARTING POINT: INTERSECTION OF C/L OF S.R.301 AND C/L OF JONES RD.



MAP CORRECTION ONLY



**SPLITS/DEEDS PROCESSED**

LORAIN COUNTY TAX MAP DEPARTMENT  
226 MIDDLE AVE. ELYRIA, OHIO

SURVEYED BY: AMY M. KELLY

CLOSURE: .01:10,000

MAP PAGE(S): 19-F

APPROVED BY: RRM DATE: 9-13-13

SCALE: 1"= 100 PRIOR INST.: 20130443395