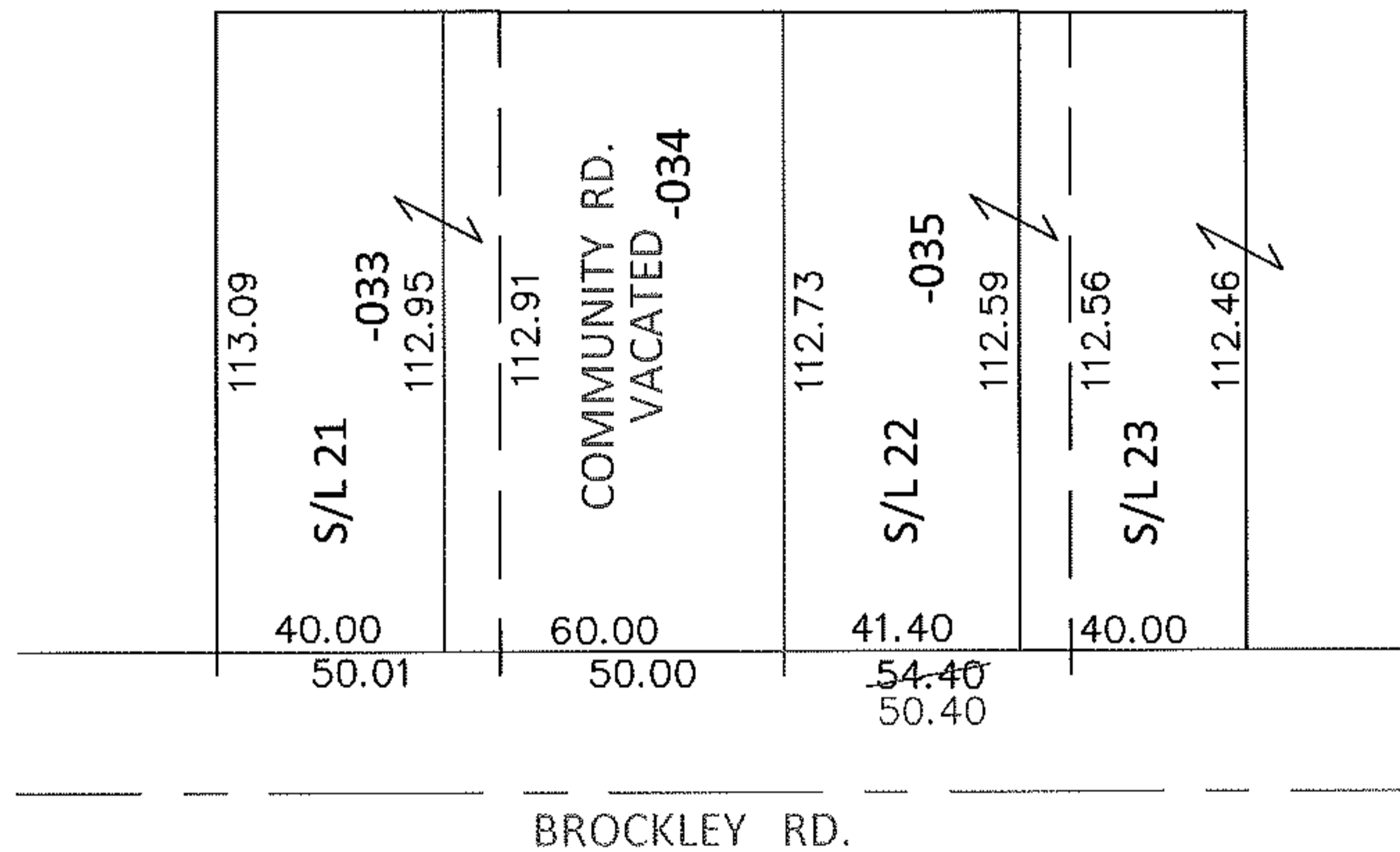
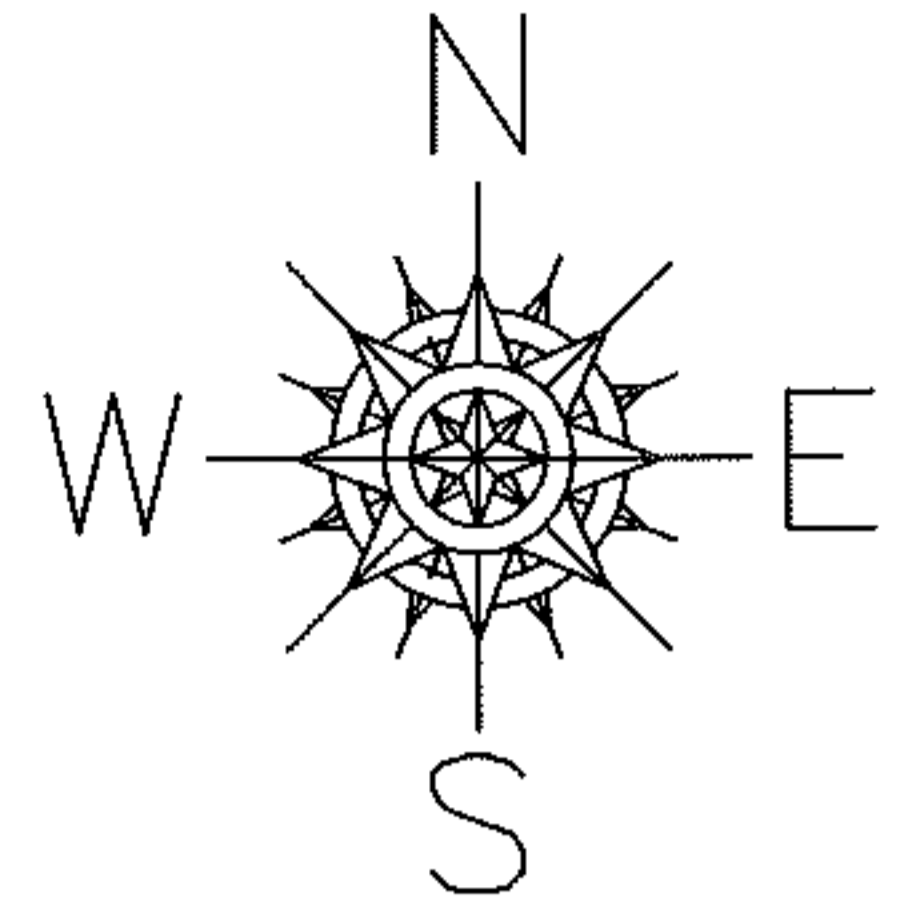


PARENT PARCEL: 03-00-029-103-035

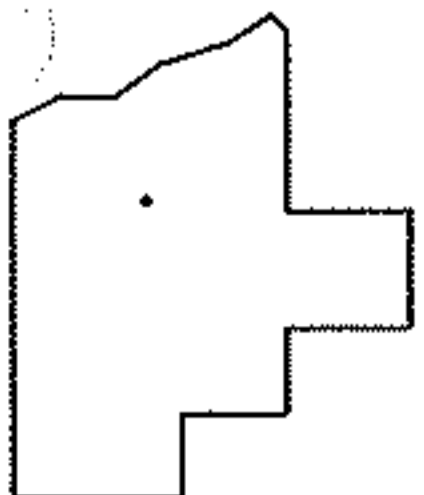
CHILD PARCEL: \_\_\_\_\_

13-02790-C

STARTING POINT: S/L'S 21 THRU 23 INKNICKERBOCKER SUB. NO.2 (VOL.12 PG.16)



MAP CORRECTION ONLY



**SPLITS/DEEDS PROCESSED**

LORAIN COUNTY TAX MAP DEPARTMENT  
226 MIDDLE AVE. ELYRIA, OHIO

SURVEYED BY: N/A

CLOSURE: N/A

MAP PAGE(S): 3-00-029-A

APPROVED BY: RRM DATE: 8-27-13

SCALE: 1"= 50' PRIOR INST.: OR 852/239