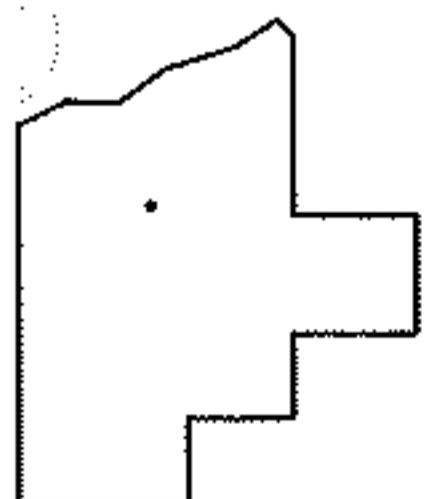
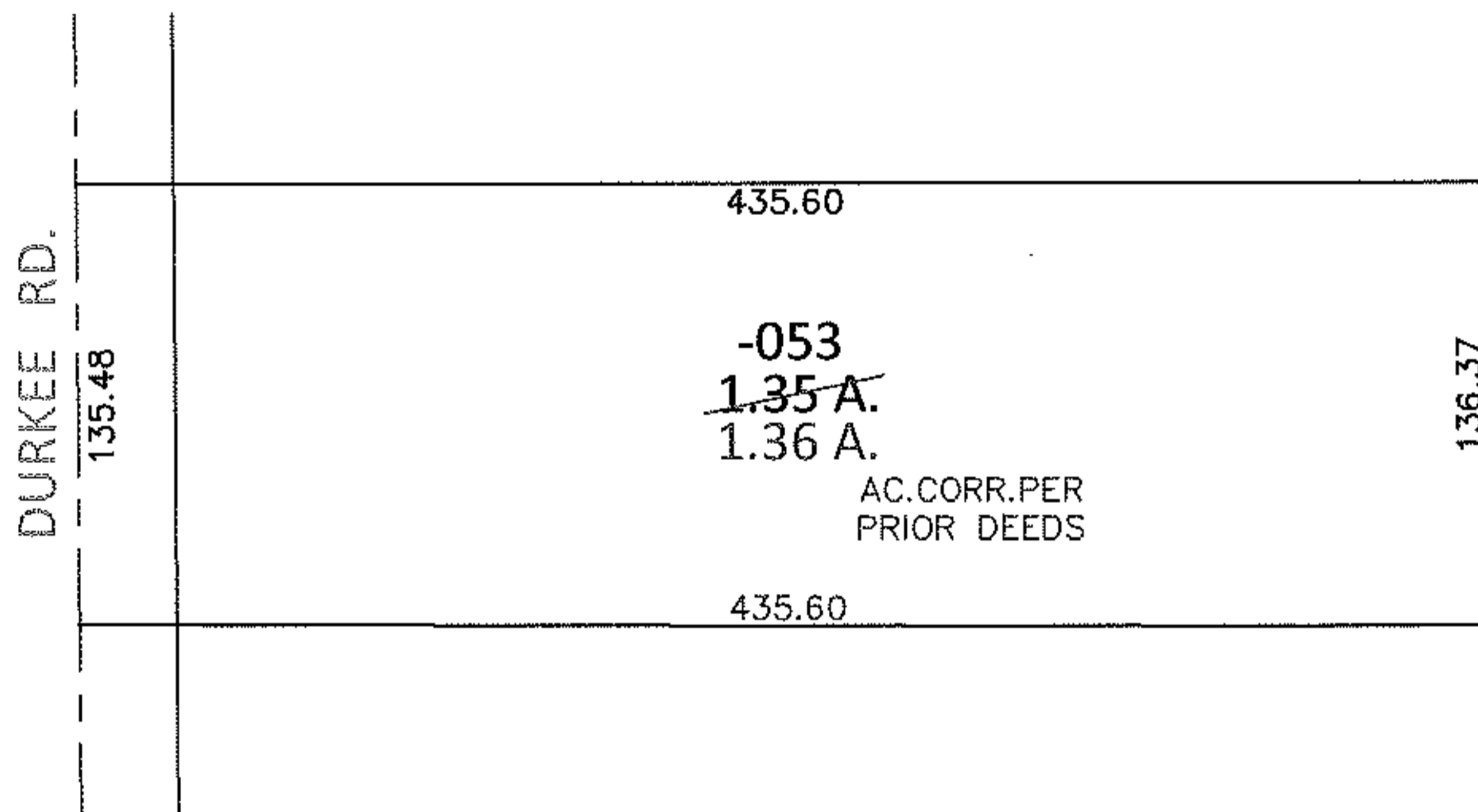
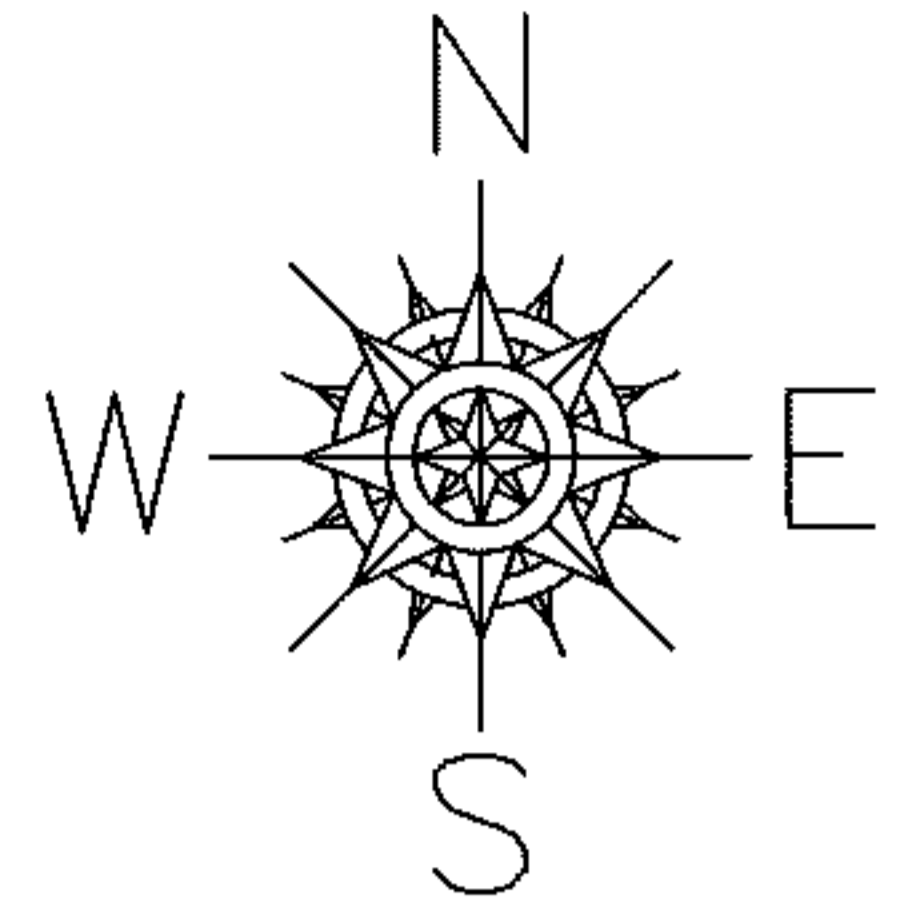


PARENT PARCEL: 11-00-074-000-053

CHILD PARCEL: _____

13-02786-A

STARTING POINT: SOUTHWEST CORNER OF LAND CONVEYED TO SYLVIA LORTZ (DV 1360/86)



SPLITS/DEEDS PROCESSED

LORAIN COUNTY TAX MAP DEPARTMENT
226 MIDDLE AVE. ELYRIA, OHIO

SURVEYED BY: N/A

CLOSURE: N/A

MAP PAGE(S): 11-00-074-A

APPROVED BY: RRM DATE: 8-21-13

SCALE: 1"= 100 PRIOR INST.: 20130473073