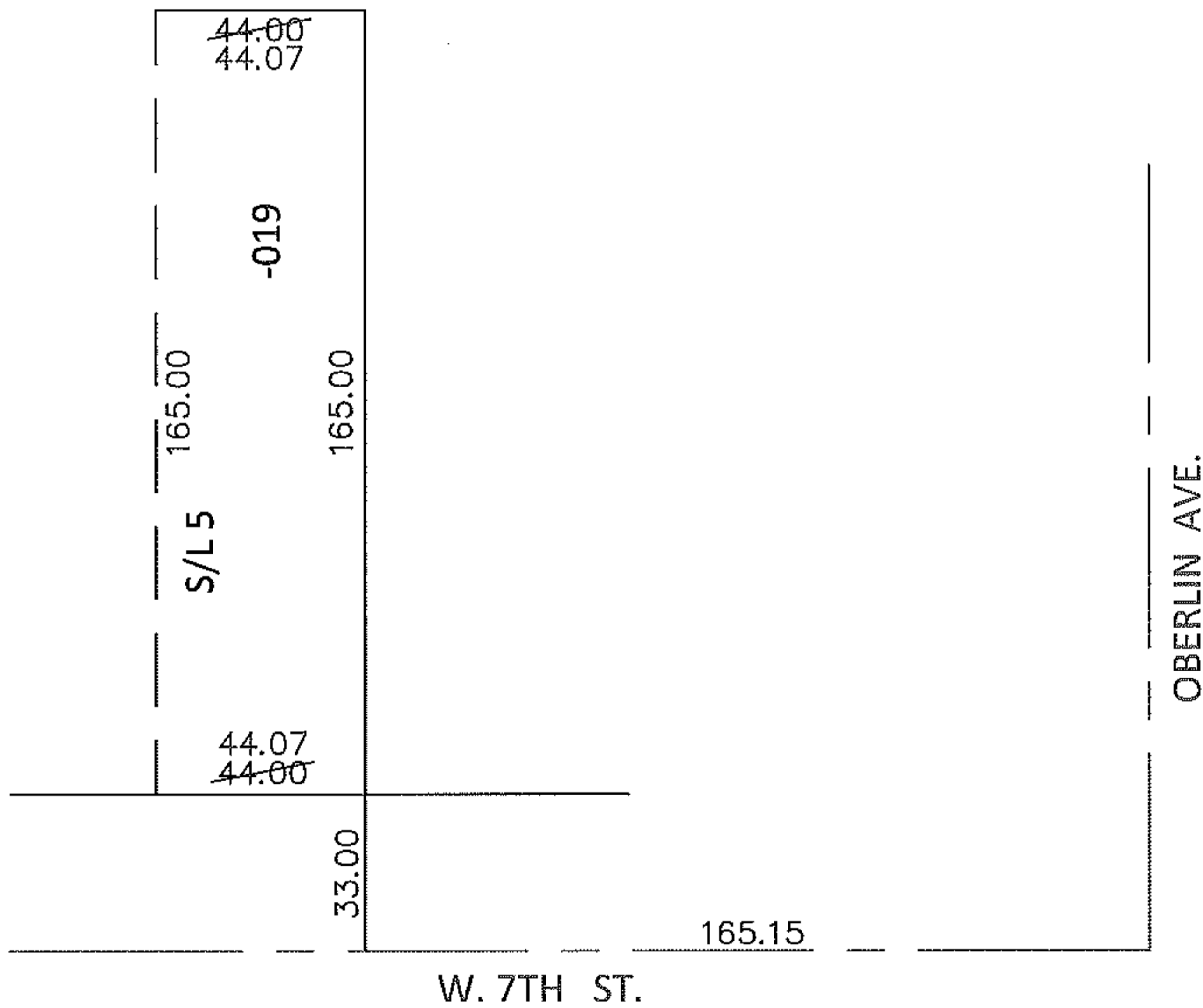
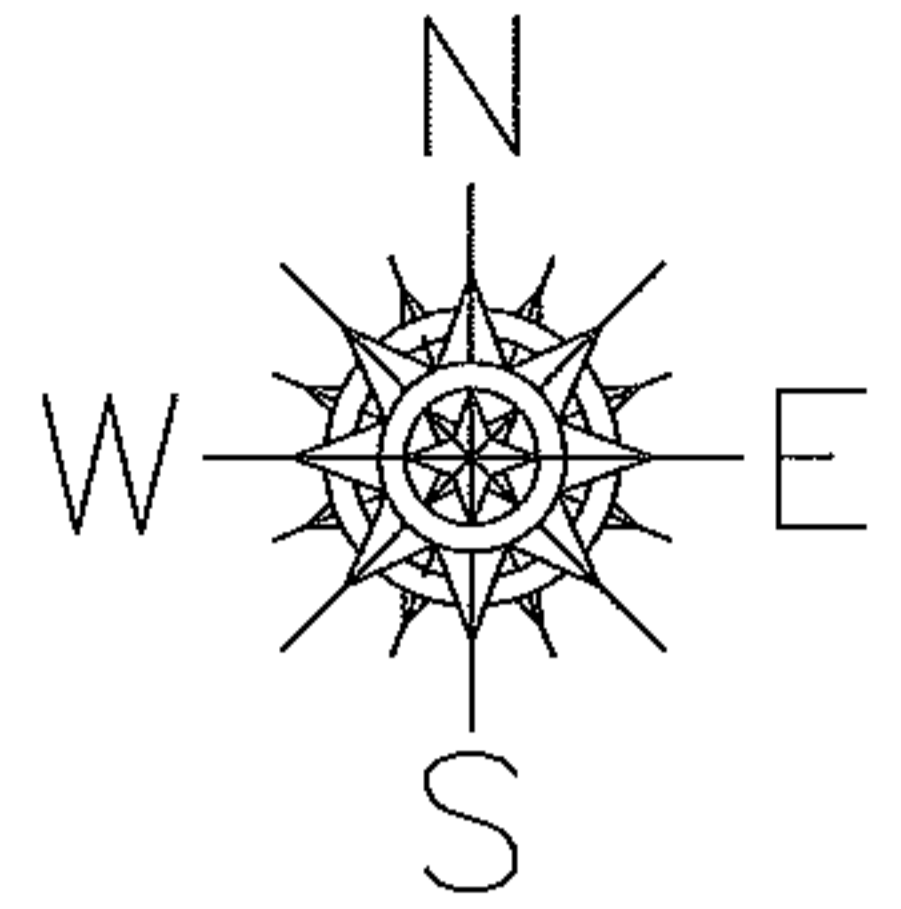


PARENT PARCEL: 02-02-026-110-019

13-02785-D

CHILD PARCEL: _____

STARTING POINT: INTERSECTION OF C/L OF W.7TH ST. AND C/L OF OBERLIN AVE.



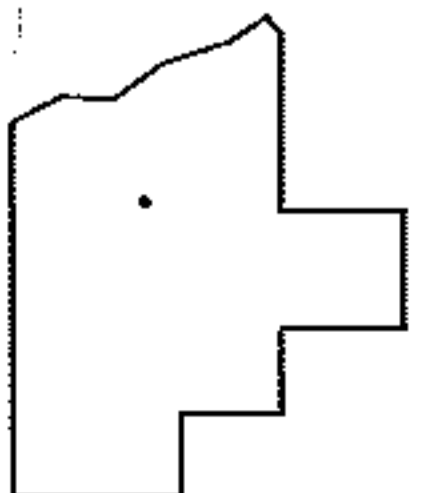
FRONTAGE CORRECTION

02-02-026-110-019

44.07

~~44~~ X 165

PER SURV. B.ANDERSON



SPLITS/DEEDS PROCESSED

LORAIN COUNTY TAX MAP DEPARTMENT
226 MIDDLE AVE. ELYRIA, OHIO

SURVEYED BY: BRENT D.ANDERSON

CLOSURE: .00:10,000

MAP PAGE(S): 2-02-026-B

APPROVED BY: RRM DATE: 8-22-13

SCALE: 1" = 50' PRIOR INST.: 20130446131