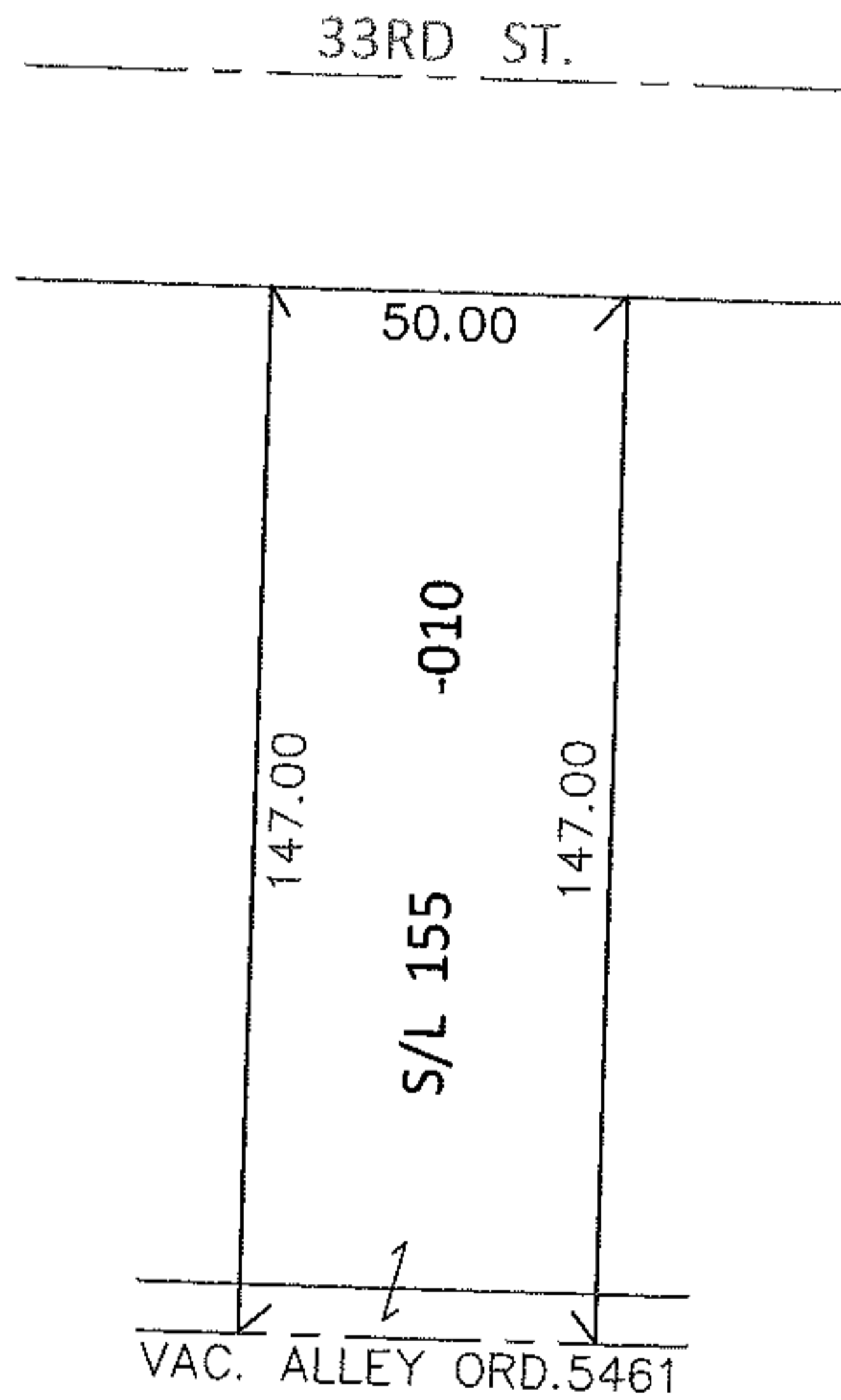
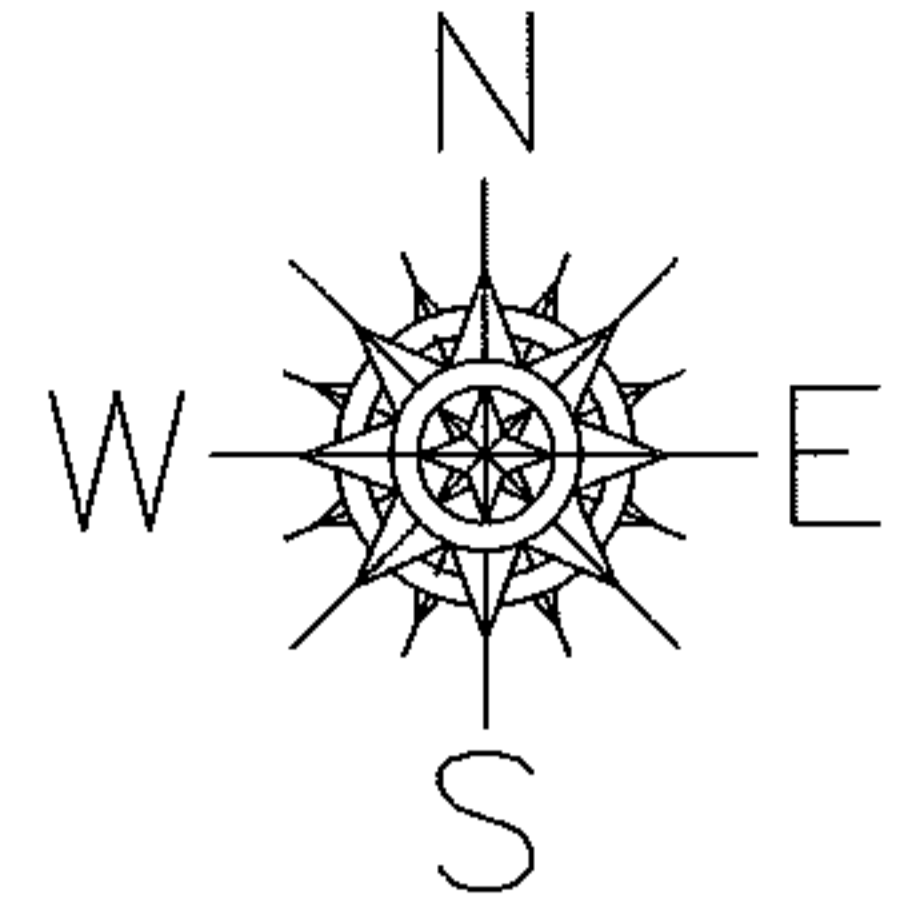


PARENT PARCEL: 03-00-098-127-010

CHILD PARCEL: \_\_\_\_\_

STARTING POINT: S/L 155 IN HIGHLAND ADD. (VOL.4 PG.36)

13-02783-C

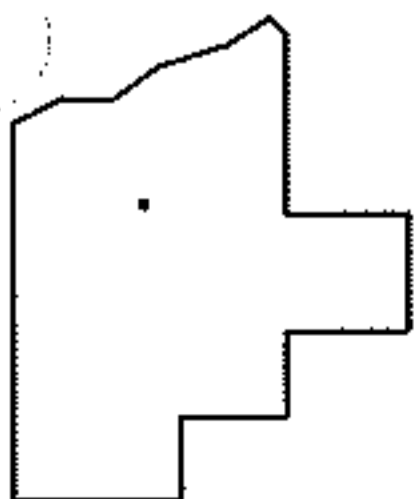


DEPTH CORRECTION

03-00-098-127-010

147  
50 X ~~140~~

PER DEEDS & VAC.ORD. 5461



SPLITS/DEEDS PROCESSED

LORAIN COUNTY TAX MAP DEPARTMENT  
226 MIDDLE AVE. ELYRIA, OHIO

SURVEYED BY: N/A

CLOSURE: N/A

MAP PAGE(S): 3-00-098-A

APPROVED BY: RRM DATE: 8-19-13

SCALE: 1"= 50' PRIOR INST.: 20130473867