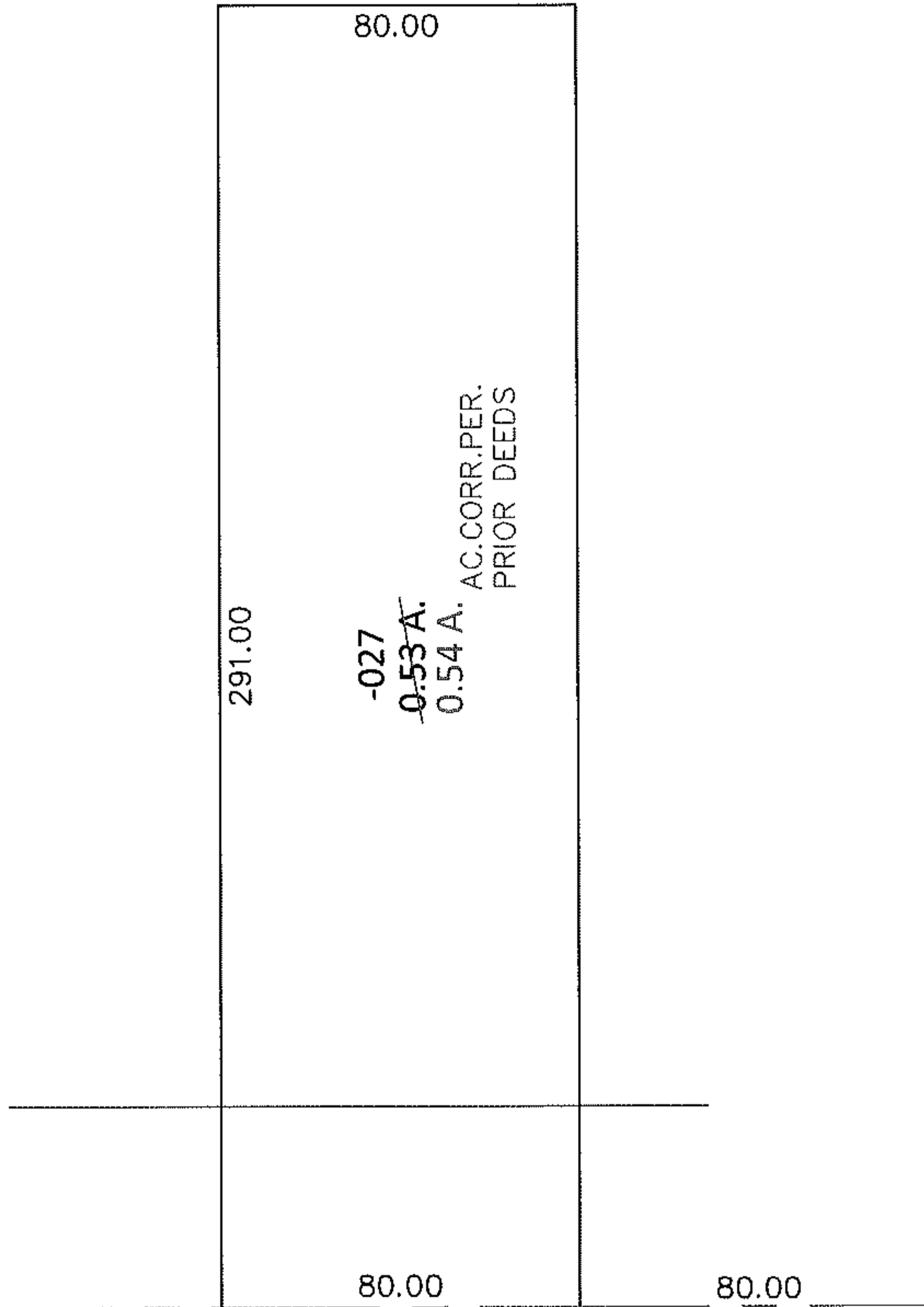
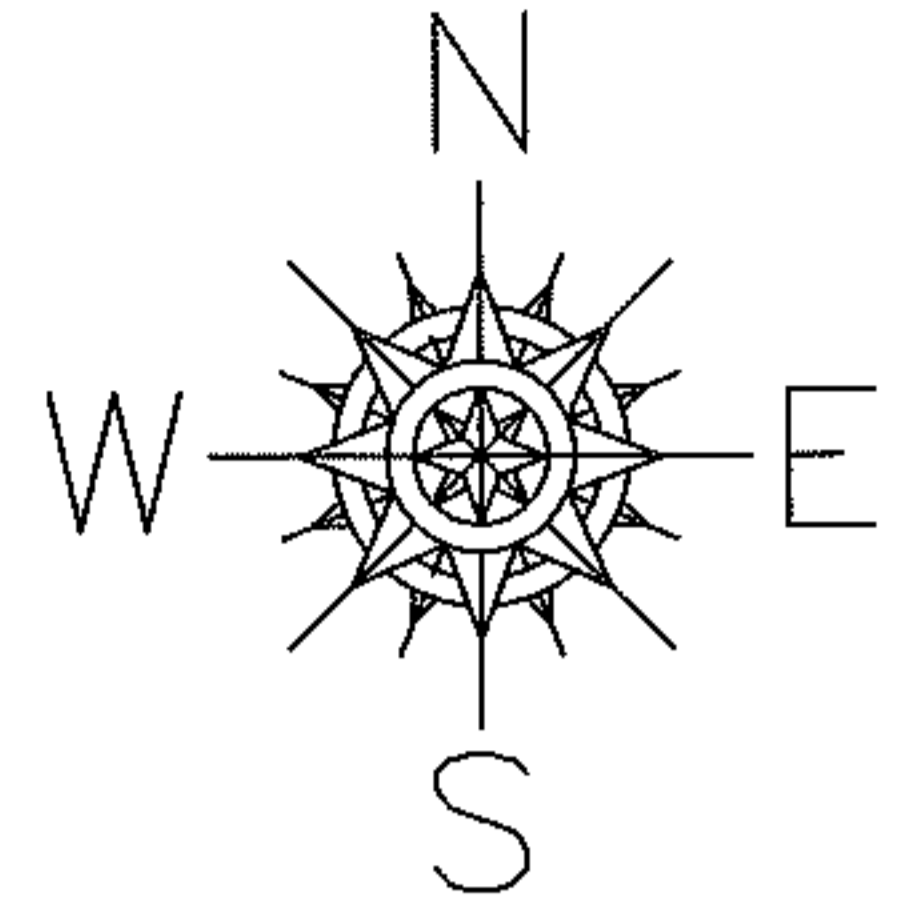


PARENT PARCEL: 18-00-016-000-027

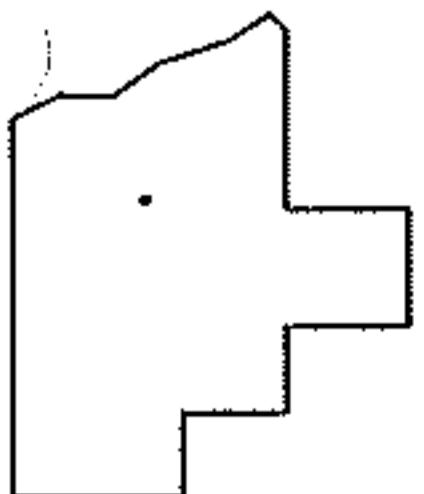
CHILD PARCEL: \_\_\_\_\_

13-02781-A

TARTING POINT: SOUTHWEST CORNER OF LAND CONVEYED TO WILLIAM CLODWICK



MEDINA - NORWALK RD. (S.R. 18)



**SPLITS/DEEDS PROCESSED**

LORAIN COUNTY TAX MAP DEPARTMENT  
226 MIDDLE AVE. ELYRIA, OHIO

SURVEYED BY: N/A

CLOSURE: N/A

MAP PAGE(S): 18-00-016-D

APPROVED BY: RRM DATE: 8-19-13

SCALE: 1"= 50' PRIOR INST.: 20130474764