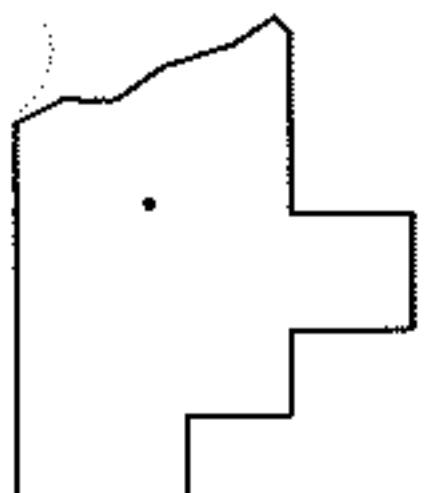
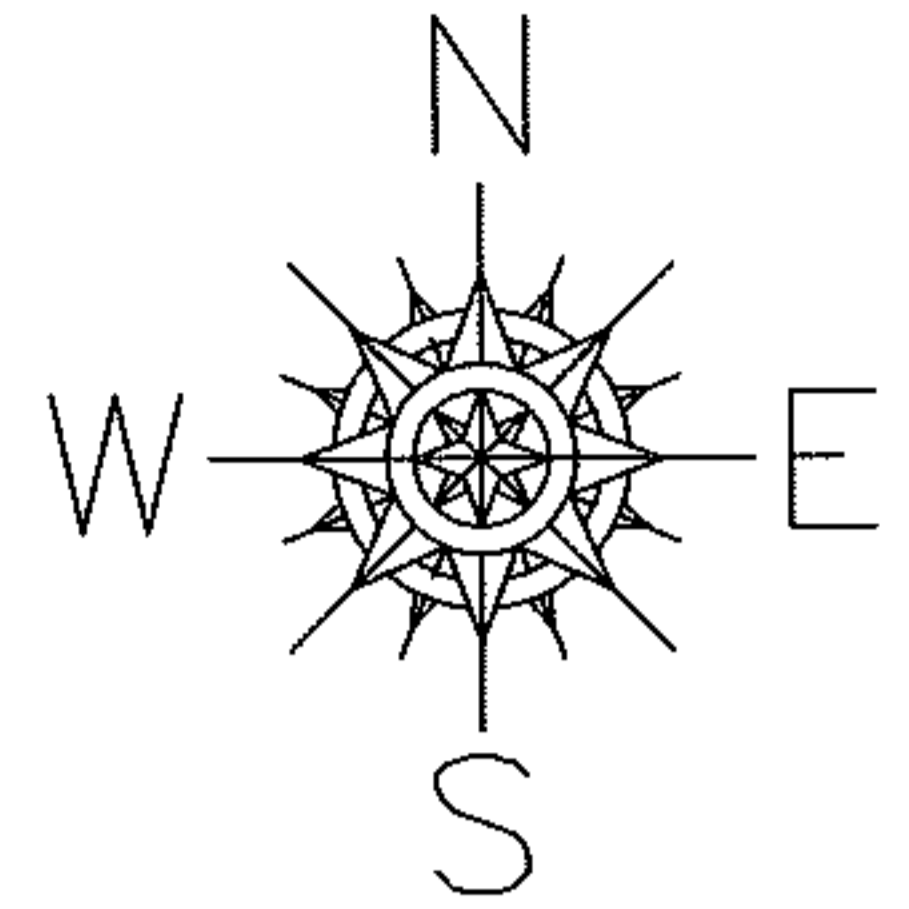
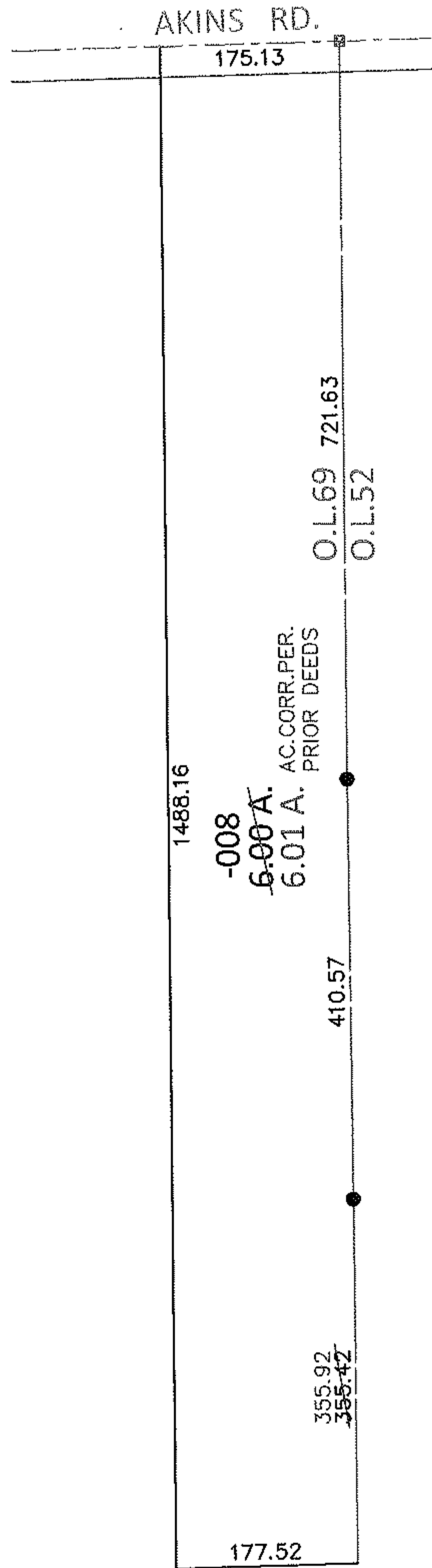


PARENT PARCEL: 12-00-069-000-008

CHILD PARCEL: \_\_\_\_\_

STARTING POINT: NORTHEAST CORNER OF O.L.69

13-02780-A



**SPLITS/DEEDS PROCESSED**

LORAIN COUNTY TAX MAP DEPARTMENT  
226 MIDDLE AVE. ELYRIA, OHIO

SURVEYED BY: N/A

CLOSURE: .01:10,000

MAP PAGE(S): 12-F

APPROVED BY: RRM DATE: 8-19-13

SCALE: 1" = 200 PRIOR INST.: N/A