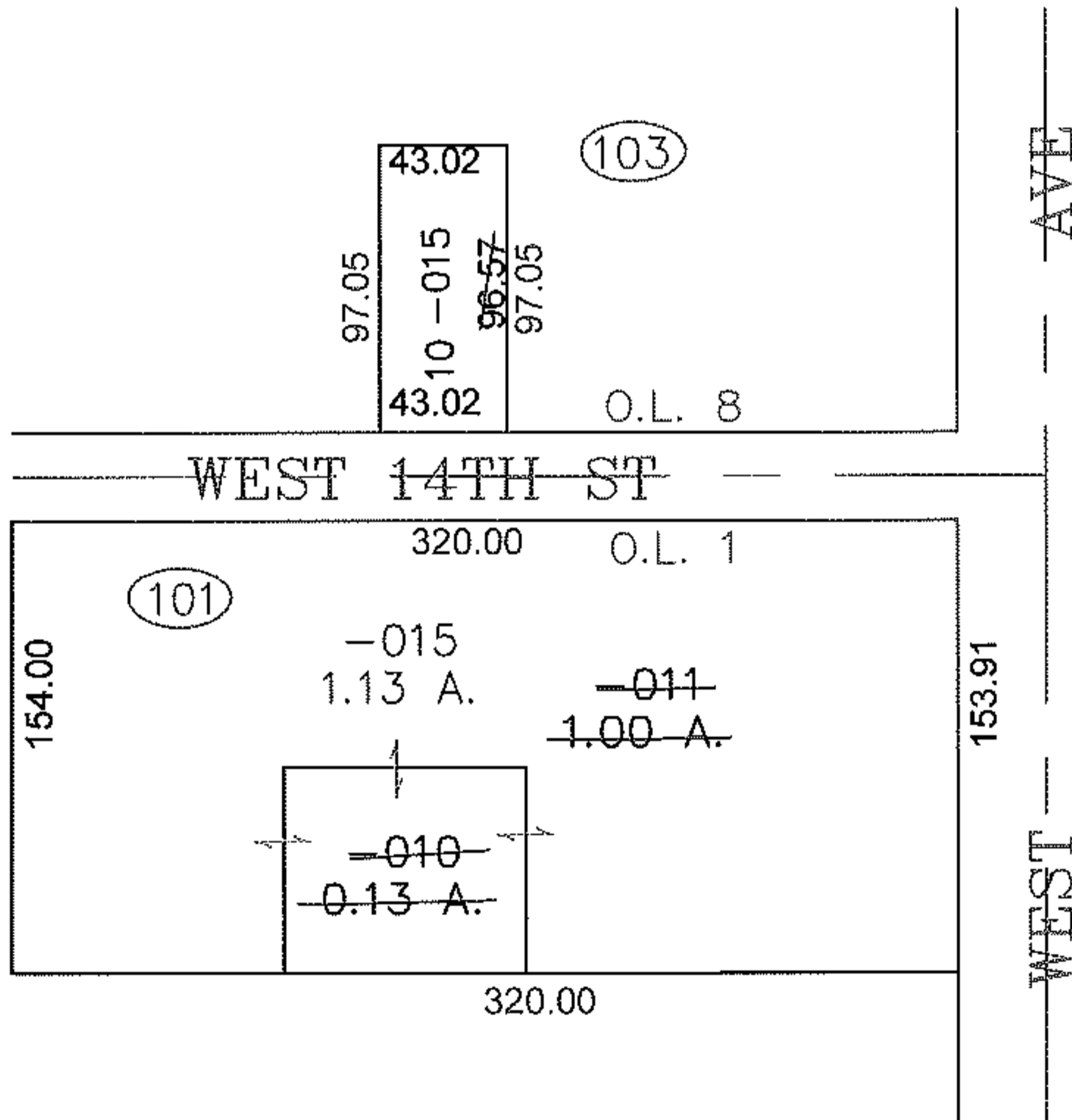
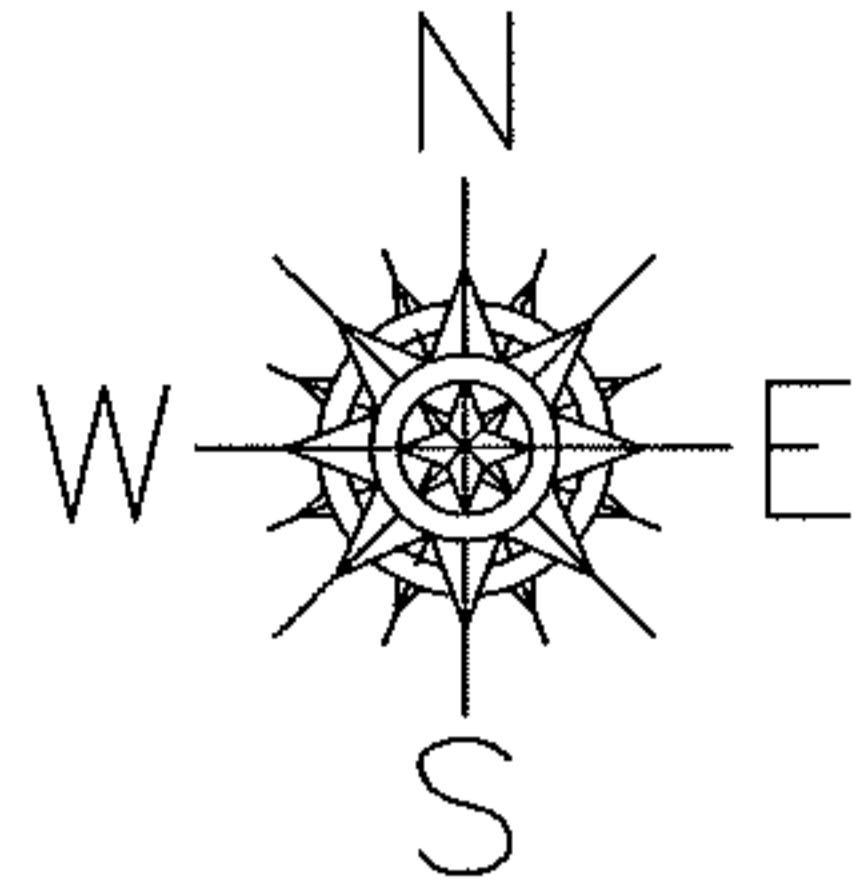


PARENT PARCEL: 06-26-001-101-010, -011 06-26-008-103-015 (STRAIGHT TRANSFER)

CHILD PARCEL: 06-26-001-101-015

STARTING POINT: SIDELINE OF WEST 14TH STREET AND WEST AVE.

09-02773



**SPLITS/DEEDS PROCESSED**

LORAIN COUNTY TAX MAP DEPARTMENT  
226 MIDDLE AVE. ELYRIA, OHIO

SURVEYED BY: MATTHEW NEFF

CLOSURE: 0.00 : 10.000

MAP PAGE(S): 6-137

APPROVED BY: JAH DATE: 12-2-09

SCALE: 1" = 100 PRIOR INSTRUMENT: DV 144/52