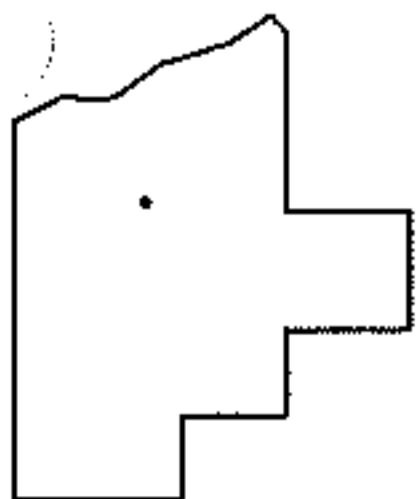
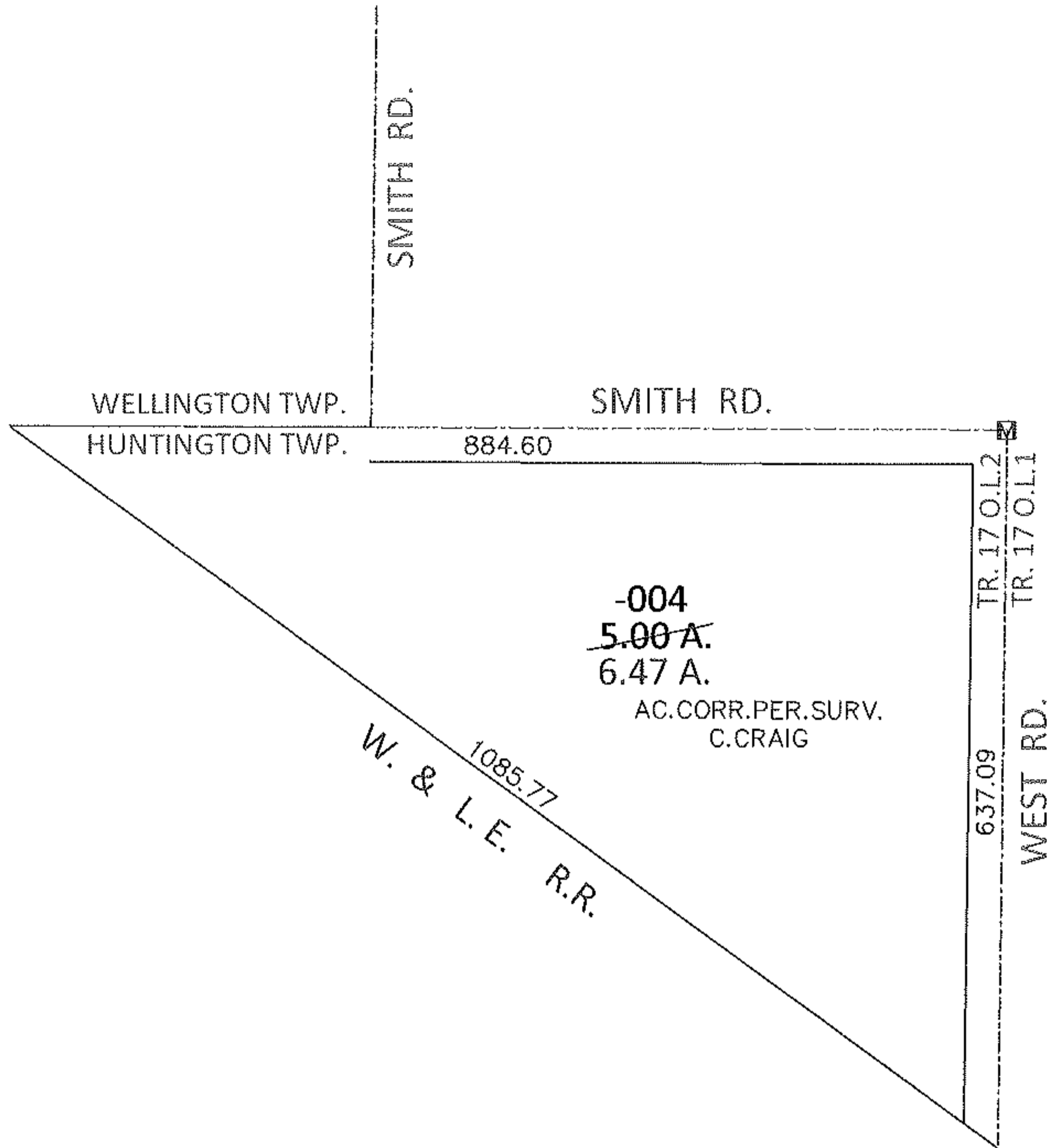
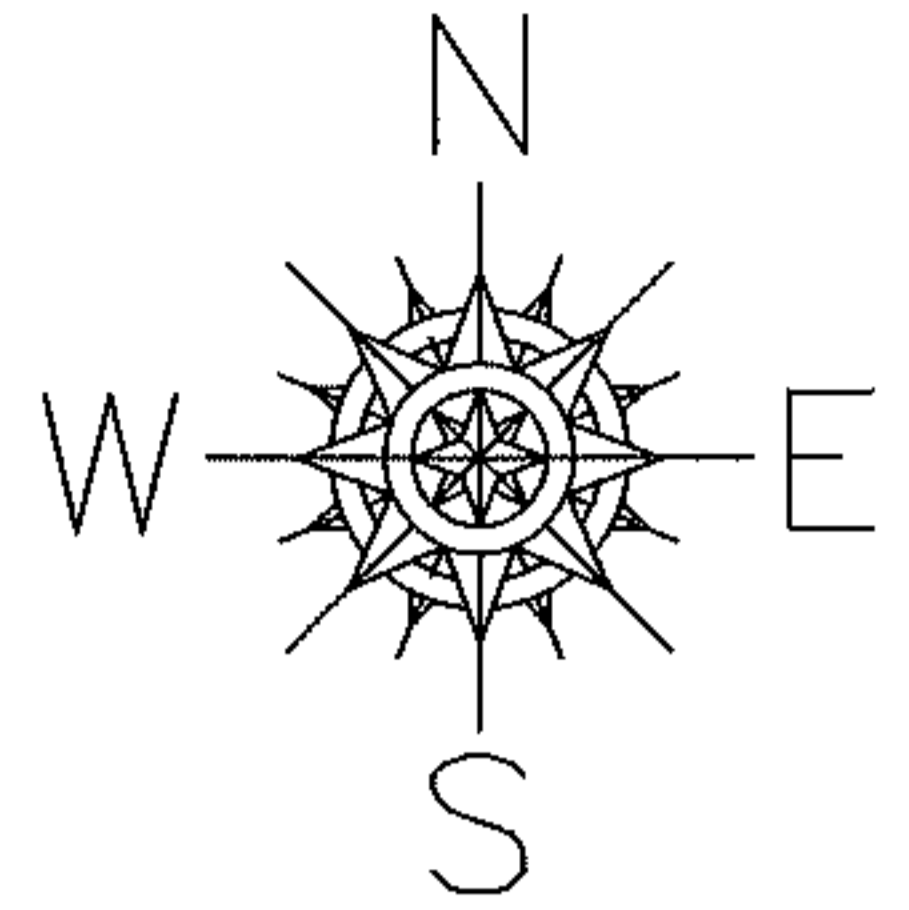


PARENT PARCEL: 21-17-002-000-004

CHILD PARCEL: _____

13-02773-A

STARTING POINT: AT A MON BOX AT THE INTERSECTION OF C/L OF SMITH RD. AND C/L OF WEST RD.



SPLITS/DEEDS PROCESSED

LORAIN COUNTY TAX MAP DEPARTMENT
226 MIDDLE AVE. ELYRIA, OHIO

SURVEYED BY: CHAD F. CRAIG

CLOSURE: .01:10,000

MAP PAGE(S): 21-D

APPROVED BY: RRM DATE: 8-5-13

SCALE: 1"= 200 PRIOR INST.: 20130456151