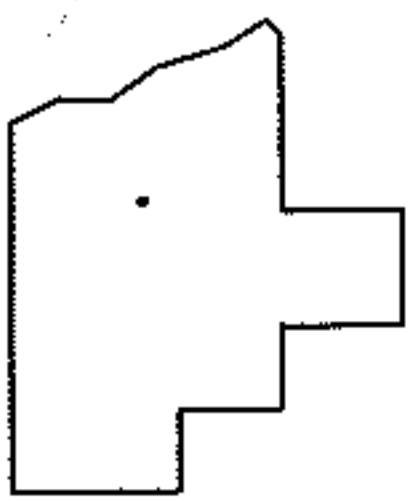
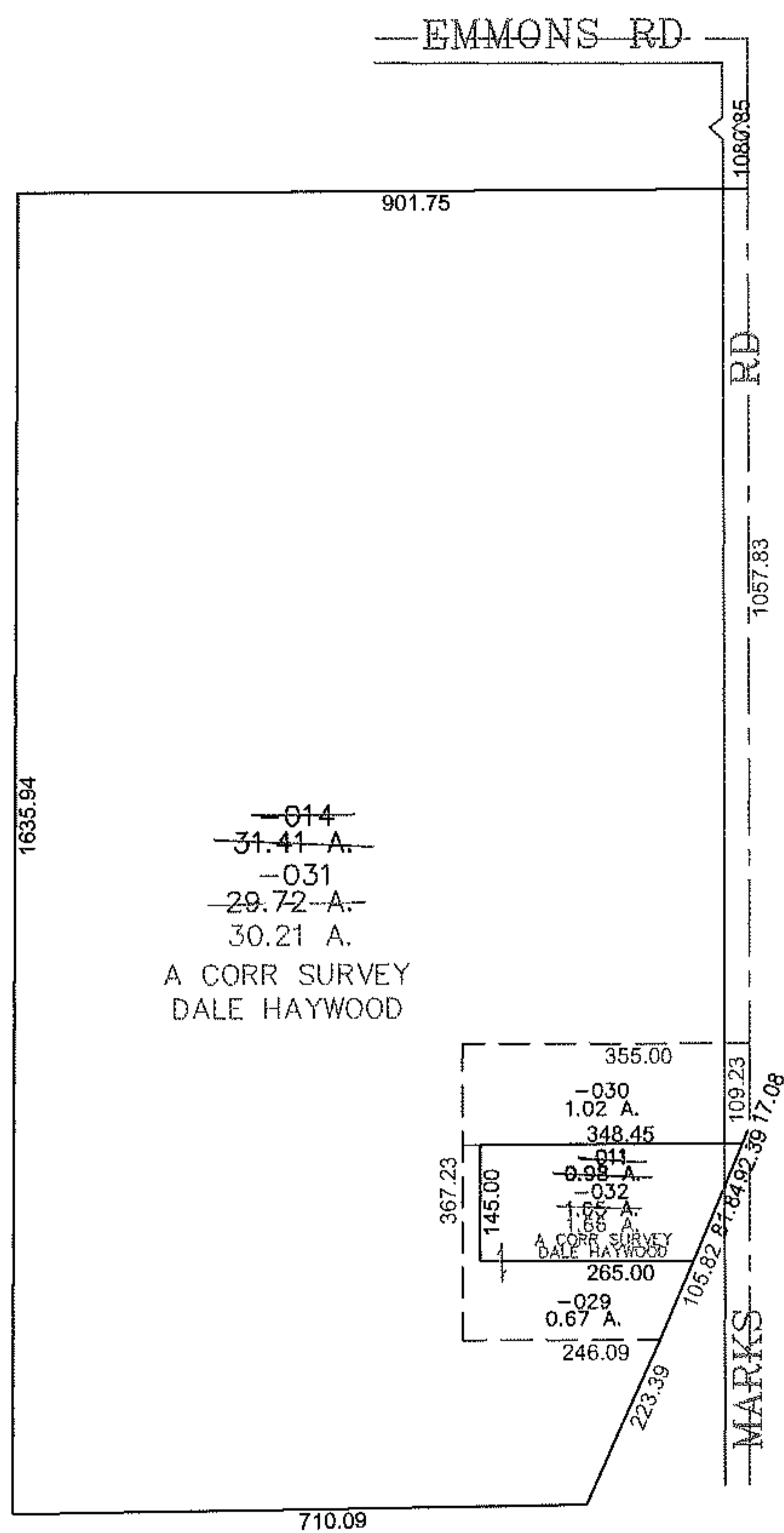
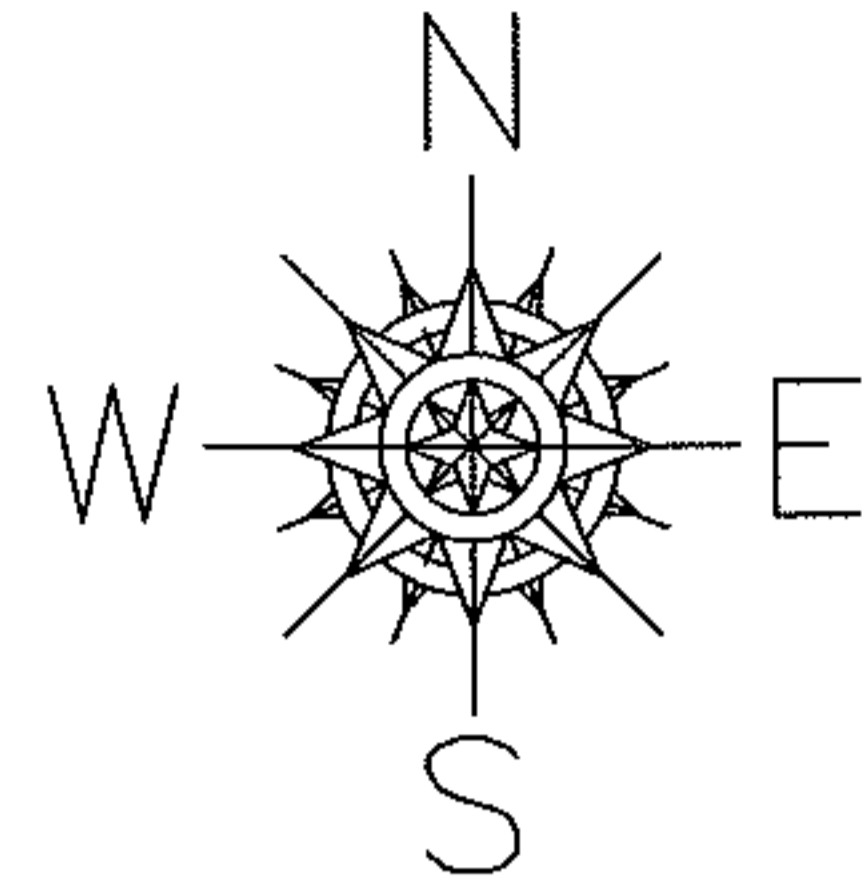


PARENT PARCEL: 12-00-009-000-014, -011

CHILD PARCEL: 12-00-009-000-029 THRU -032

STARTING POINT: CENTERLINE OF EMMONS RD & MARKS RD

09-02766



**SPLITS/DEEDS PROCESSED**  
 LORAIN COUNTY TAX MAP DEPARTMENT  
 226 MIDDLE AVE. ELYRIA, OHIO

SURVEYED BY: DALE HAYWOOD  
 CLOSURE: 0.00 : 10.000  
 MAP PAGE(S): 12-00-009-B  
 APPROVED BY: JAH DATE: 11-9-09  
 SCALE: 1" = 300 PRIOR INSTRUMENT: 20090280393