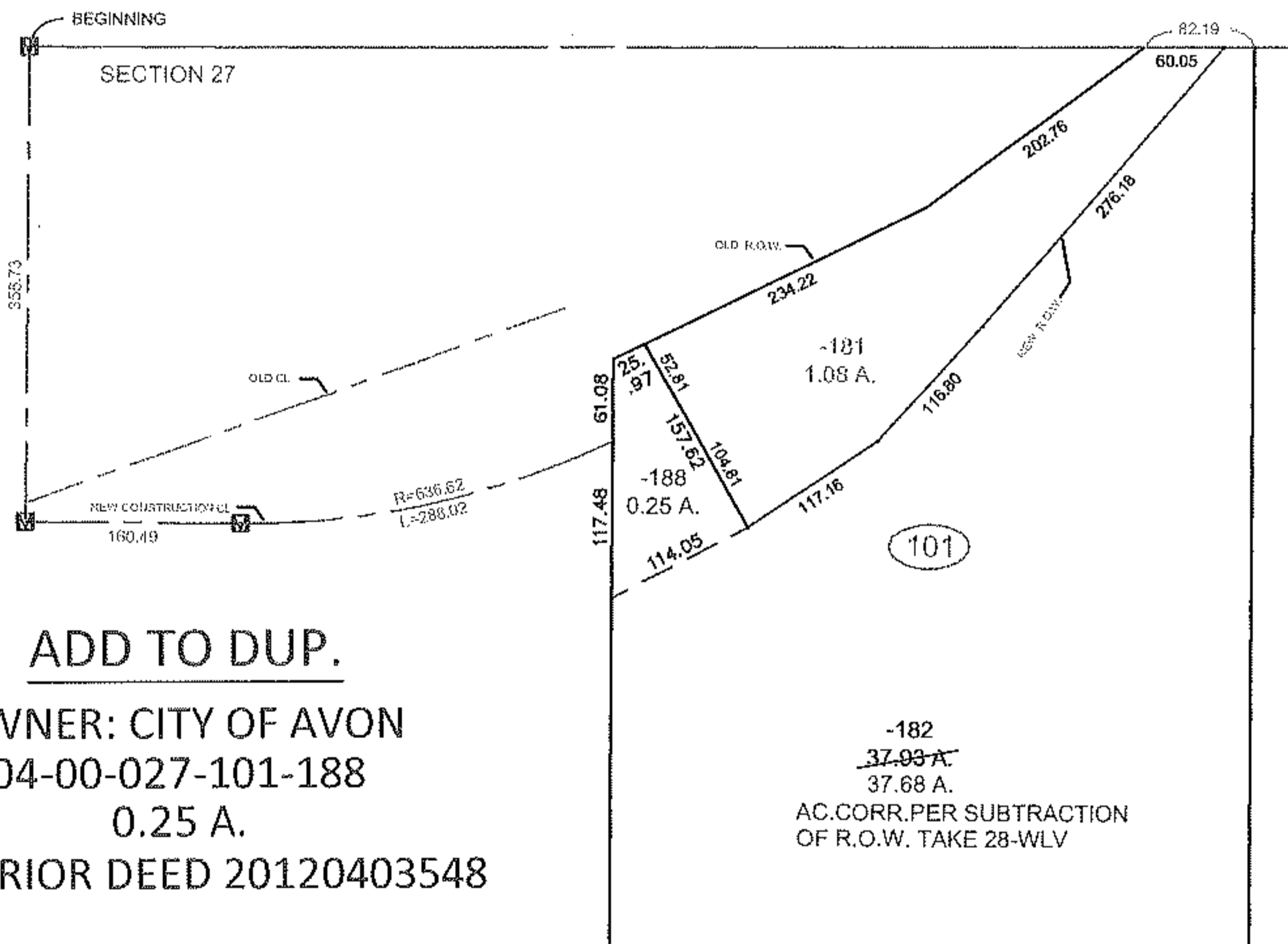
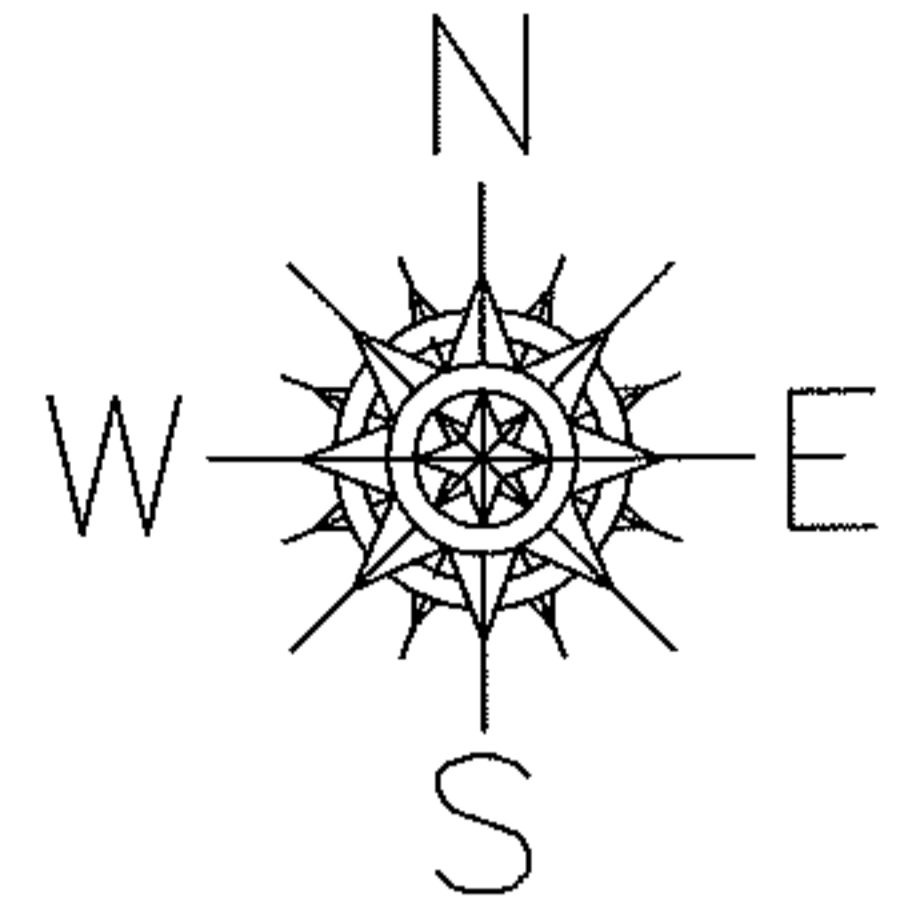


PARENT PARCEL: 04-00-027-101-182

CHILD PARCEL: 04-00-027-101-188

STARTING POINT: N.W. CORNER OF SECTION 27

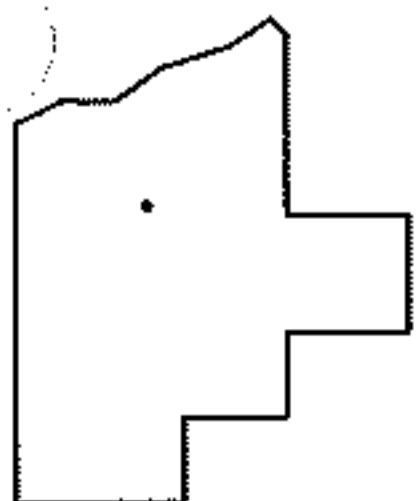
13-02766-C



ADD TO DUP.
 OWNER: CITY OF AVON
 04-00-027-101-188
 0.25 A.
 PER PRIOR DEED 20120403548

-182
~~37.03 A.~~
 37.68 A.
 AC.CORR.PER SUBTRACTION
 OF R.O.W. TAKE 28-WLV

LOR-90-22.26
 28-WLV



SPLITS/DEEDS PROCESSED
 LORAIN COUNTY TAX MAP DEPARTMENT
 226 MIDDLE AVE. ELYRIA, OHIO

SURVEYED BY: WILLIAM J. SALA
 CLOSURE: 0.01 : 10,000
 MAP PAGE(S): 4-00-027-A
 APPROVED BY: RRM DATE: 7-23-13
 SCALE: 1" = 200 PRIOR INST.: 20120403548