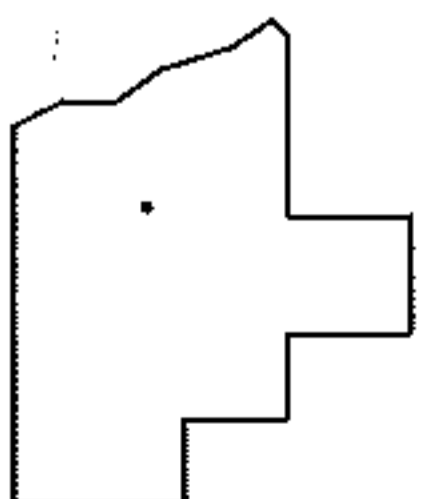
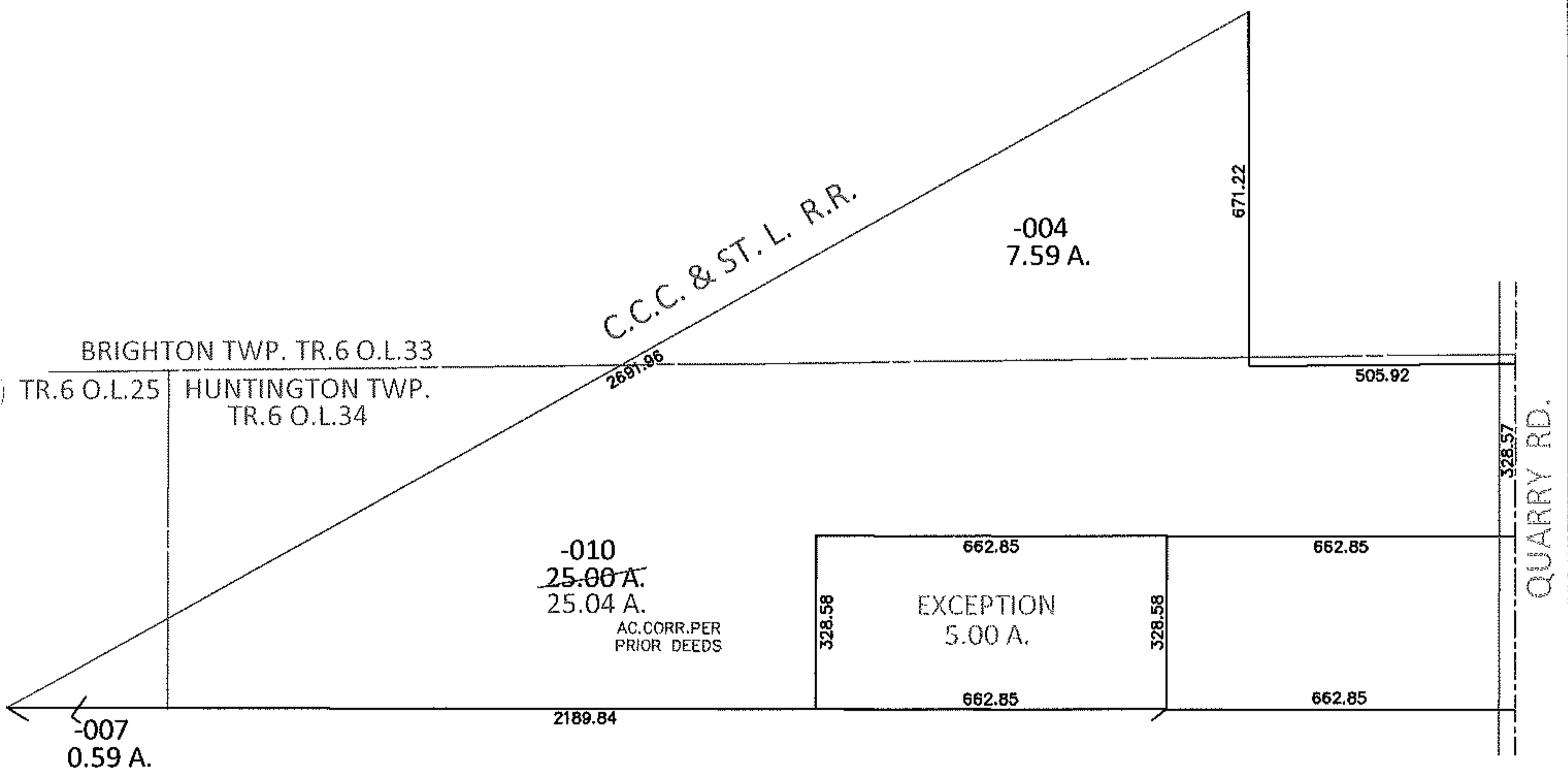
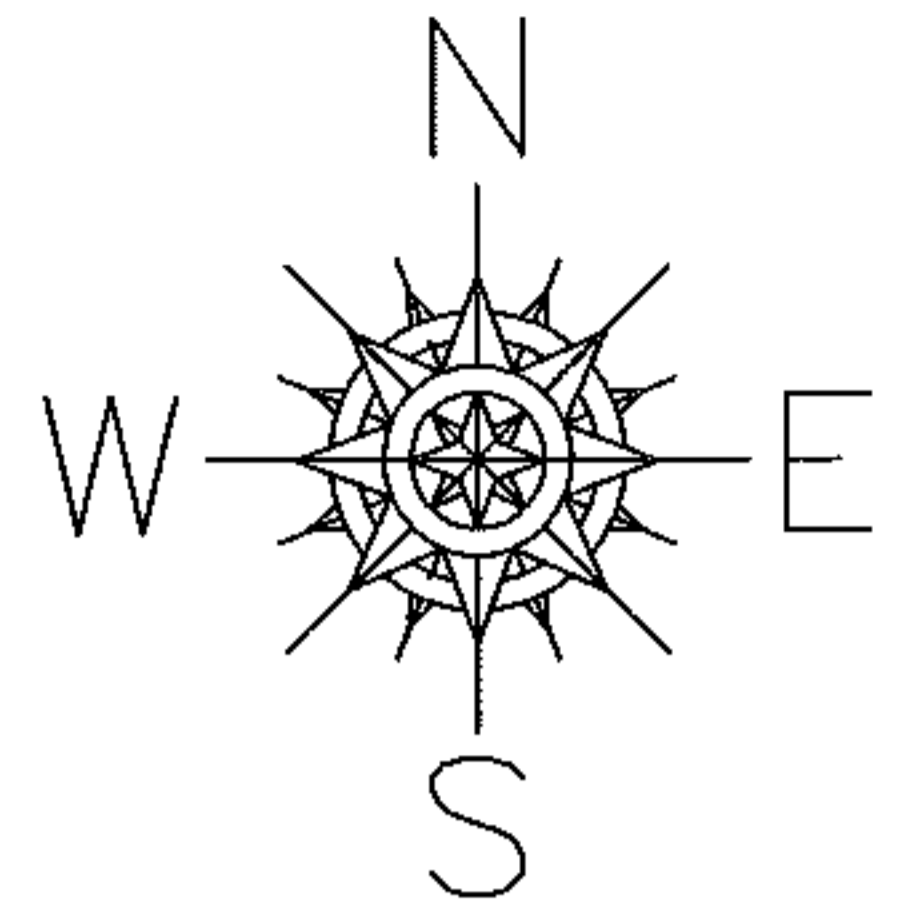


PARENT PARCEL: 20-06-034-000-010

CHILD PARCEL: _____

13-02765-A

STARTING POINT: SOUTHEAST CORNER OF LAND CONVEYED TO GROVER C. TURPIN JR. (DV 987/590)



SPLITS/DEEDS PROCESSED

LORAIN COUNTY TAX MAP DEPARTMENT
226 MIDDLE AVE. ELYRIA, OHIO

SURVEYED BY: N/A

CLOSURE: .01:10,000

MAP PAGE(S): 20-D

APPROVED BY: RRM DATE: 8-23-13

SCALE: 1"= 400 PRIOR INST.: 20130471187