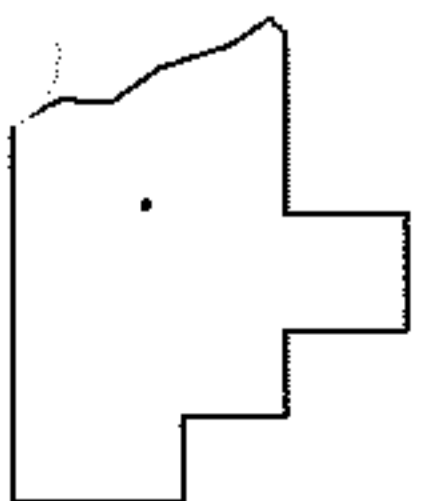
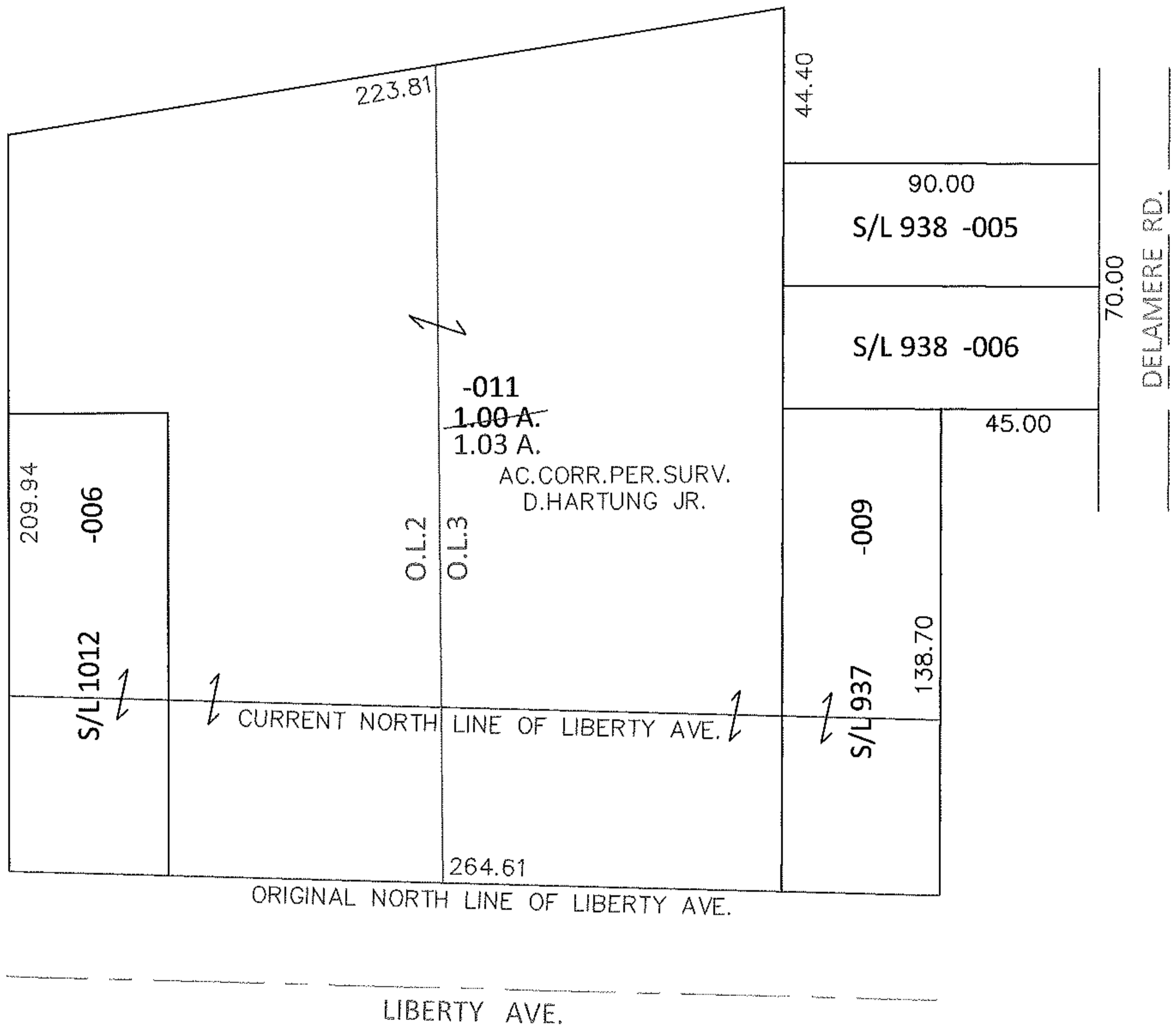
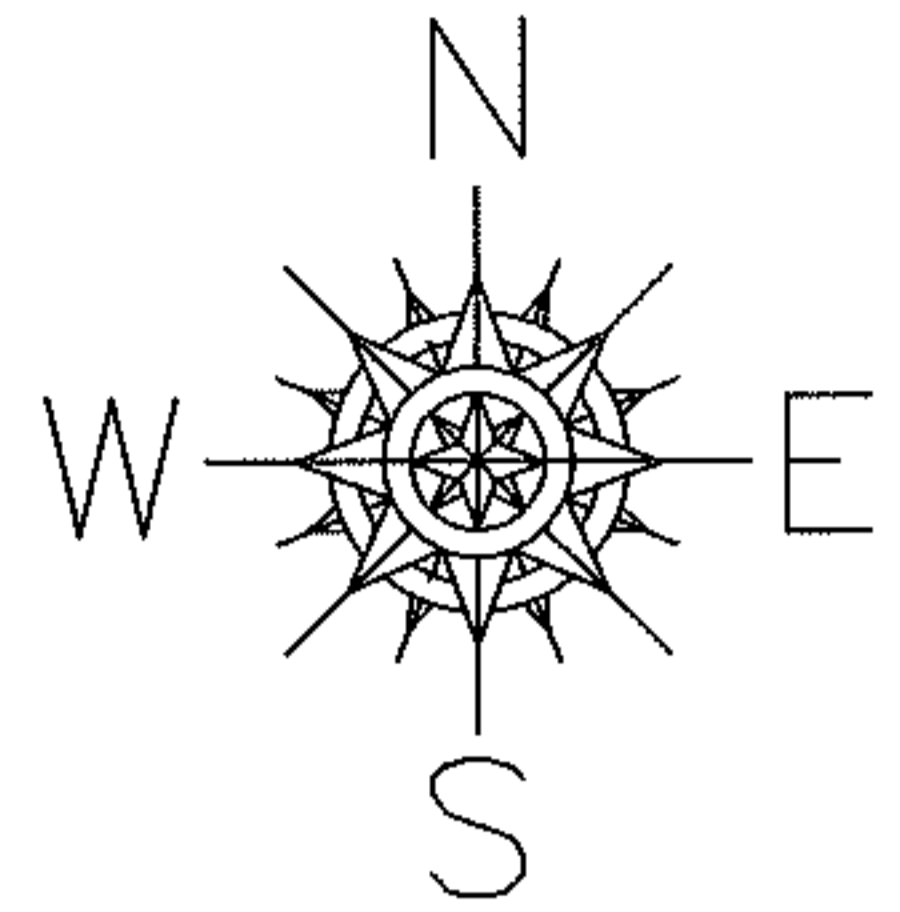


PARENT PARCEL: 01-00-002-114-006, 01-00-003-114-005, -006, -009, -011

CHILD PARCEL: \_\_\_\_\_

13-02763-A

STARTING POINT: NORTHEAST CORNER OF S/L 1085 IN VERMILION ON THE LAKE SUB.



**SPLITS/DEEDS PROCESSED**

LORAIN COUNTY TAX MAP DEPARTMENT  
226 MIDDLE AVE. ELYRIA, OHIO

SURVEYED BY: DANIEL E. HARTUNG JR.

CLOSURE: .01:10,000

MAP PAGE(S): 01-00-002-B, 01-00-003-A

APPROVED BY: RRM DATE: 7-17-13

SCALE: 1" = 50' PRIOR INST.: 20110388873