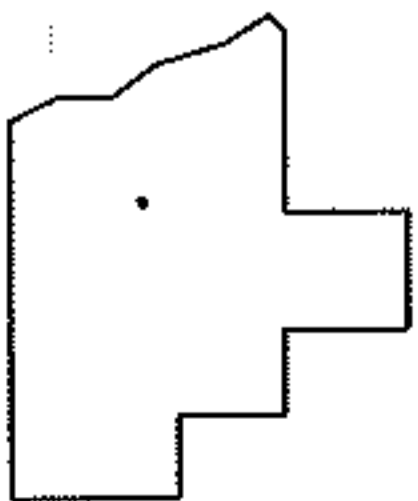
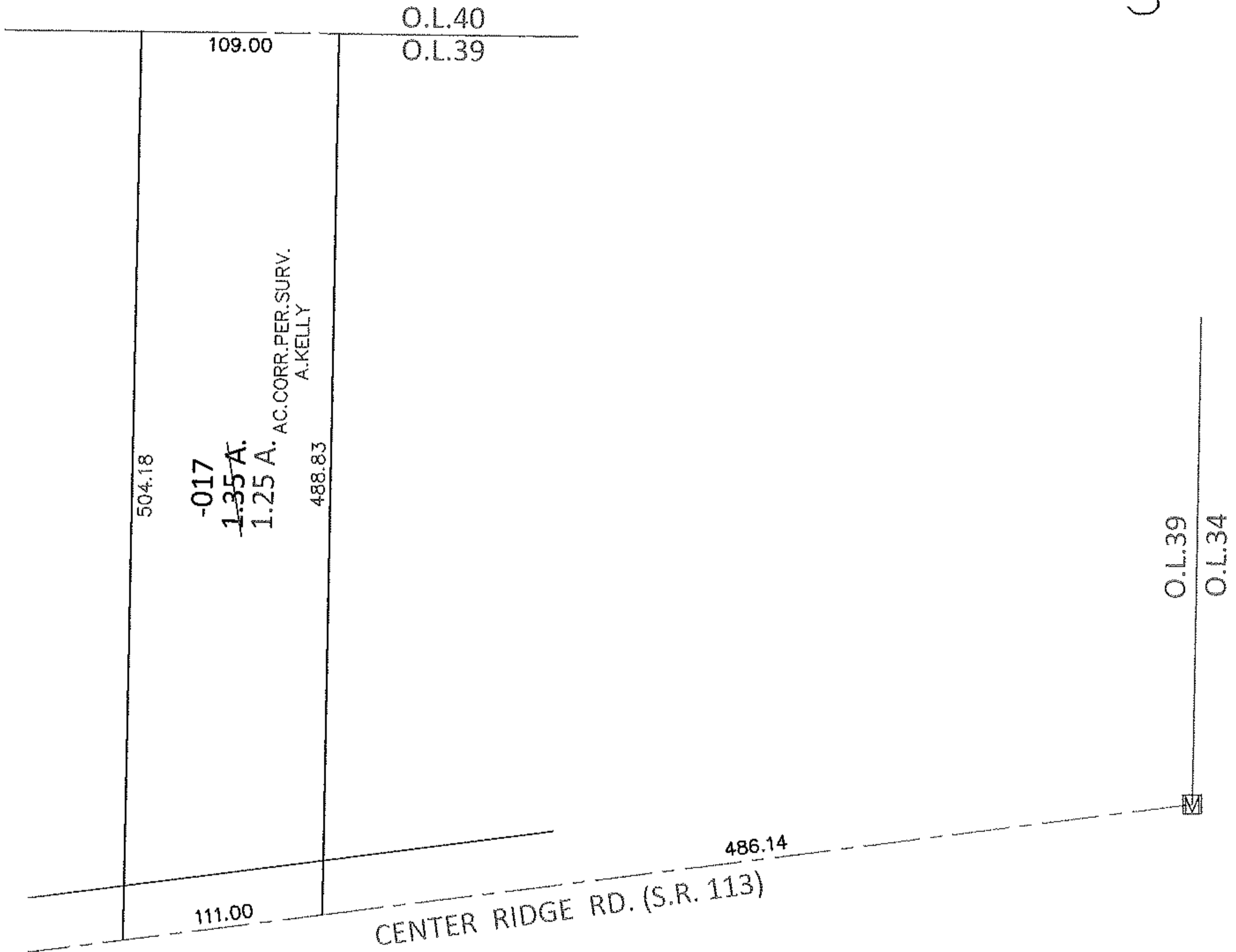
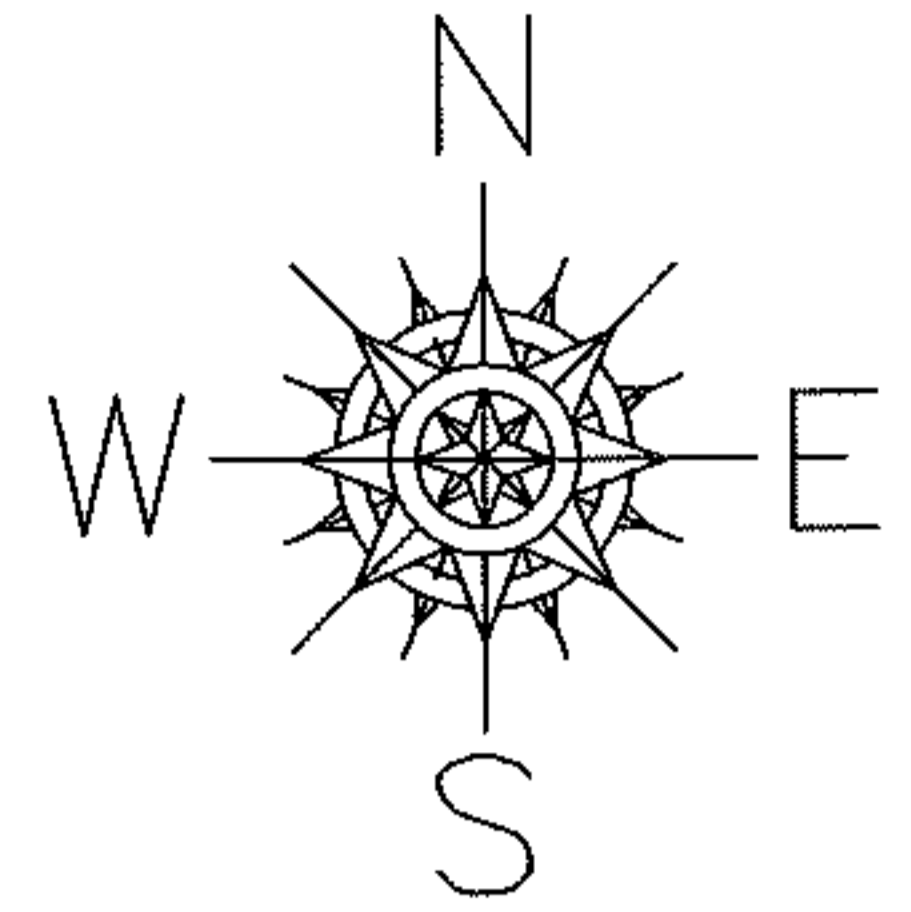


PARENT PARCEL: 07-00-039-000-017

CHILD PARCEL: \_\_\_\_\_

13-02762-A

STARTING POINT: AT A MON BOX AT THE INTERSECTION OF C/L OF S.R.113 AND EAST LINE OF O.L.39



**SPLITS/DEEDS PROCESSED**

LORAIN COUNTY TAX MAP DEPARTMENT  
226 MIDDLE AVE. ELYRIA, OHIO

SURVEYED BY: AMY M. KELLY

CLOSURE: .01:10,000

MAP PAGE(S): 7-00-039-B

APPROVED BY: RRM DATE: 7-17-13

SCALE: 1"= 100 PRIOR INST.: 20060170534