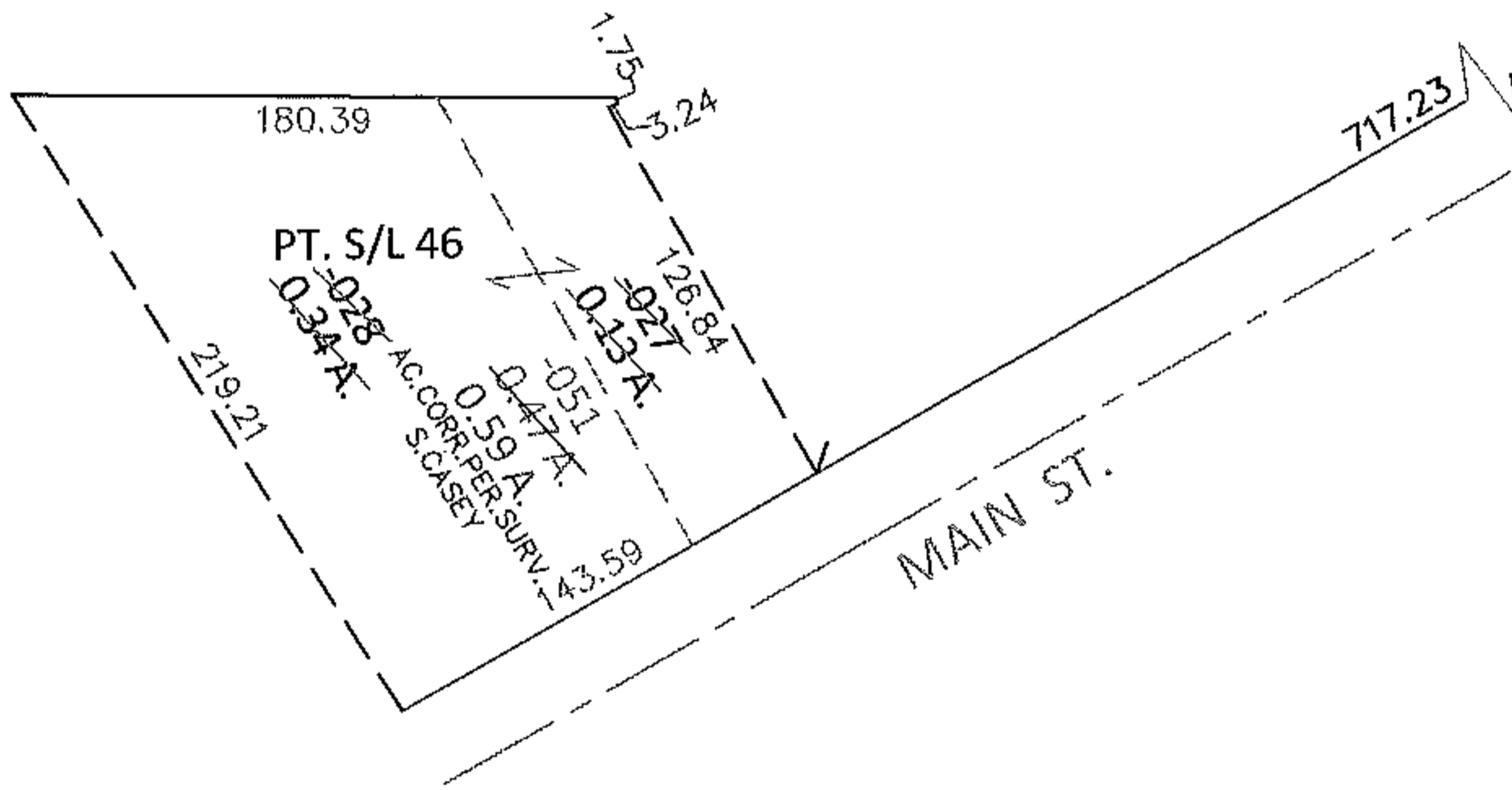
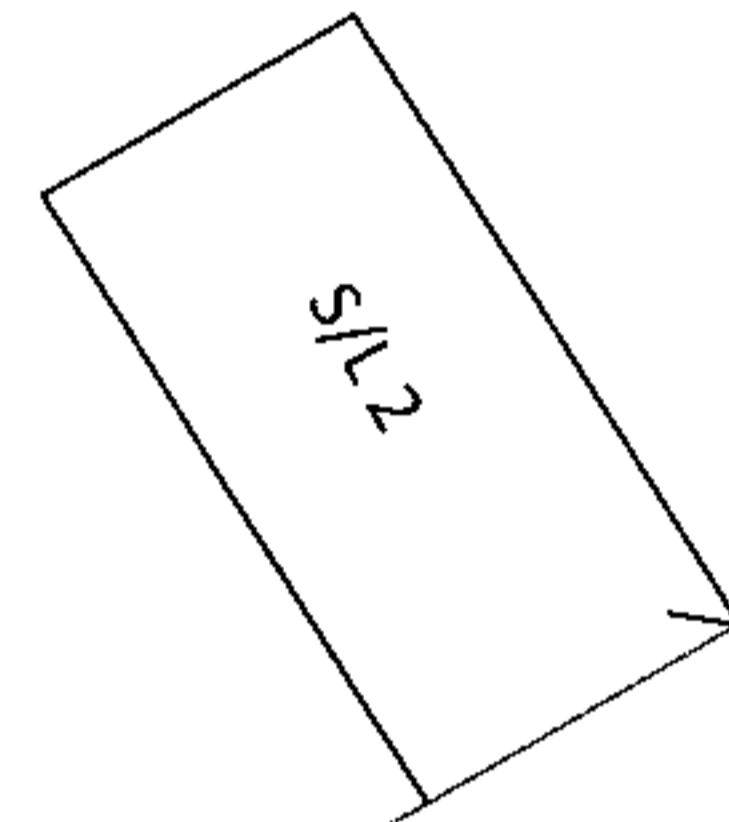
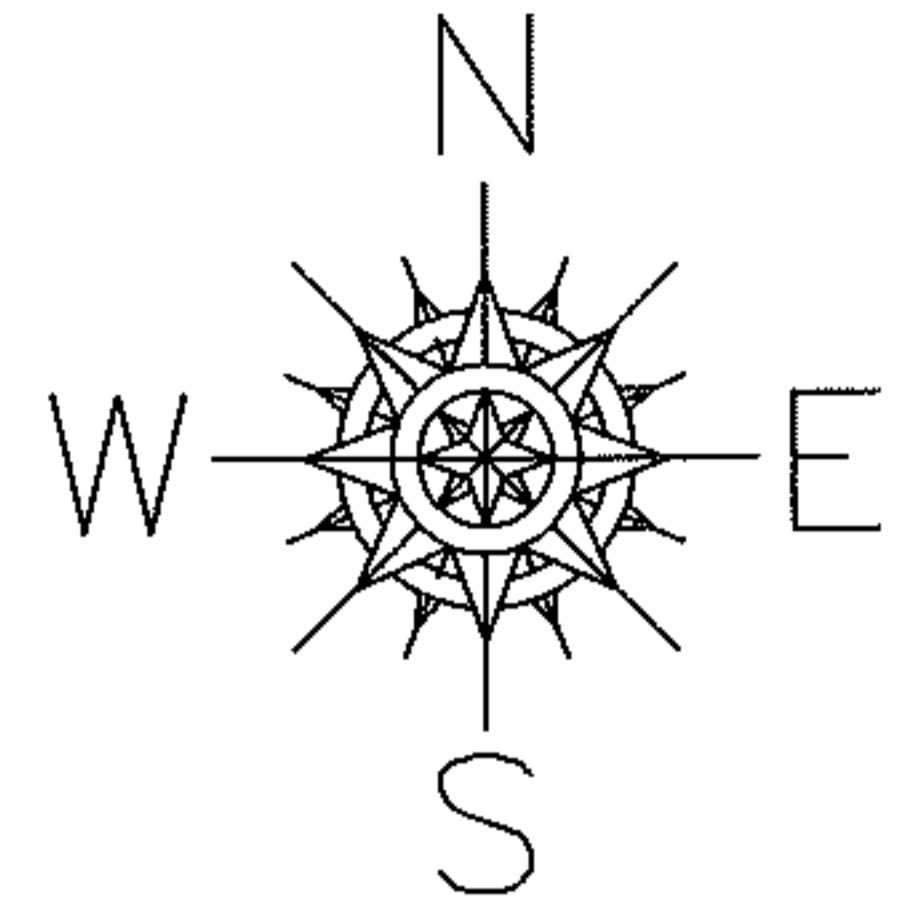


PARENT PARCEL: 20-05-023-101-027, -028

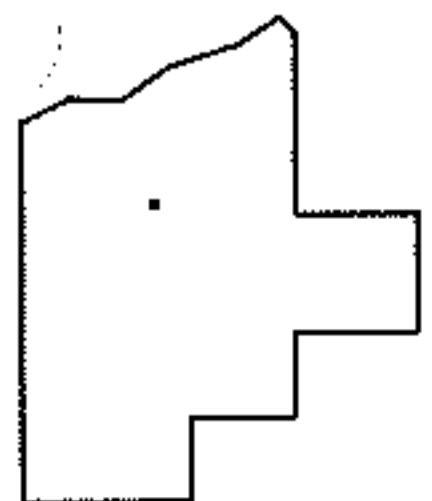
CHILD PARCEL: 20-05-023-101-051

13-02761-C

STARTING POINT: NORTH LINE OF MAIN ST. AT THE EAST CORNER OF S/L 2



COMBINATION CORRECTION
TO REMOVE SURVEY BEFORE NEXT TRANS
SURVEY BY SCOTT J. CASEY



SPLITS/DEEDS PROCESSED

LORAIN COUNTY TAX MAP DEPARTMENT
226 MIDDLE AVE. ELYRIA, OHIO

SURVEYED BY: SCOTT J. CASEY
CLOSURE: .01:10,000
MAP PAGE(S): 20-05-023-B
APPROVED BY: RRM DATE: 7-16-13
SCALE: 1"= 100 PRIOR INST.: 20130465623