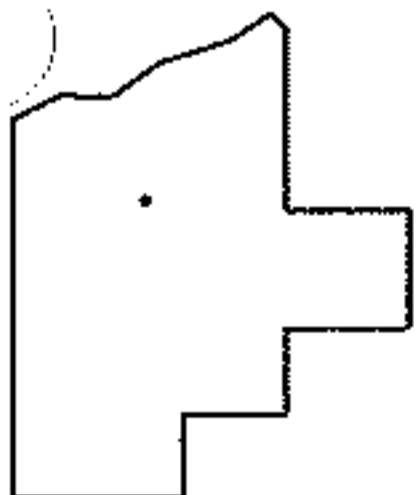
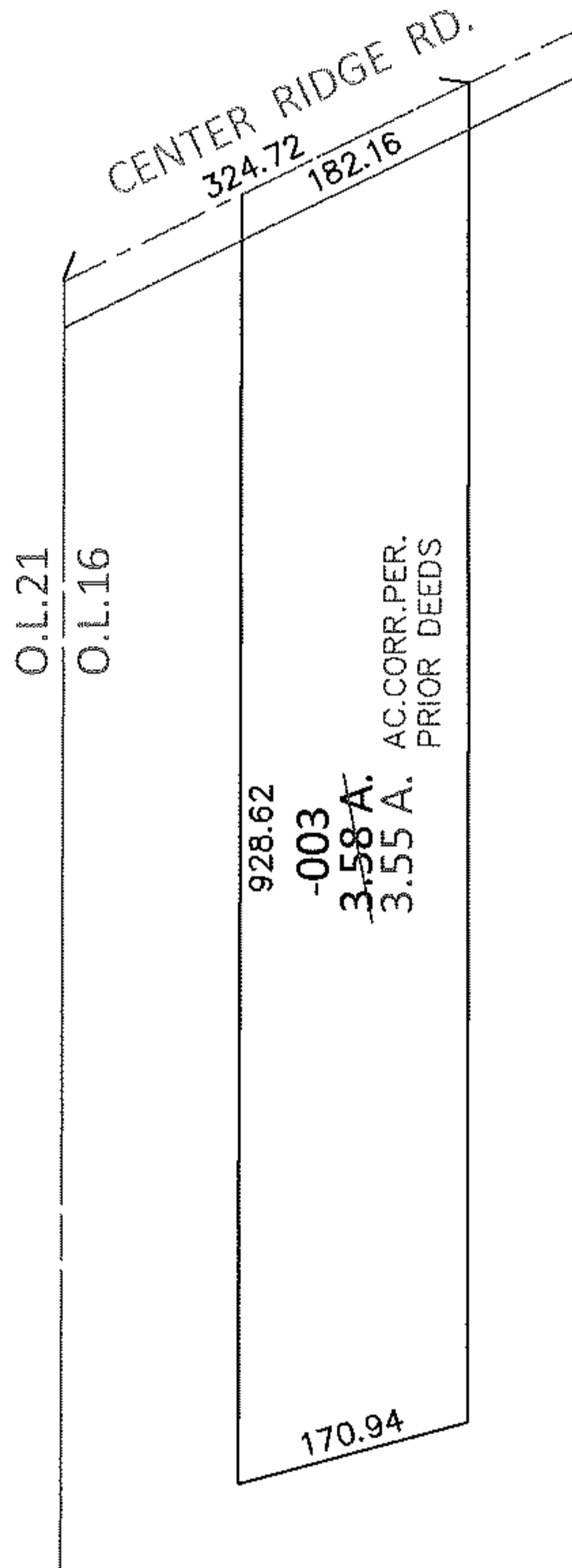
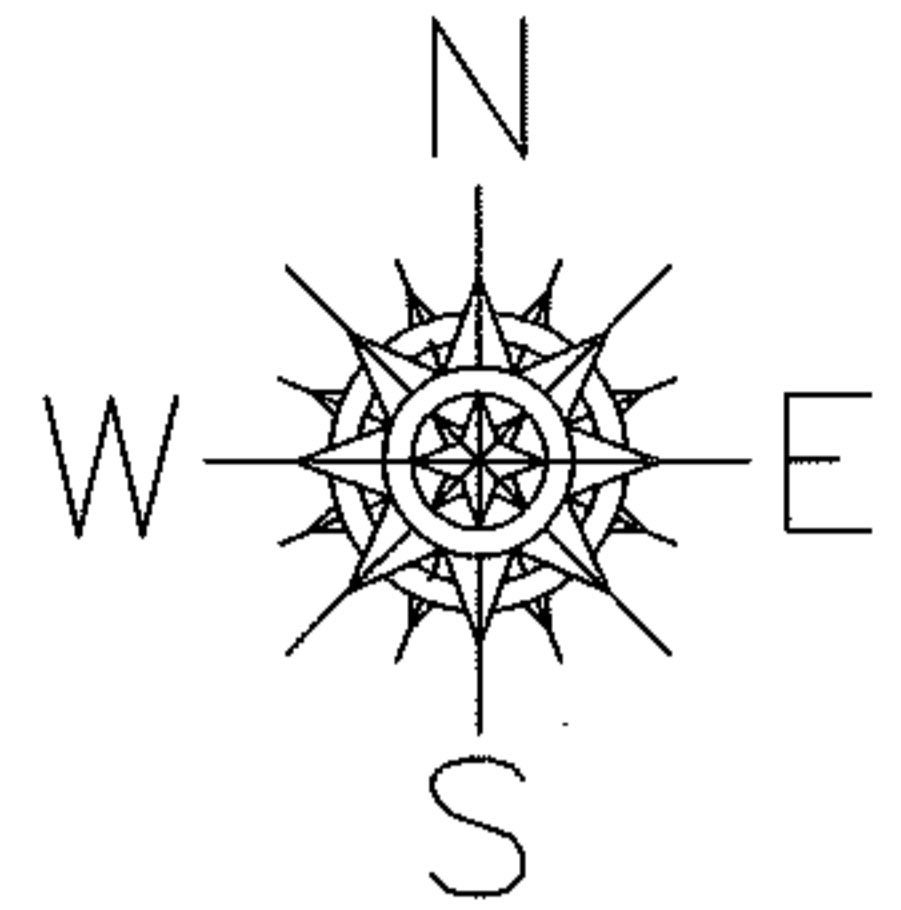


PARENT PARCEL: 07-00-016-104-003

CHILD PARCEL: \_\_\_\_\_

13-02760-A

STARTING POINT: 324.72 FT. EAST OF THE WEST LINE OF O.L.16



**SPLITS/DEEDS PROCESSED**

LORAIN COUNTY TAX MAP DEPARTMENT  
226 MIDDLE AVE. ELYRIA, OHIO

SURVEYED BY: N/A

CLOSURE: N/A

MAP PAGE(S): 7-00-016-A

APPROVED BY: RRM DATE: 8-23-13

SCALE: 1"=200 PRIOR INST.: 20130470090