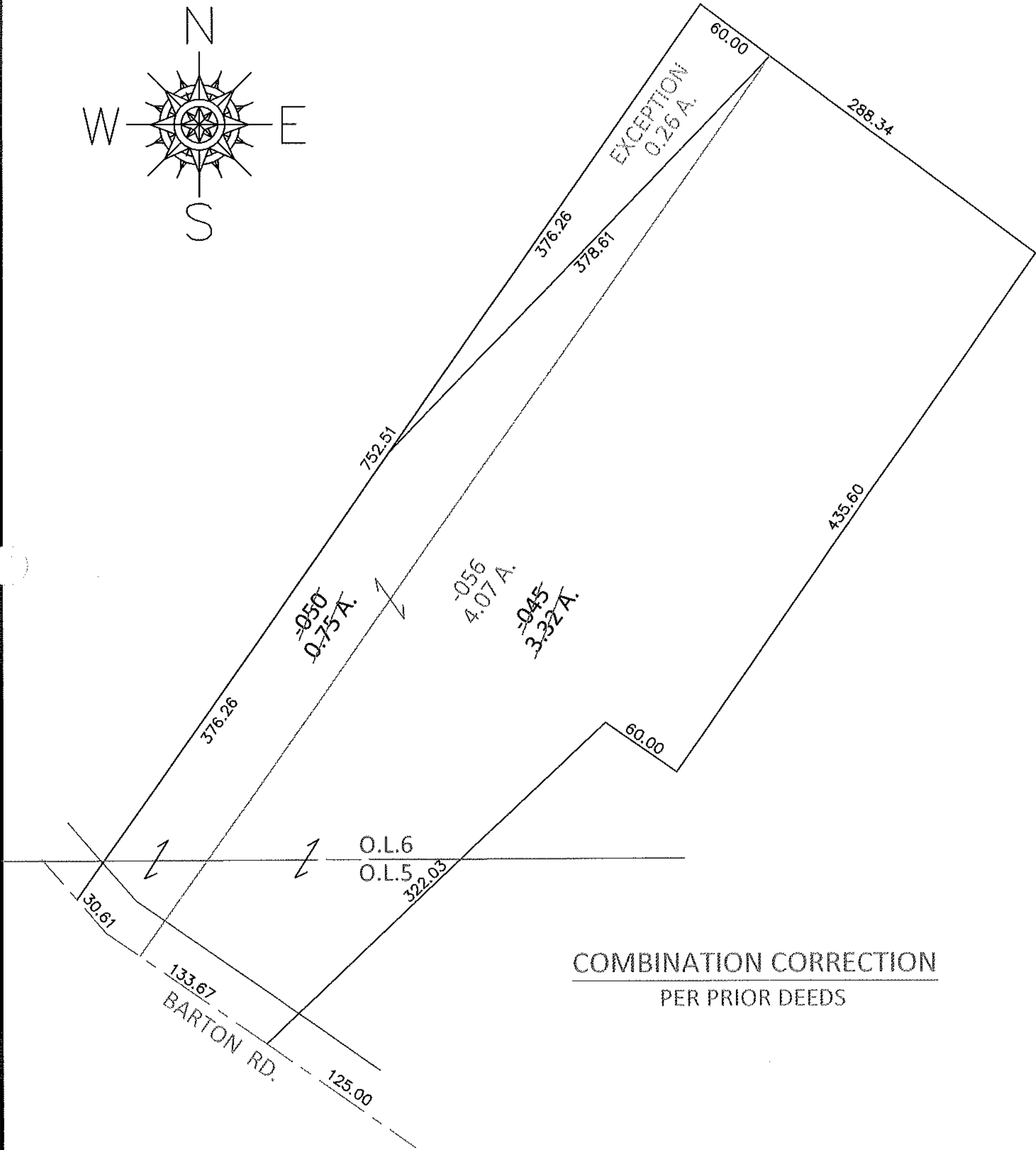
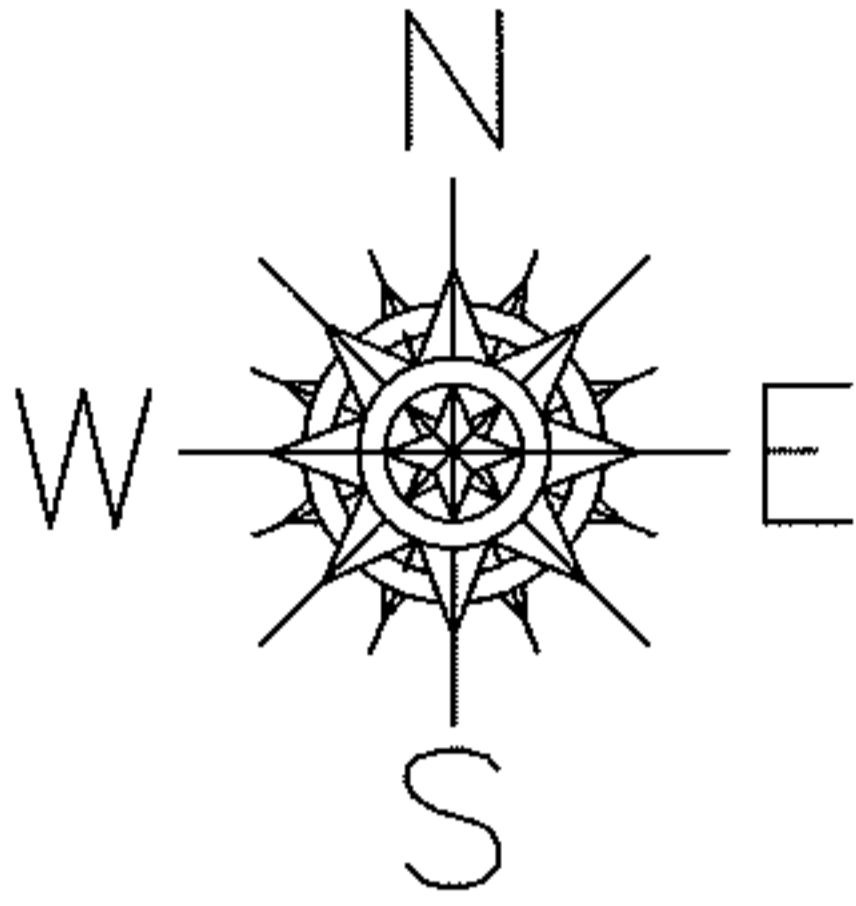


PARENT PARCEL: 07-00-006-106-045, -050

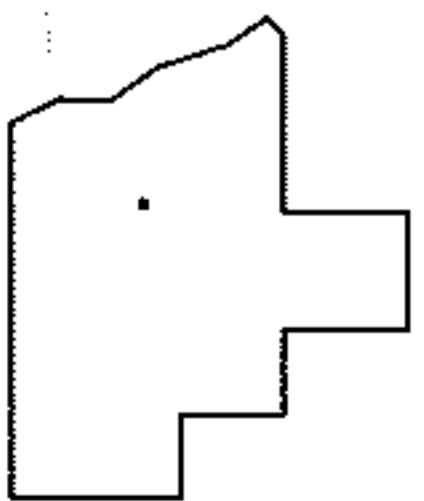
CHILD PARCEL: 07-00-006-106-056

13-02759-C

STARTING POINT: MOST SOUTHERLY CORNER OF LAND CONVEYED TO MARY E. O'DONNELL (DV 176/419)



COMBINATION CORRECTION
PER PRIOR DEEDS



SPLITS/DEEDS PROCESSED

LORAIN COUNTY TAX MAP DEPARTMENT
226 MIDDLE AVE. ELYRIA, OHIO

SURVEYED BY: CHARLES W. ROOT

CLOSURE: .01:10,000

MAP PAGE(S): 7-00-005-B, 7-00-006-D

APPROVED BY: RRM DATE: 7-14-13

SCALE: 1"= 100 PRIOR INST.: OR 1176/912