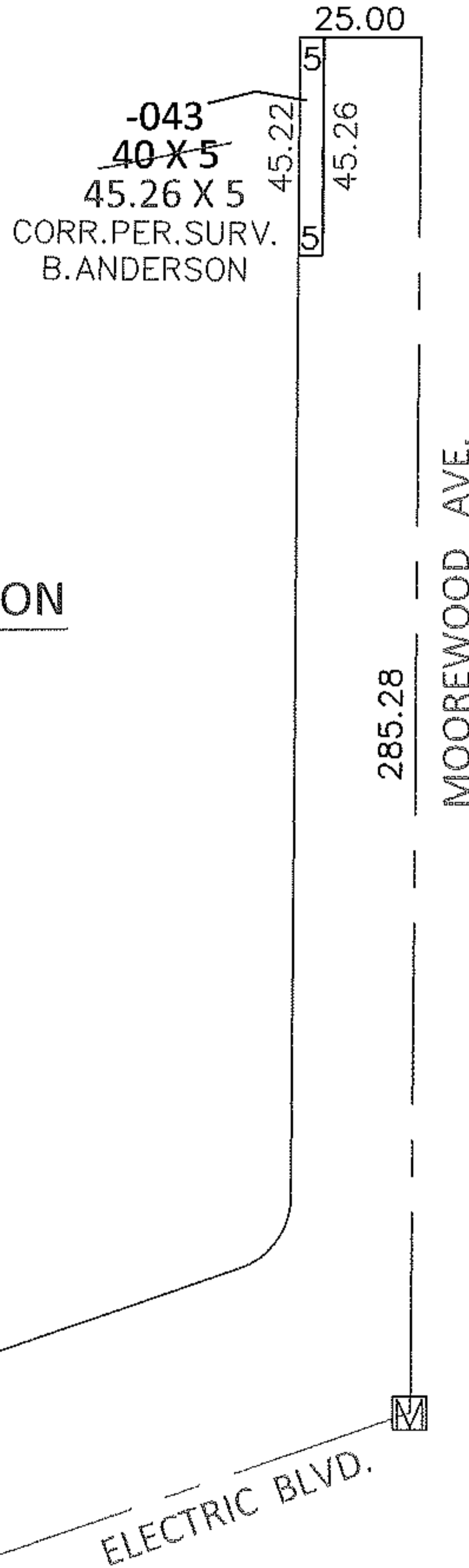
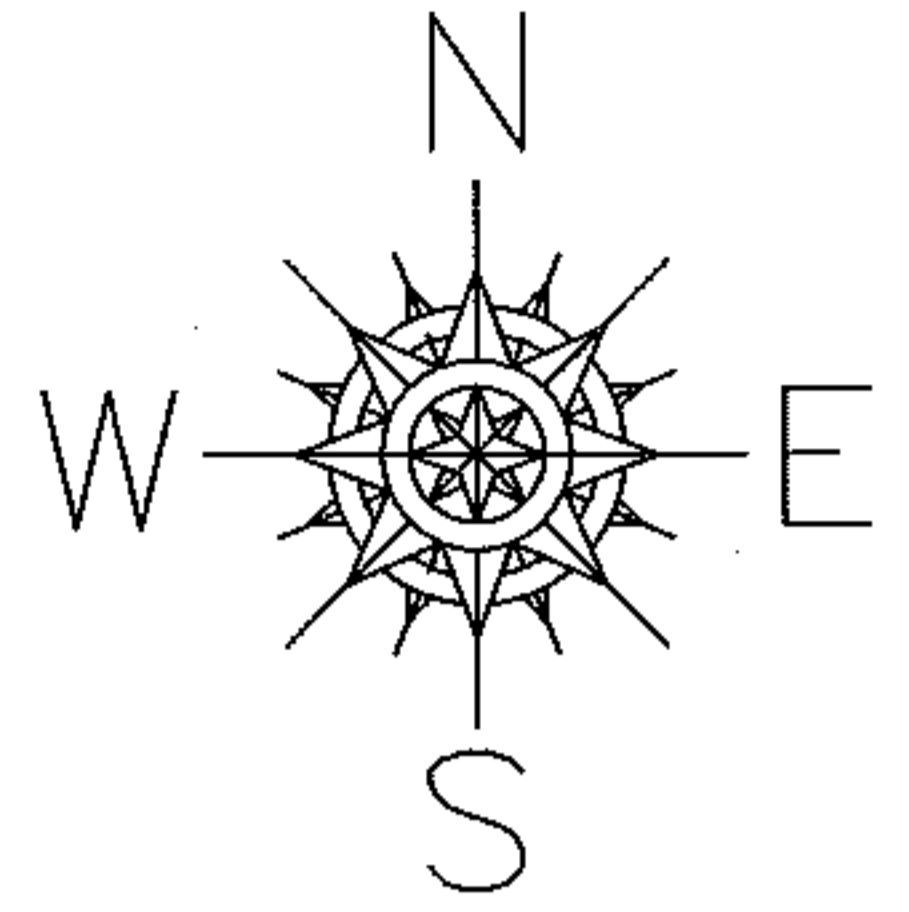


PARENT PARCEL: 04-00-007-107-043

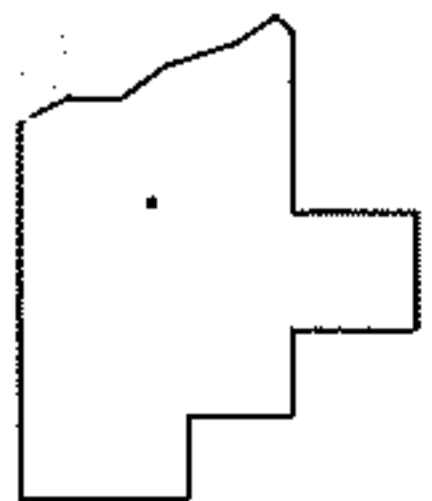
CHILD PARCEL: _____

13-02753-D

STARTING POINT: AT A MON BOX AT THE INTERSECTION OF C/L OF MOOREWOOD AVE. AND C/L OF ELECTRIC BLVD.



FRONTAGE CORRECTION



SPLITS/DEEDS PROCESSED

LORAIN COUNTY TAX MAP DEPARTMENT
226 MIDDLE AVE. ELYRIA, OHIO

SURVEYED BY: BRENT D. ANDERSON

CLOSURE: .00:10,000

MAP PAGE(S): 4-00-007-D

APPROVED BY: RRM DATE: 6-26-13

SCALE: 1" = 50' PRIOR INST.: DV 1109/128