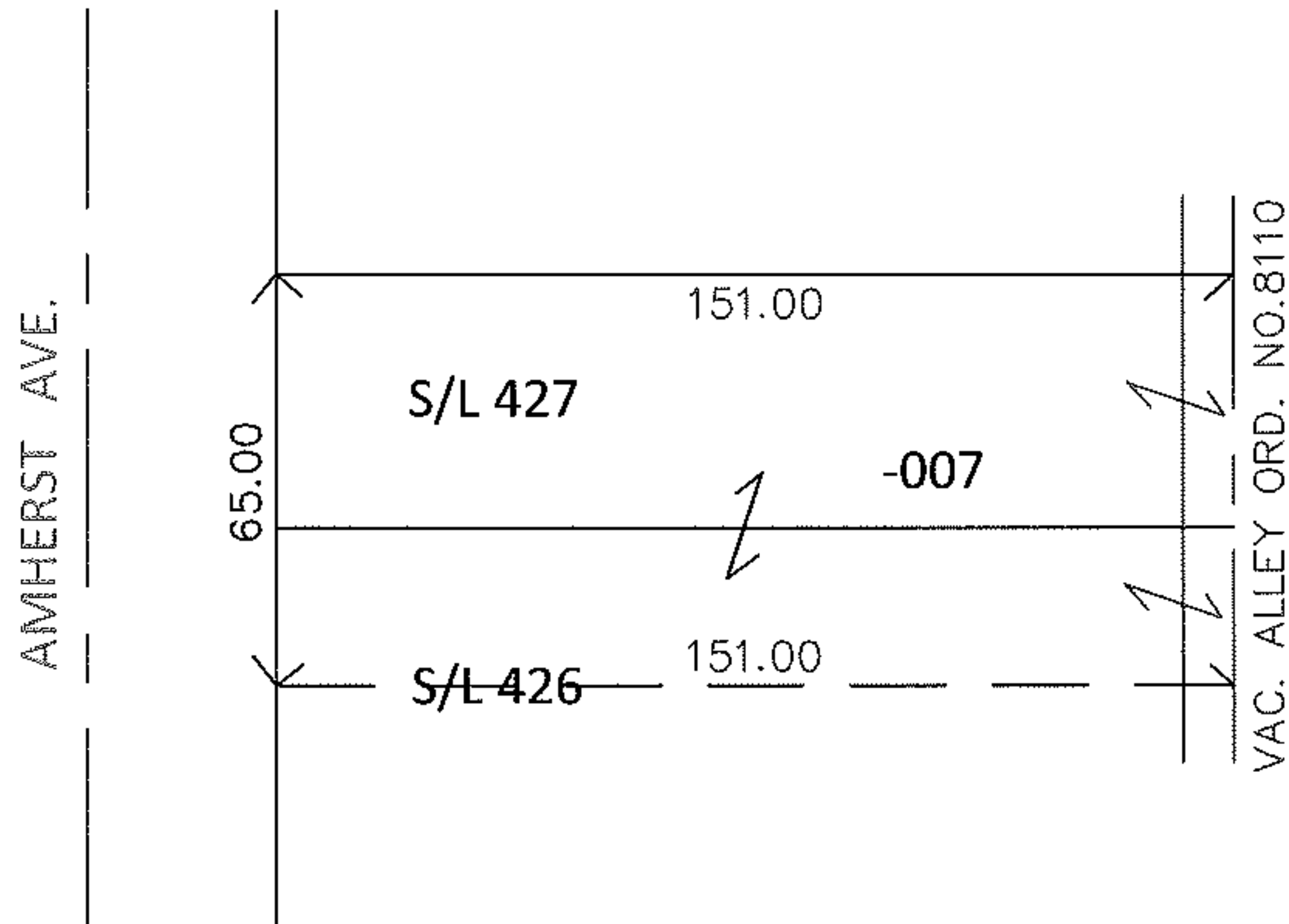
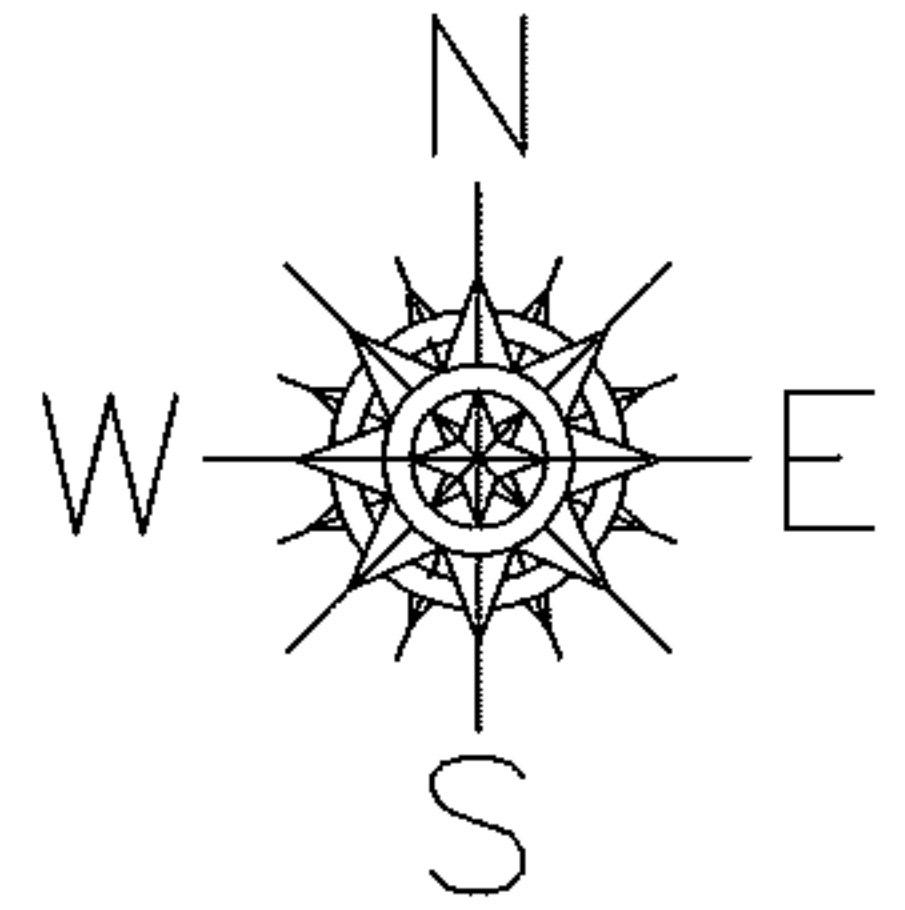


PARENT PARCEL: 02-01-003-237-007

CHILD PARCEL: _____

13-02752-A

STARTING POINT: S/L 427 & PART OF S/L 426 IN LORAIN STONE CO.'S 2ND SUB. (VOL. 6 PG. 37)



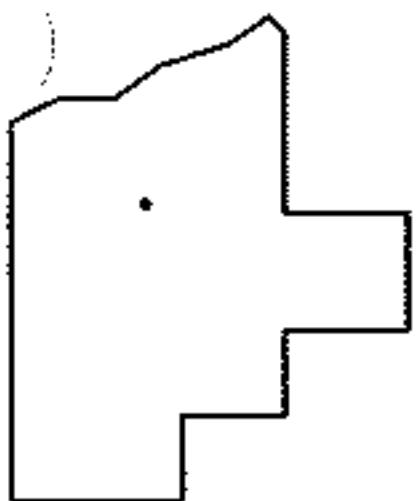
DEPTH CORRETION

02-01-003-237-007

151

65 X ~~143~~

PER DEED & VAC.ORD.8110



SPLITS/DEEDS PROCESSED

LORAIN COUNTY TAX MAP DEPARTMENT
226 MIDDLE AVE. ELYRIA, OHIO

SURVEYED BY: N/A

CLOSURE: N/A

MAP PAGE(S): 2-01-003-1

APPROVED BY: RRM DATE: 6-26-13

SCALE: 1" = 50' PRIOR INST.: 20080249219