

PARENT PARCEL: 09-00-086-111-006

CHILD PARCEL: 09-00-086-111-022 & -023

STARTING POINT: EAST LINE OF S/L 17 IN H. VIETS ADD. V. 1 PG. 38

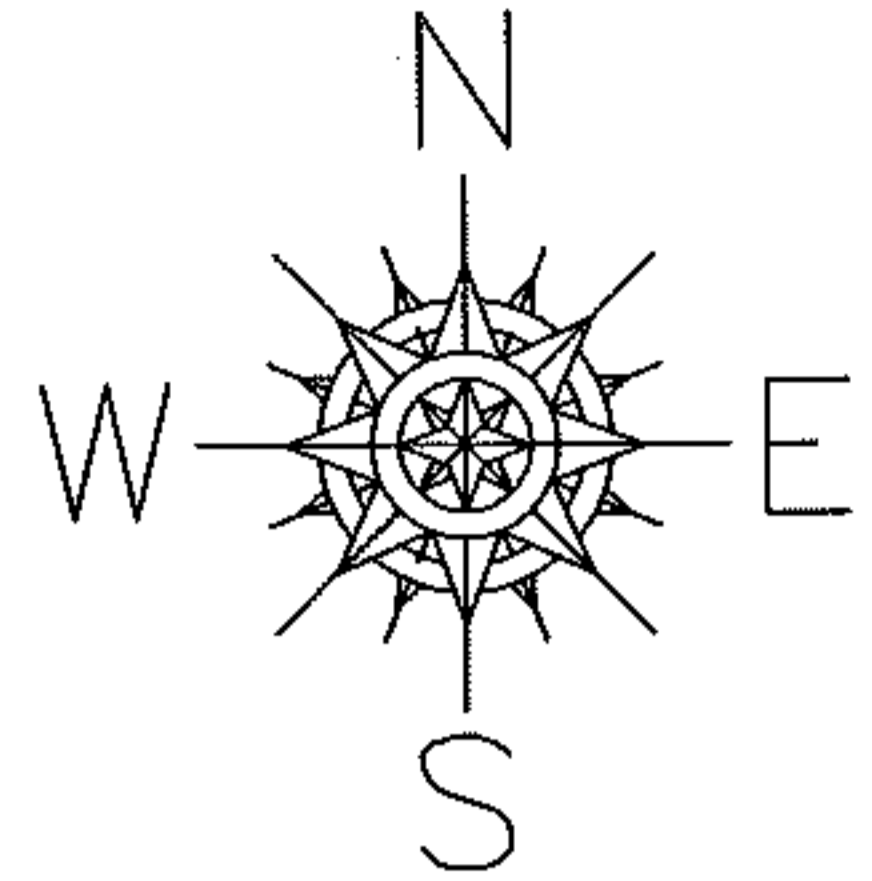
NO. 09-02750

SPLIT

~~09-00-086-111-006~~
~~66 X ?~~

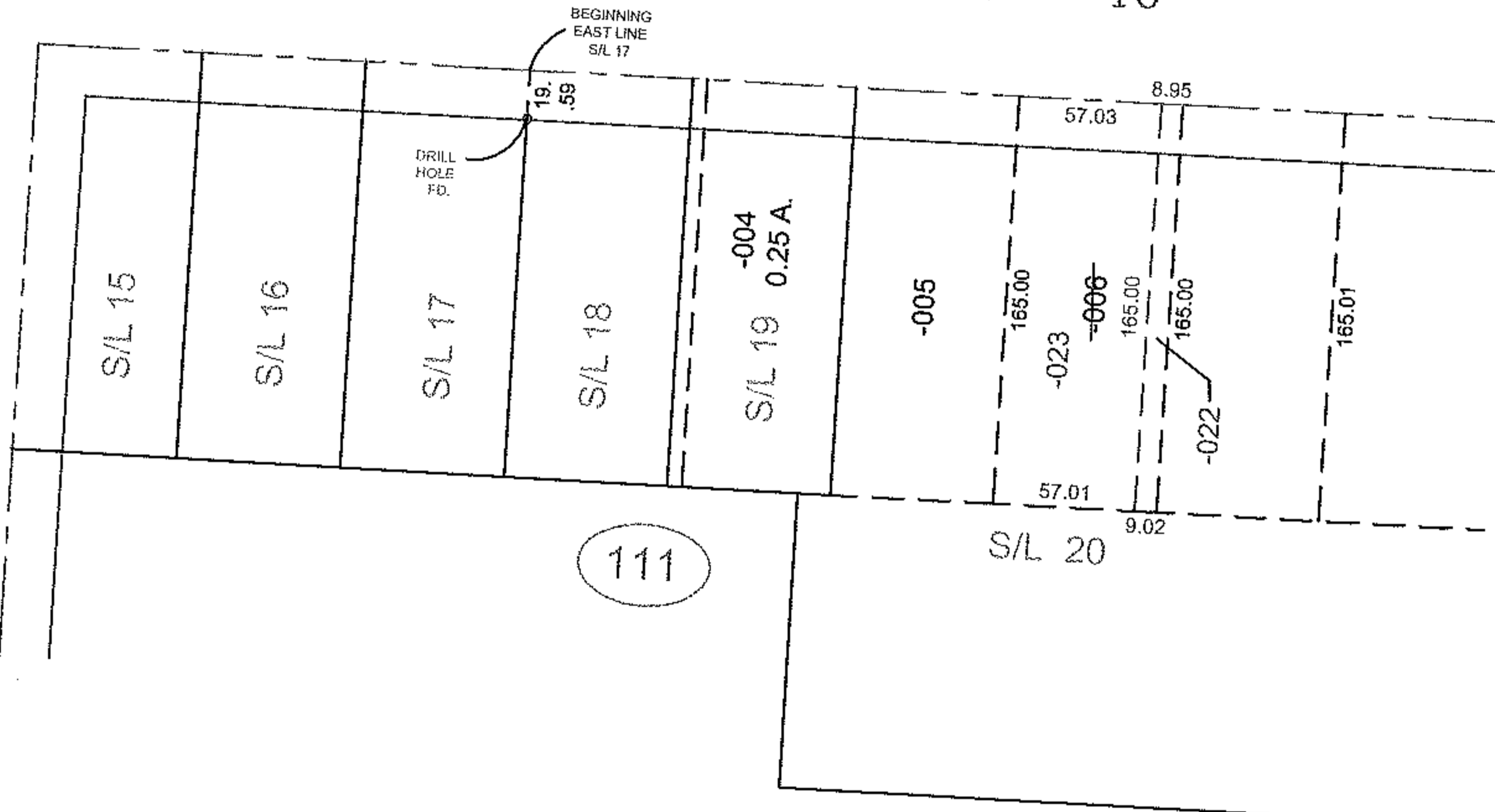
09-00-086-111-022
8.95 X 165.00

09-00-086-111-023
57.03 X 165.00



GROVELAND ST. 40'

SOUTH PARK ST. 40'



SPLITS/DEEDS PROCESSED

LORAIN COUNTY TAX MAP DEPARTMENT
226 MIDDLE AVE. ELYRIA, OHIO

SURVEYED BY: PATRICK A. MCGANNON

CLOSURE: .001 : 10.000

MAP PAGE(S): 9-00-086-B

APPROVED BY: TJS DATE: 8/3/10

SCALE: 1" = 100 PRIOR INSTRUMENT: DV XXXX/XXX