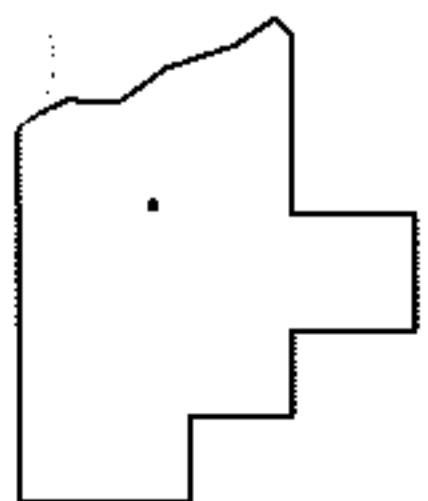
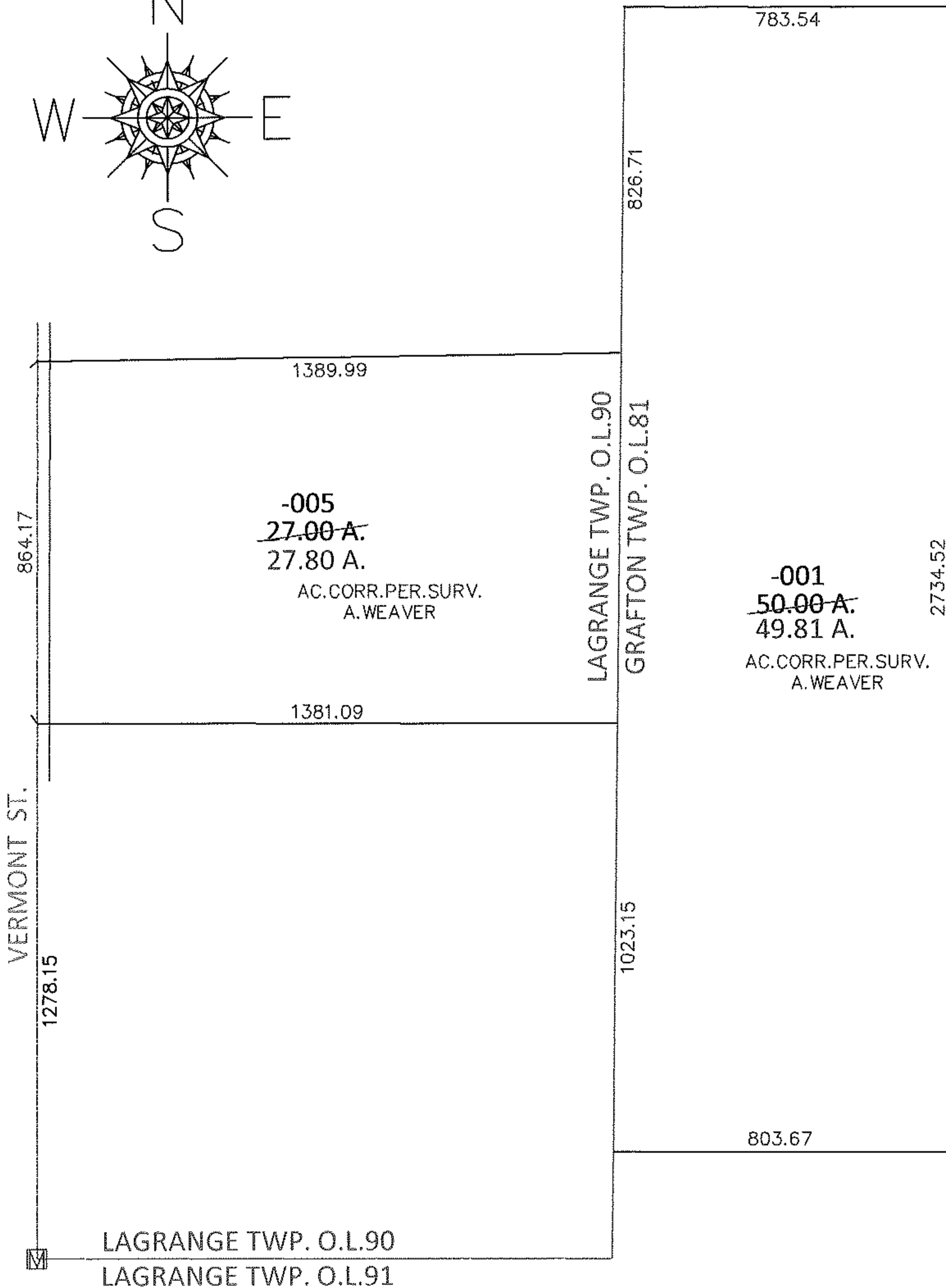
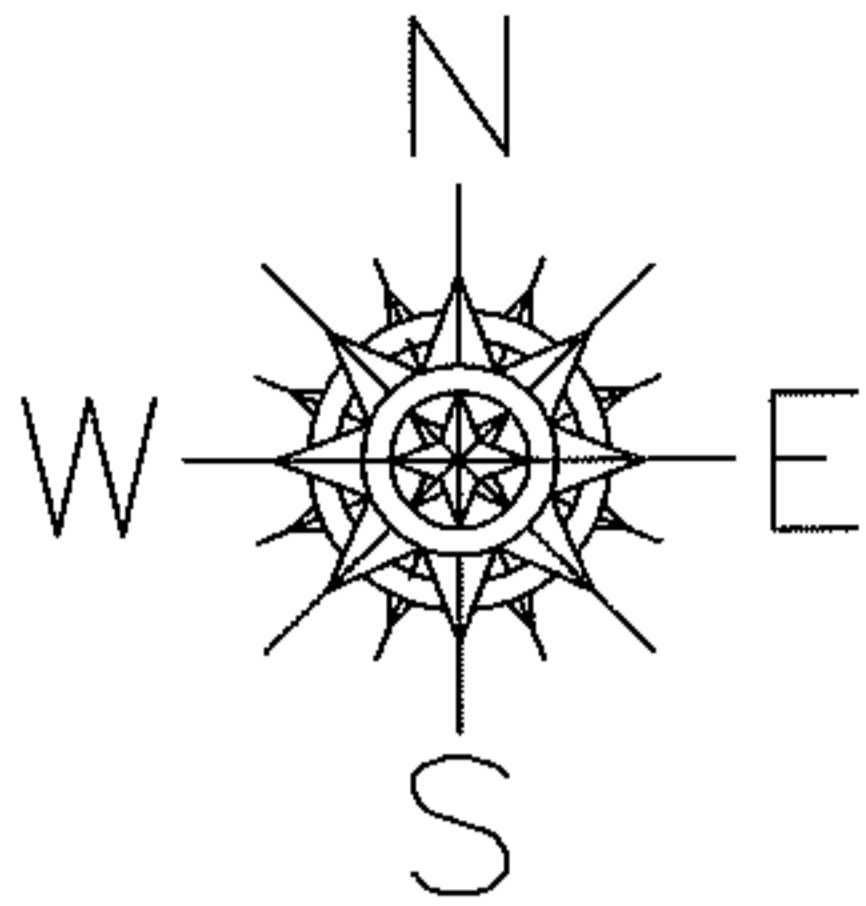


PARENT PARCEL: 15-00-090-000-005, 16-00-081-000-001

CHILD PARCEL: _____

13-02747-X

STARTING POINT: AT A MON BOX AT THE INTERSECTION OF SOUTH LINE OF O.L.90 AND C/L OF VERMONT ST.



SPLITS/DEEDS PROCESSED

LORAIN COUNTY TAX MAP DEPARTMENT
226 MIDDLE AVE. ELYRIA, OHIO

SURVEYED BY: ADAM E. WEAVER

CLOSURE: .01:10,000

MAP PAGE(S): 15-H, 16-E

APPROVED BY: RRM DATE: 6-18-13

SCALE: 1" = 400 PRIOR INST.: 20050112635