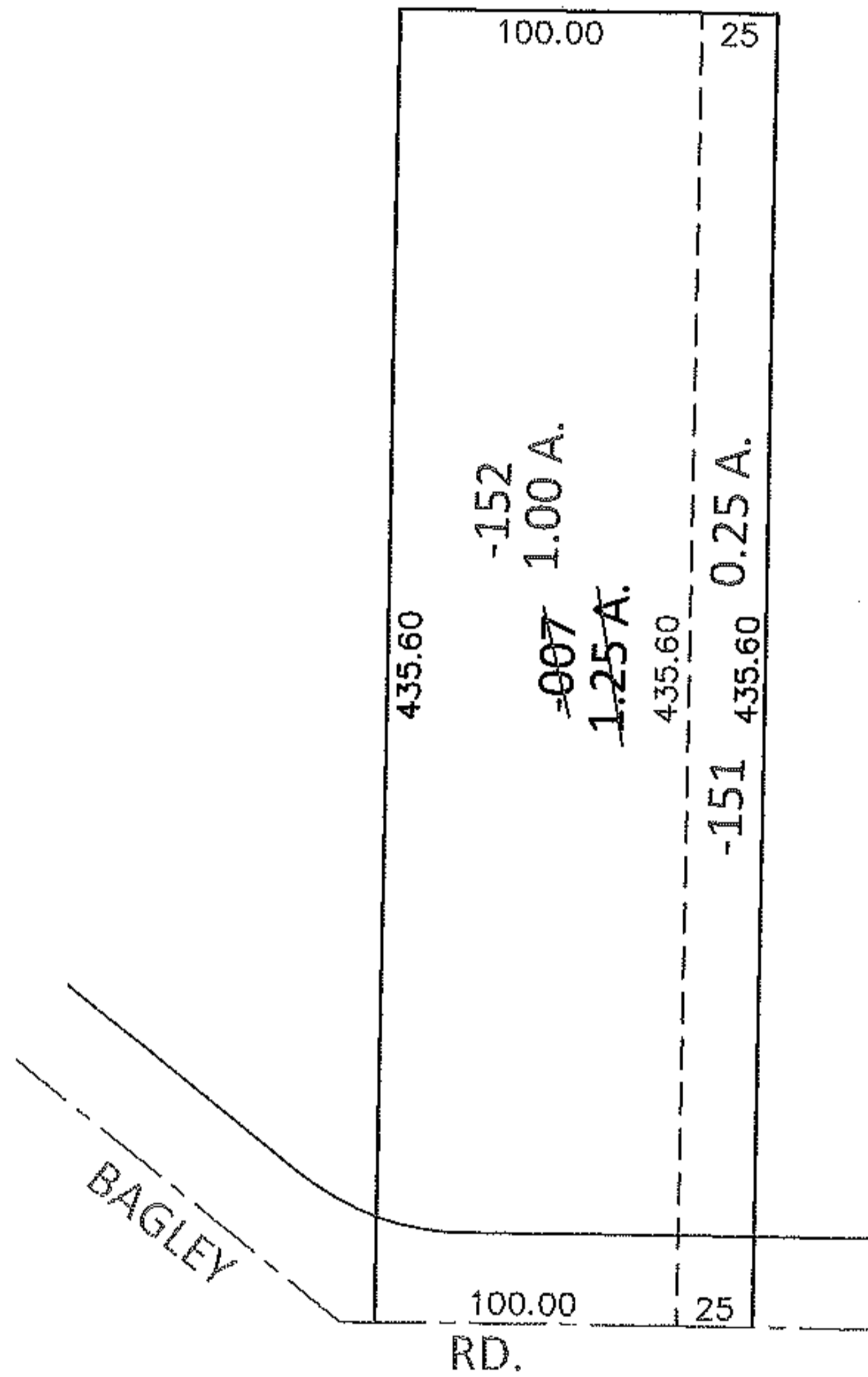
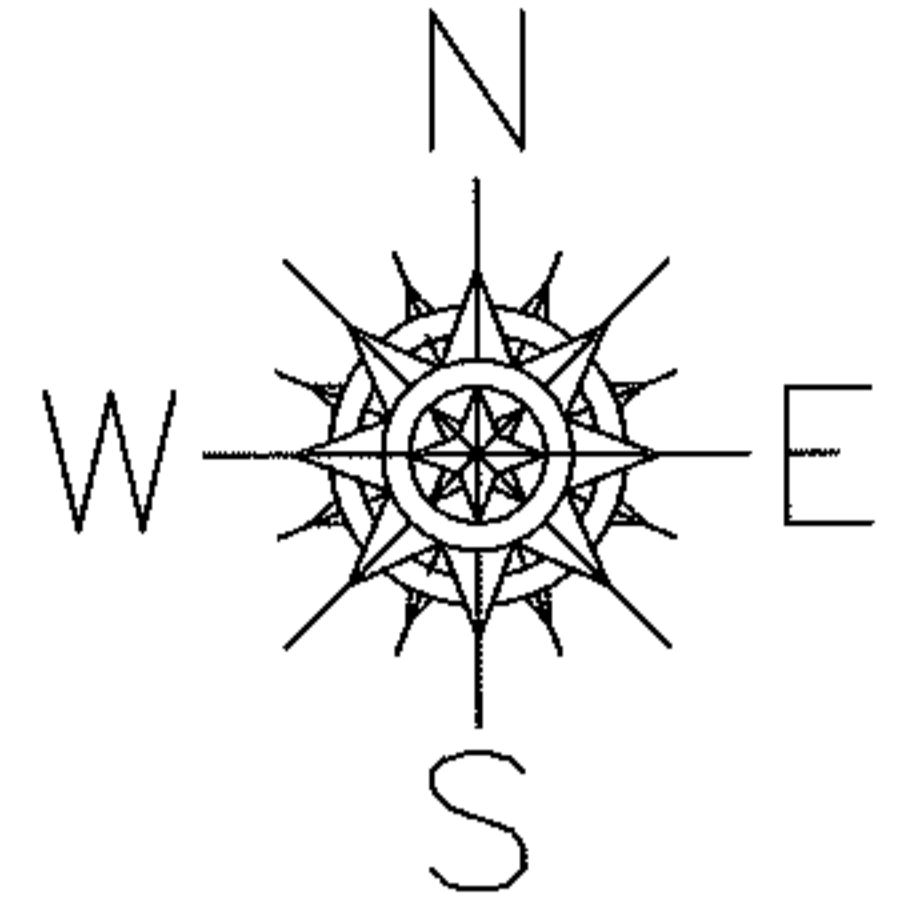


PARENT PARCEL: 07-00-011-102-007

CHILD PARCEL: 07-00-011-102-151, -152

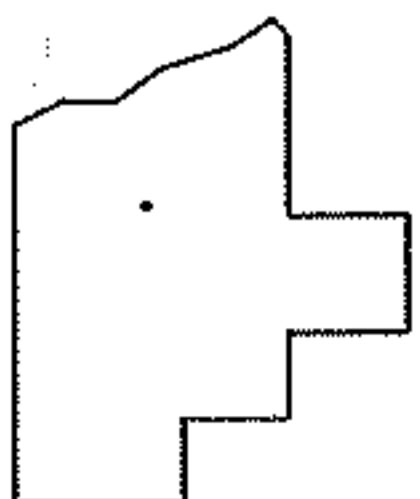
13-02745-U

STARTING POINT: SOUTHEAST CORNER OF LAND CONVEYED TO ORVILLE R. & MARGARET L. LYNDES (DV 332/260)



**UNCOMBINATION**

PER PRIOR DEEDS  
TO REMOVE UPDATE LEGAL  
FOR 2 LEGALS, 1 PARCEL NO.



**SPLITS/DEEDS PROCESSED**

LORAIN COUNTY TAX MAP DEPARTMENT  
226 MIDDLE AVE. ELYRIA, OHIO

SURVEYED BY: C.T. BIGGS

CLOSURE: .00:10.000

MAP PAGE(S): 7-00-011-B

APPROVED BY: RRM DATE: 6-18-13

SCALE: 1"= 100 PRIOR INST.: 20100326397