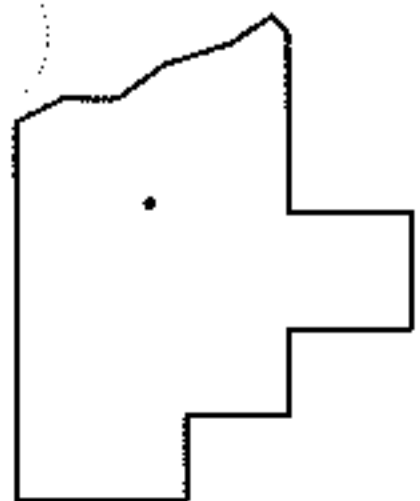
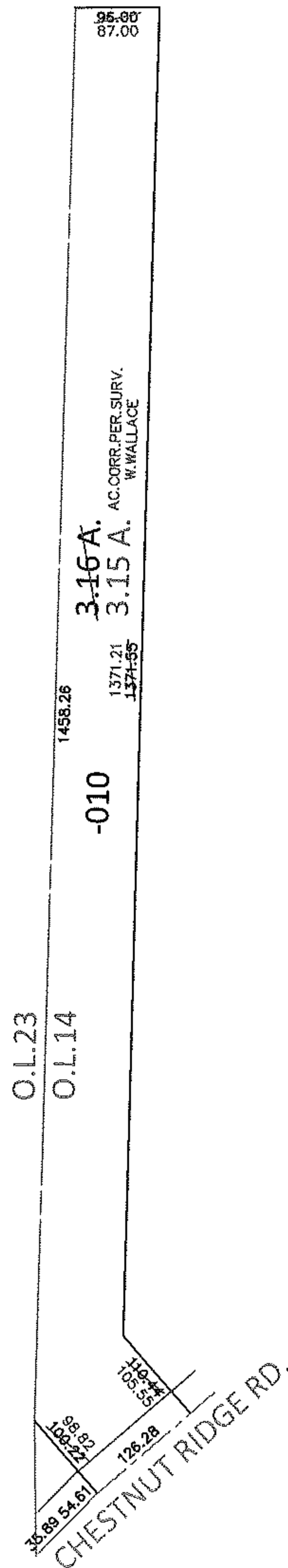
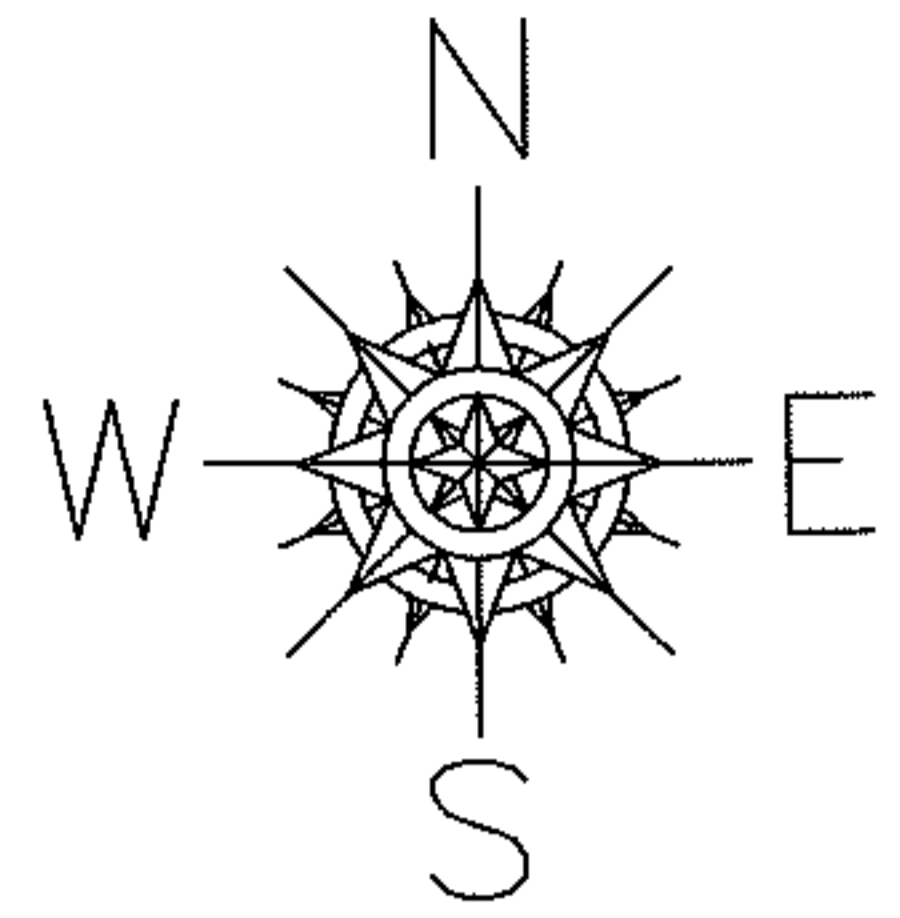


PARENT PARCEL: 07-00-014-101-010

CHILD PARCEL: \_\_\_\_\_

13-02742-A

STARTING POINT: INTERSECTION OF C/L OF CHESTNUT RIDGE RD. AND WEST LINE OF O.L.14



**SPLITS/DEEDS PROCESSED**

LORAIN COUNTY TAX MAP DEPARTMENT  
226 MIDDLE AVE. ELYRIA, OHIO

SURVEYED BY: WILLIAM R. WALLACE

CLOSURE: .01:10,000

MAP PAGE(S): 7-00-014-A

APPROVED BY: RRM DATE: 6-6-13

SCALE: 1" = 200 PRIOR INST.: 20120418994