

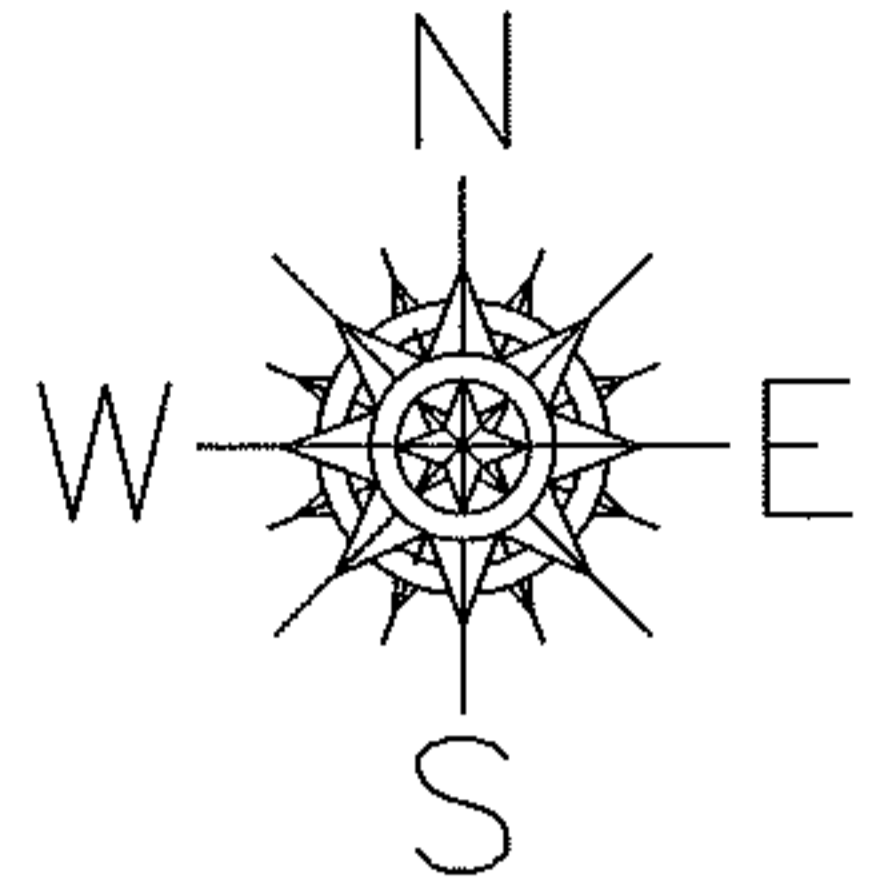
RASTER

PARENT PARCEL: 15-00-056-101-007, ~~056-057~~

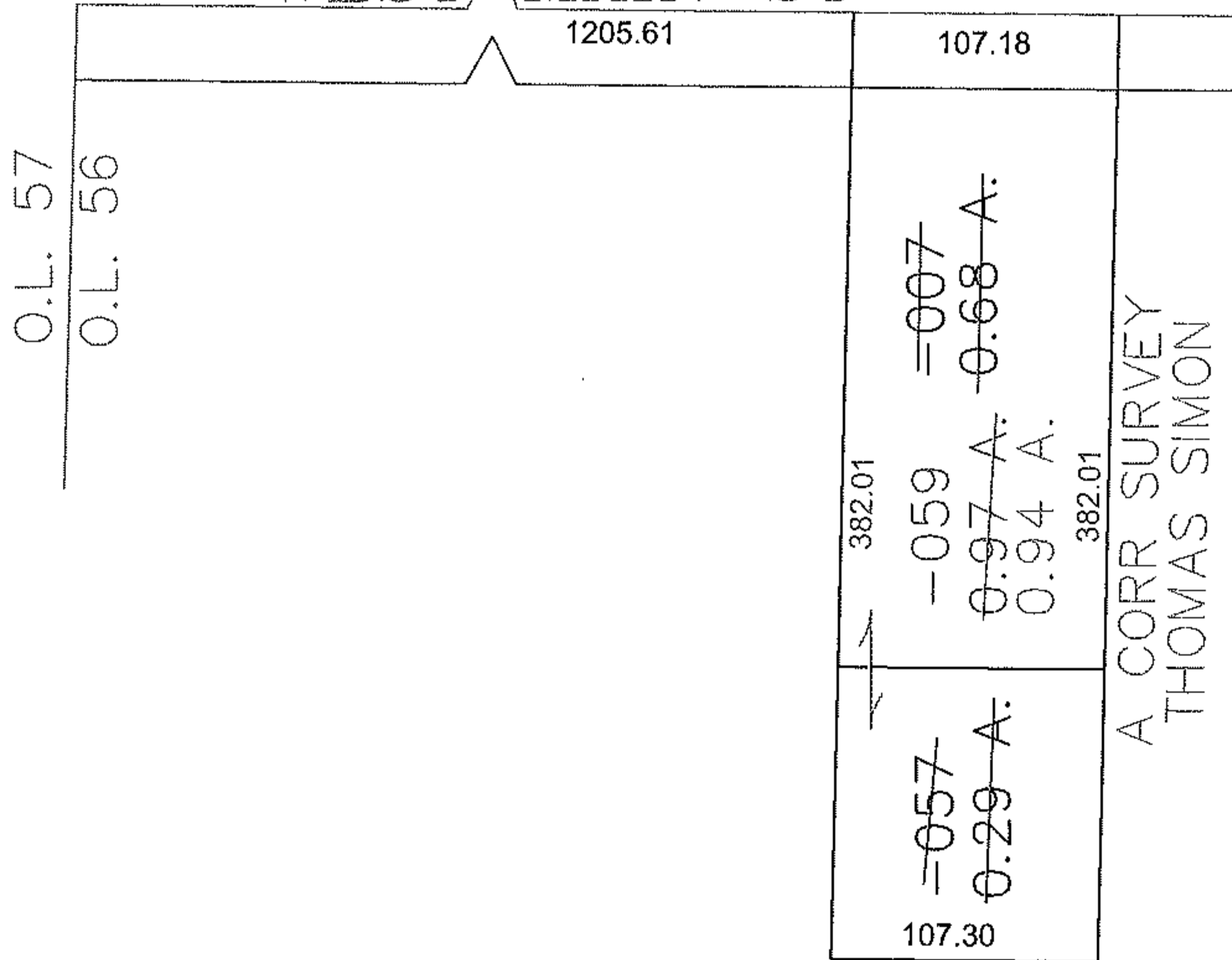
CHILD PARCEL: 15-00-056-101-059

STARTING POINT: CENTERLINE OF WEST MAIN ST & O.L. 56

09-02740



WEST MAIN ST



SPLITS/DEEDS PROCESSED

LORAIN COUNTY TAX MAP DEPARTMENT
226 MIDDLE AVE. ELYRIA, OHIO

SURVEYED BY: THOMAS SIMON

CLOSURE: 0.00 : 10.000

MAP PAGE(S): 15-00-056-A

APPROVED BY: JAH DATE: 9-16-09

SCALE: 1" = 100' PRIOR INSTRUMENT: DV 1072/39