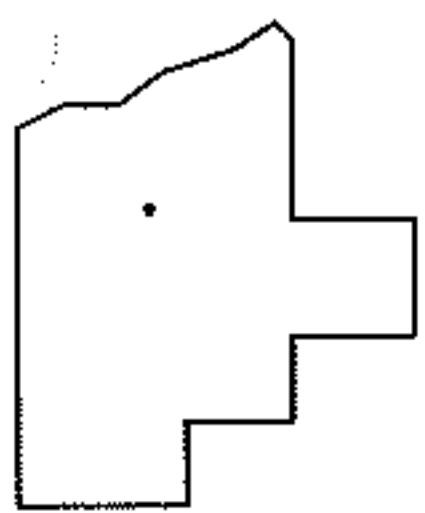
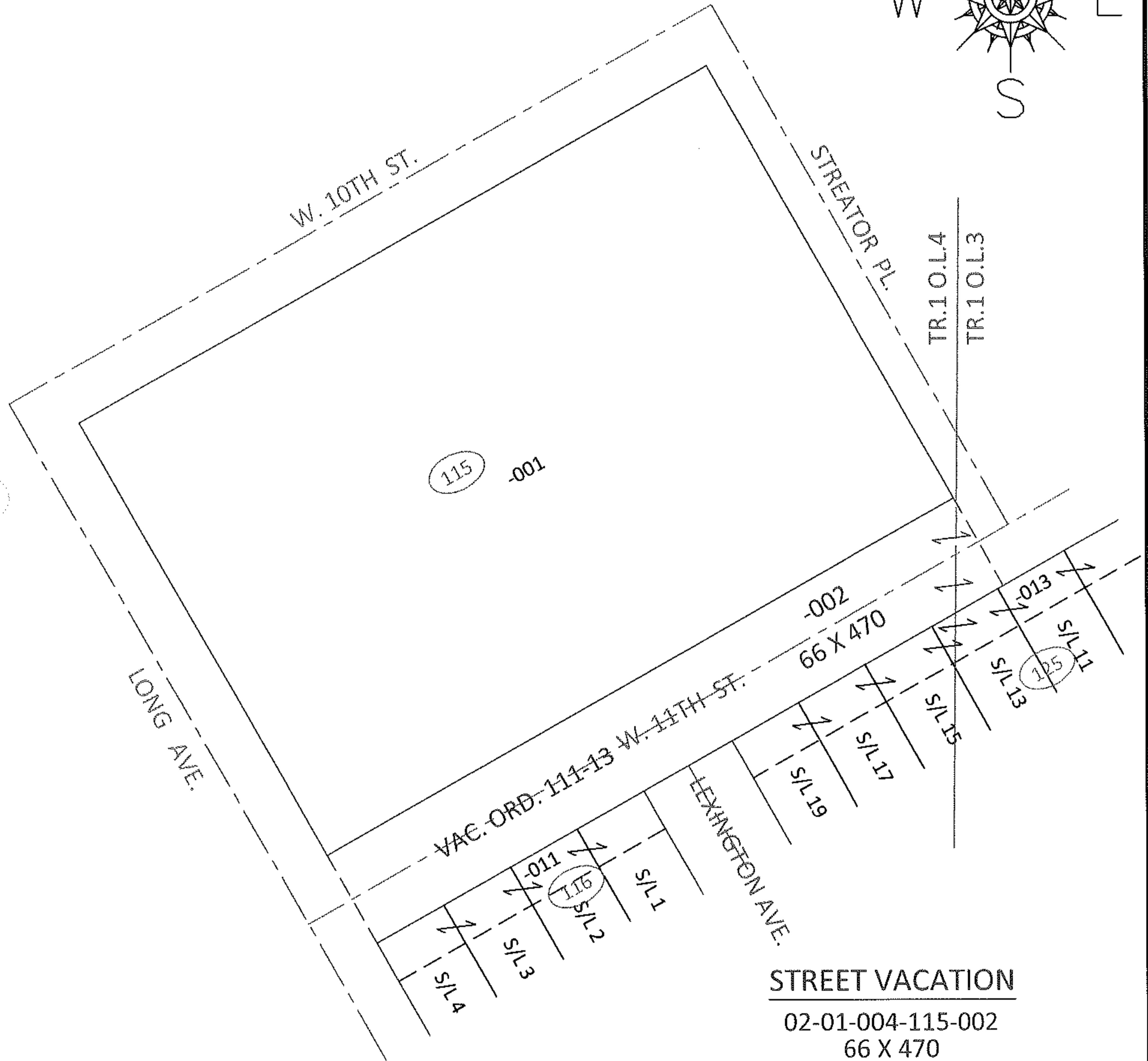
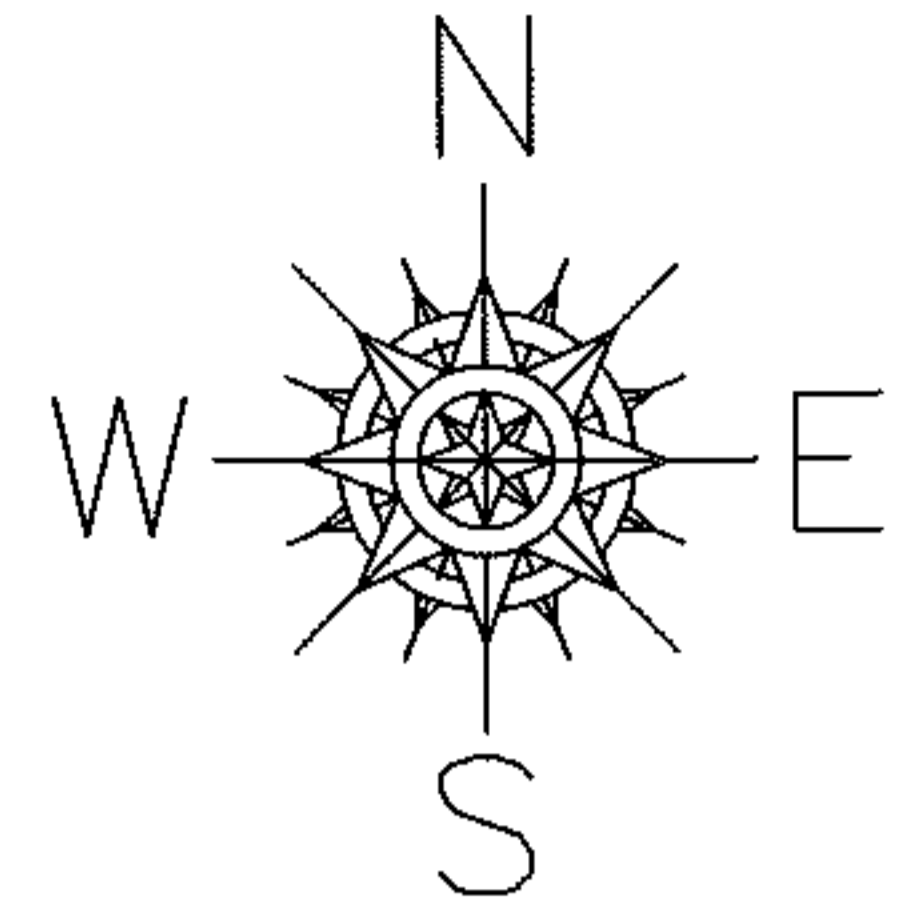


PARENT PARCEL: ADD TO DUP.

CHILD PARCEL: 02-01-004-115-002

STARTING POINT: N/A

13-02739-V



**SPLITS/DEEDS PROCESSED**

LORAIN COUNTY TAX MAP DEPARTMENT  
226 MIDDLE AVE. ELYRIA, OHIO

SURVEYED BY: N/A

CLOSURE: N/A

MAP PAGE(S): 2-01-003-C, 2-01-004-B

APPROVED BY: RRM DATE: 5-31-13

SCALE: 1"= 100 PRIOR INST.: ORD 111-13