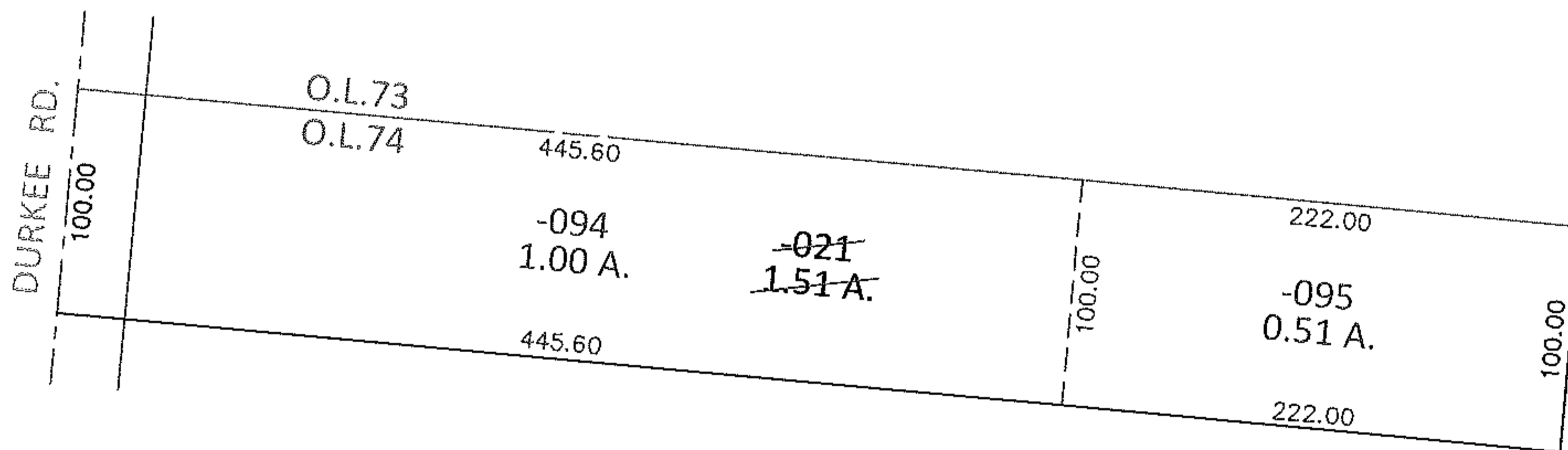
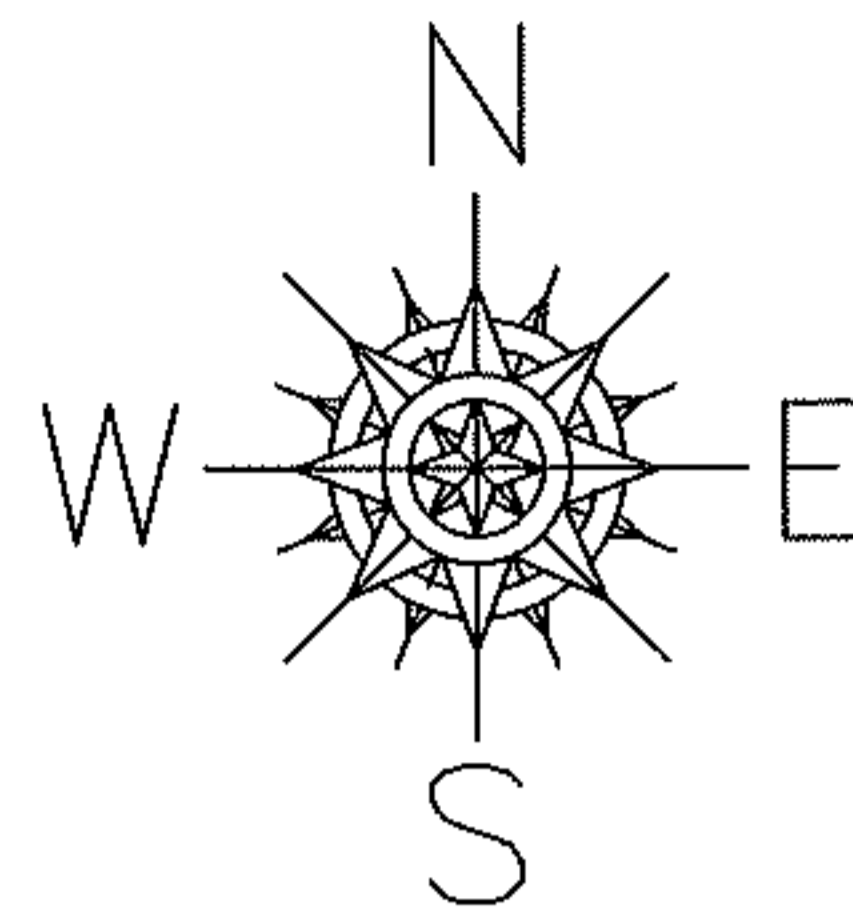


PARENT PARCEL: 11-00-074-000-021

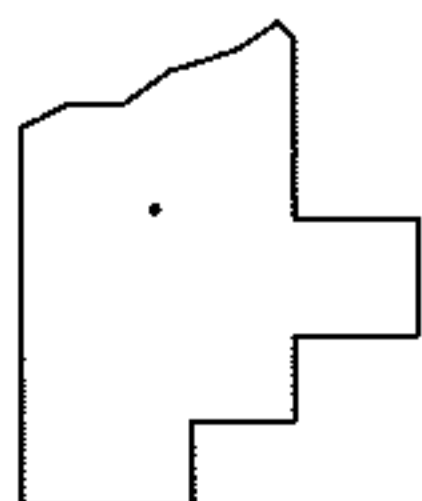
CHILD PARCEL: 11-00-074-000-094, -095

13-02738-X

STARTING POINT: INTERSECTION OF C/L OF DURKEE RD. AND NORTH LINE OF O.L.74



UNCOMBINATION
 PER PRIOR DEEDS
 TO REMOVE UPDATE LEGAL FOR
 2 LEGALS, 1 PARCEL NO.



SPLITS/DEEDS PROCESSED

LORAIN COUNTY TAX MAP DEPARTMENT
226 MIDDLE AVE. ELYRIA, OHIO

SURVEYED BY: N/A

CLOSURE: .00:10,000

MAP PAGE(S): 11-00-074-A

APPROVED BY: RRM DATE: 5-30-13

SCALE: 1"= 100 PRIOR INST.: 20000049914