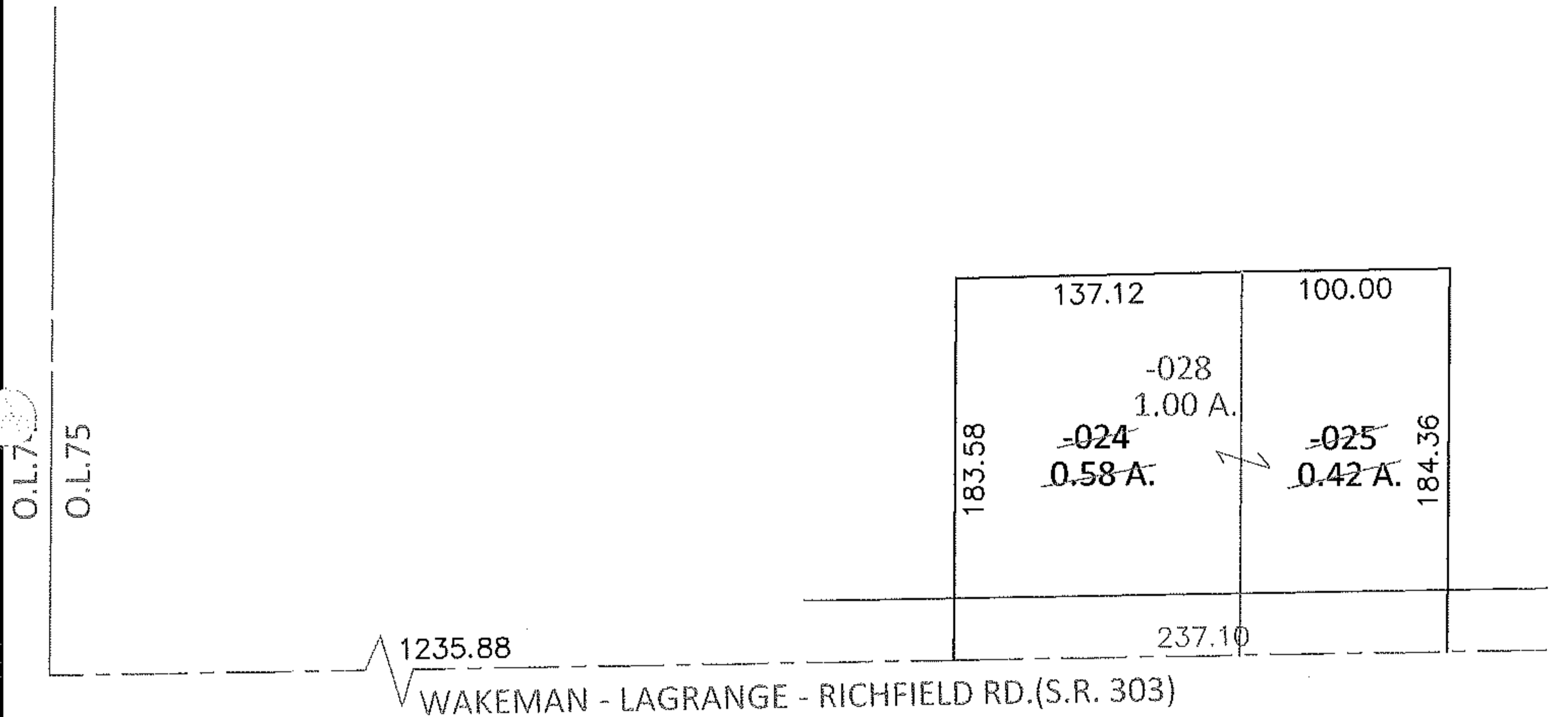
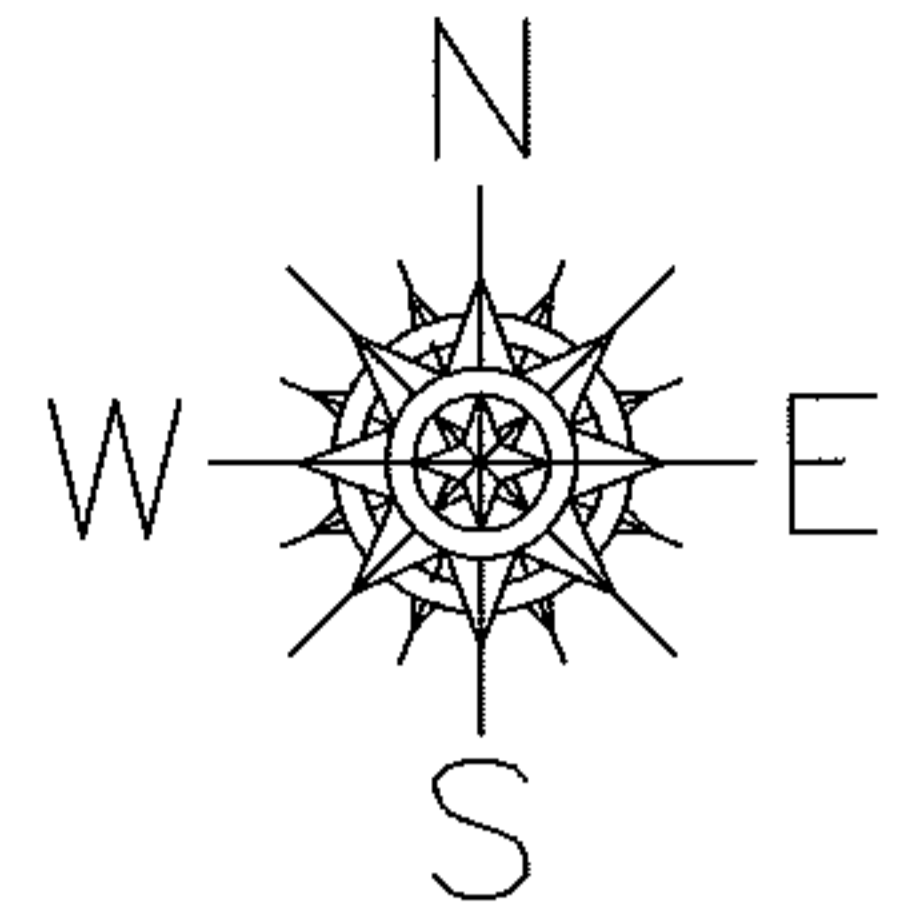


PARENT PARCEL: 14-00-075-000-024, -025

CHILD PARCEL: 14-00-075-000-028

13-02728-C

STARTING POINT: INTERSECTION OF C/L OF S.R.303 AND WEST LINE OF O.L.75



COMBINATION CORRECTION

PER SURV. BY D.HAYWOOD
TO REMOVE UPDATE LEGAL
FOR 1 LEGAL, 2 PARCEL NOS.

SPLITS/DEEDS PROCESSED

LORAIN COUNTY TAX MAP DEPARTMENT
226 MIDDLE AVE. ELYRIA, OHIO

SURVEYED BY: DALE R. HAYWOOD

CLOSURE: .00:10,000

MAP PAGE(S): 14-00-075-B

APPROVED BY: RRM DATE: 5-9-13

SCALE: 1"= 100 PRIOR INST.: 20070193719