

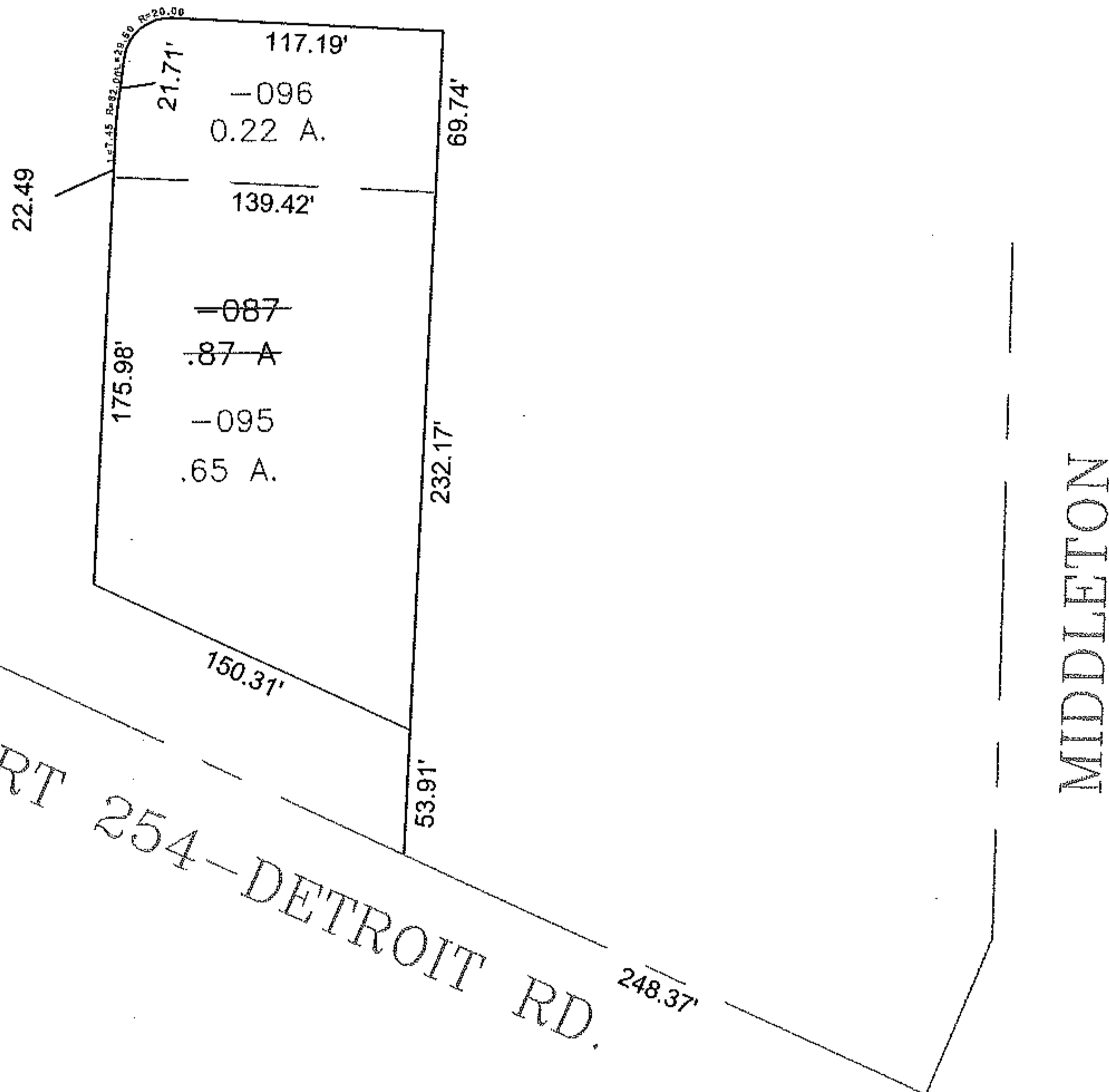
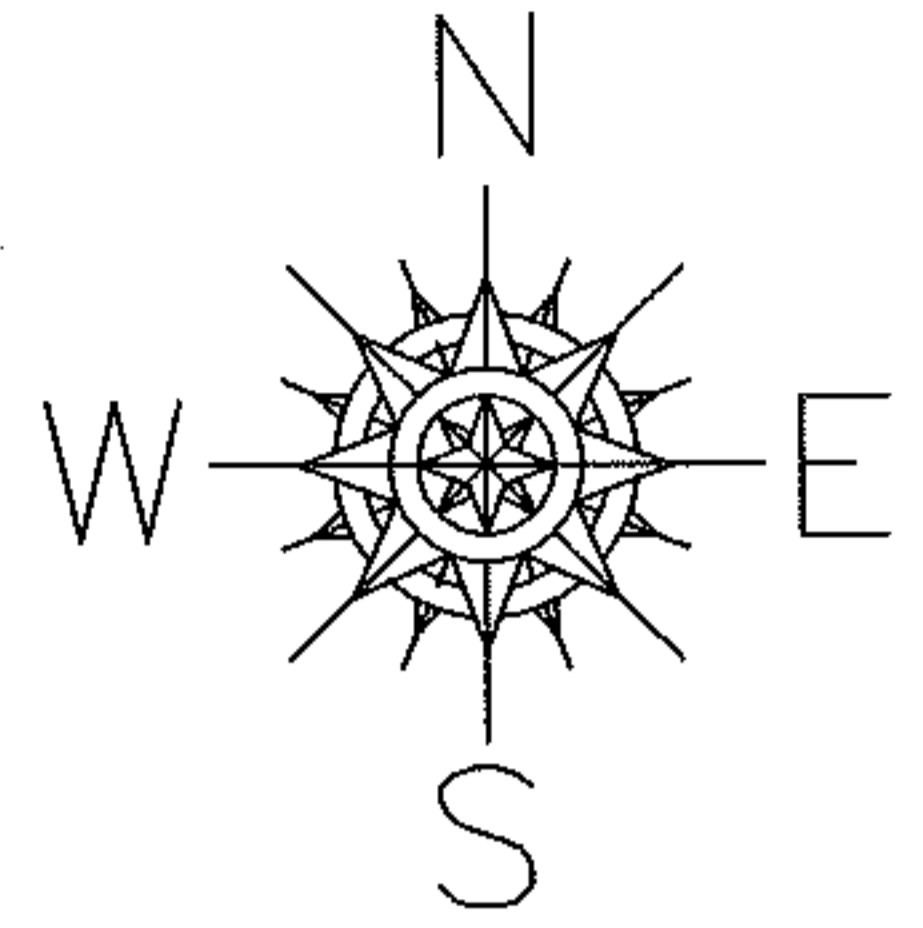
RASTER

PARENT PARCEL: 04-00-015-103-087

CHILD PARCEL: 04-00-015-103-095, 096

STARTING POINT: INT OF C/L OF DETROIT ROAD AND MIDDLETON

09-02716



ST. RT 254--DETROIT RD.

MIDDLETON

SPLITS/DEEDS PROCESSED

LORAIN COUNTY TAX MAP DEPARTMENT
226 MIDDLE AVE. ELYRIA, OHIO

SURVEYED BY: DAVID ELWELL
 CLOSURE: 1:10000
 MAP PAGE(S): 04-00-015-D
 APPROVED BY: MBK DATE: 07/08/2009
 SCALE: 1" = 100 PRIOR INSTRUMENT: 20080276951