

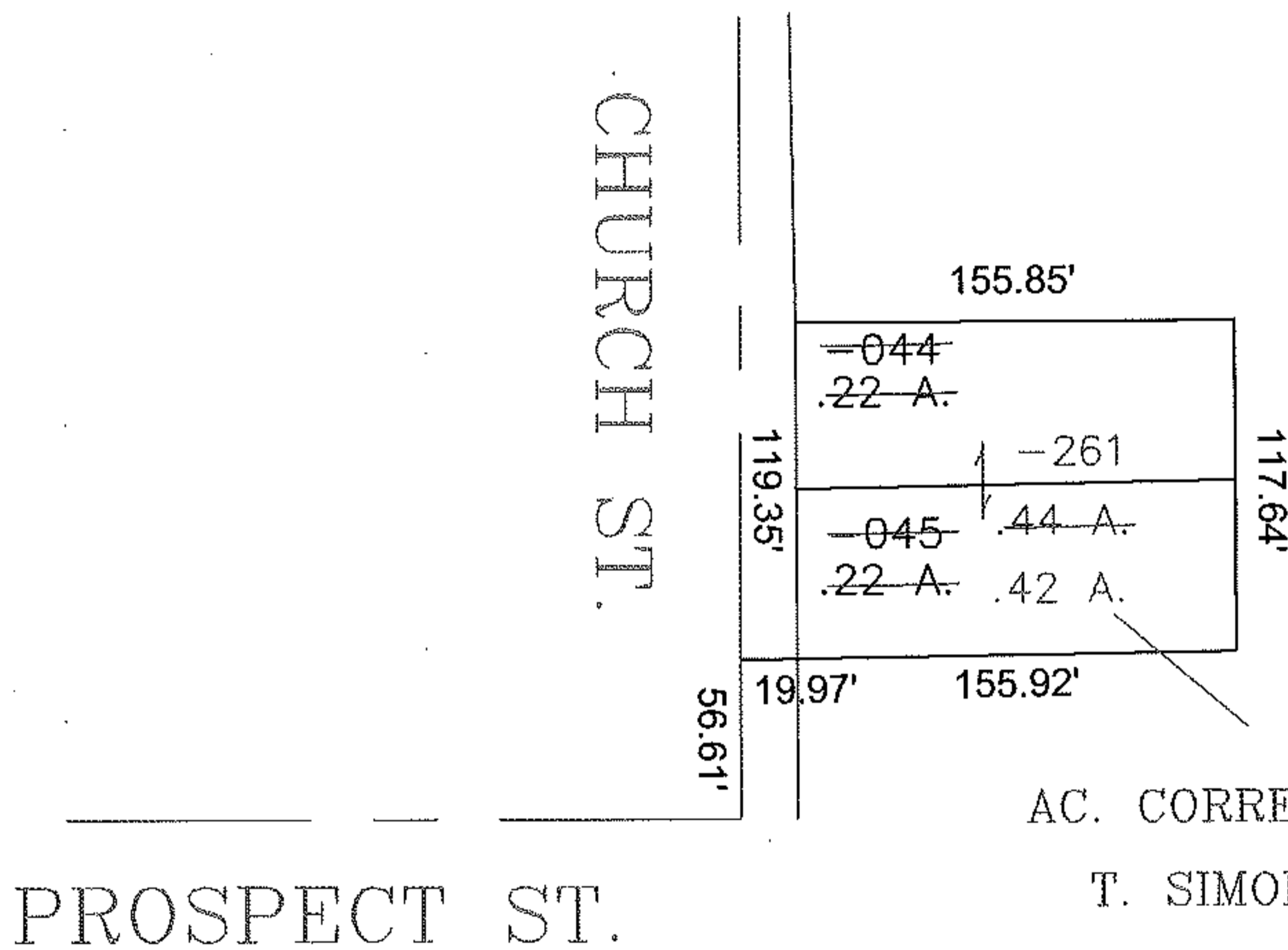
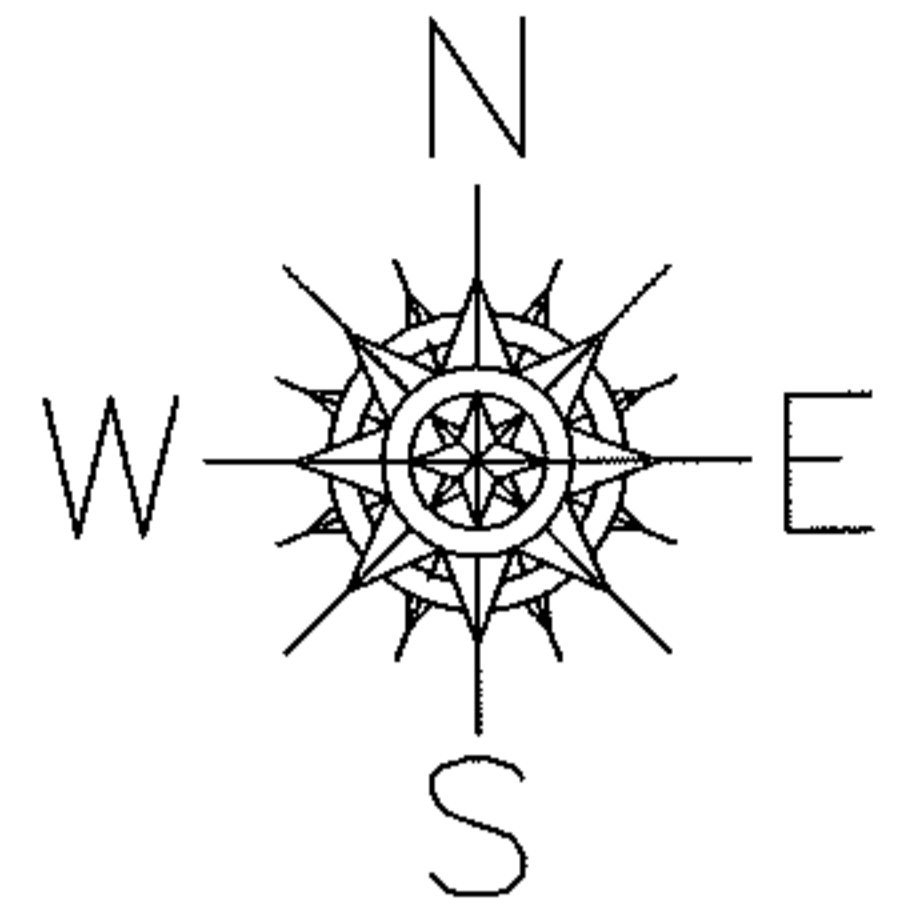
RASTER

PARENT PARCEL: 15-00-046-101-044, 045

CHILD PARCEL: 15-00-046-101-261

STARTING POINT: INT OF C/L OF PROSPECT STREET AND CHURCH STREET

09-02715



AC. CORRECTION PER
T. SIMON SURVEY

SPLITS/DEEDS PROCESSED

LORAIN COUNTY TAX MAP DEPARTMENT
226 MIDDLE AVE. ELYRIA, OHIO

SURVEYED BY: TOM SIMON

CLOSURE: 1:10000

MAP PAGE(S): 15-00-046-A

APPROVED BY: MBK DATE: 07/07/209

SCALE: 1" = 100 PRIOR INSTRUMENT: 20090291534