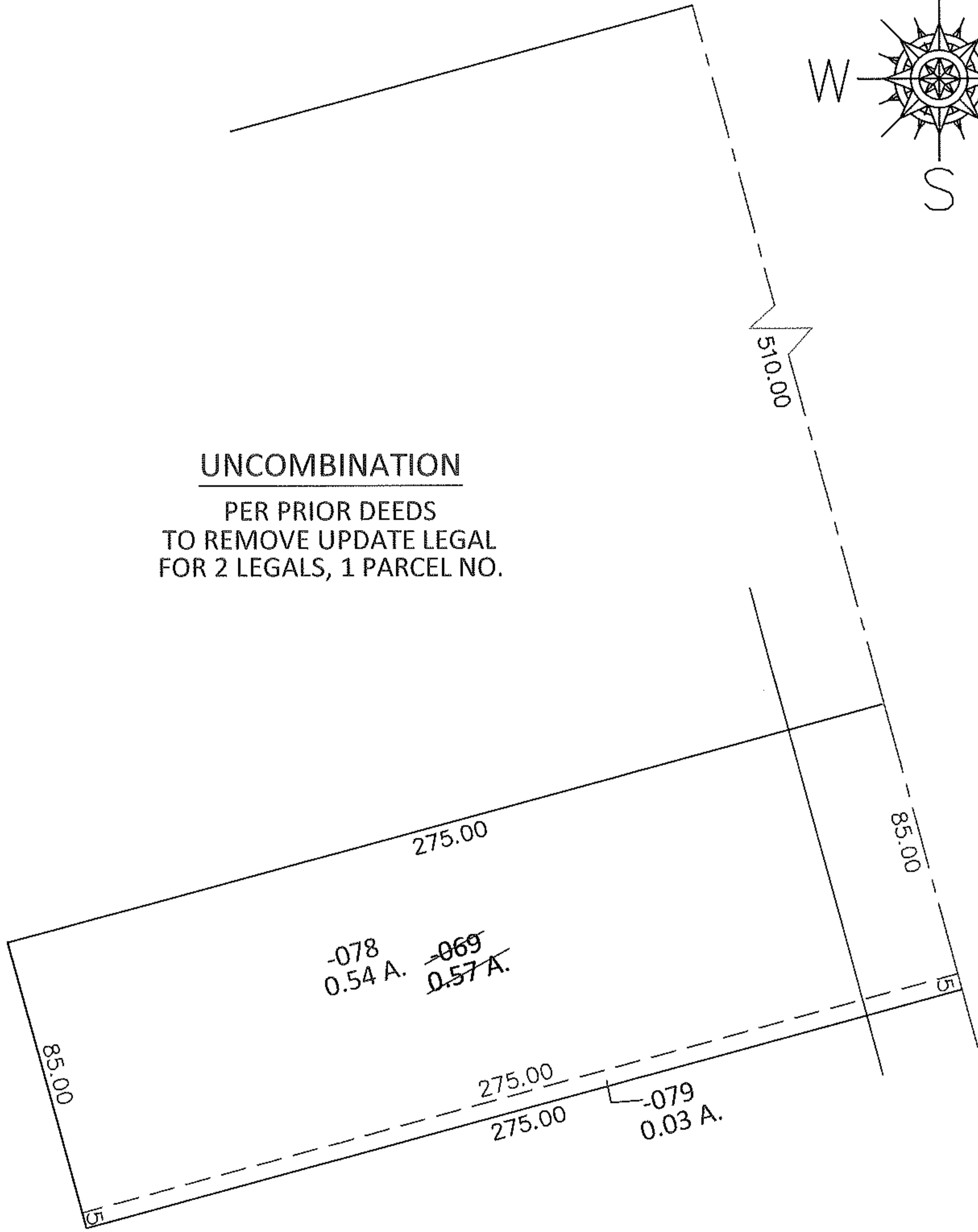
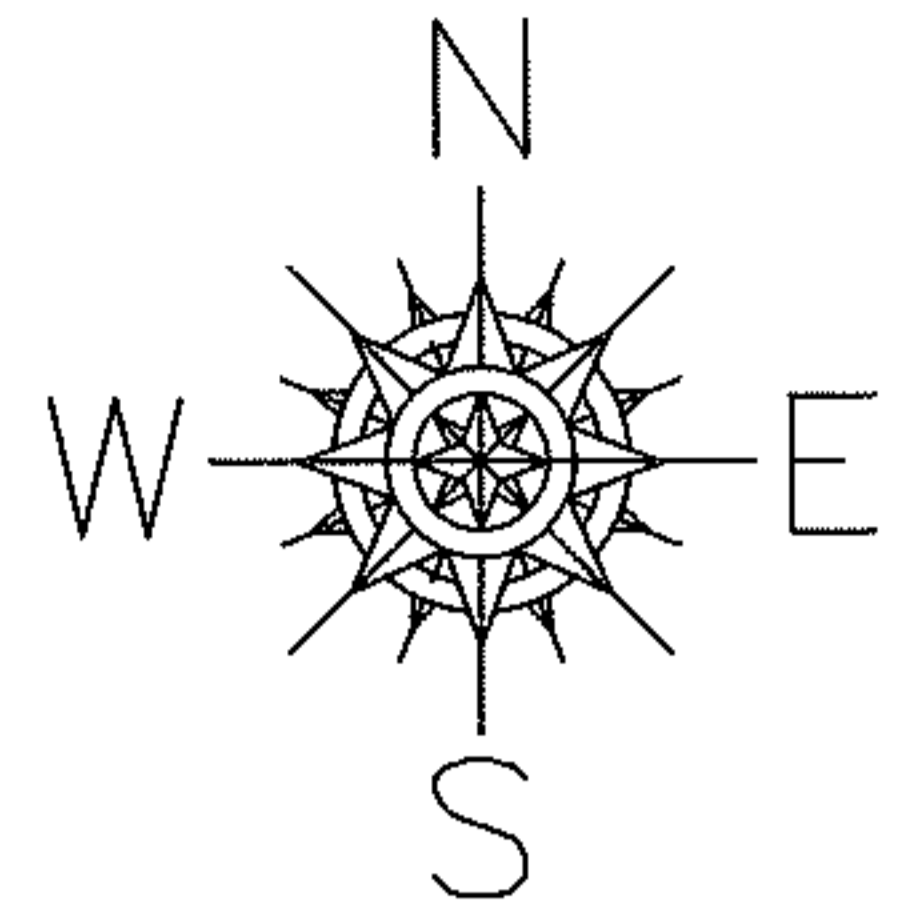


PARENT PARCEL: 06-24-017-102-069

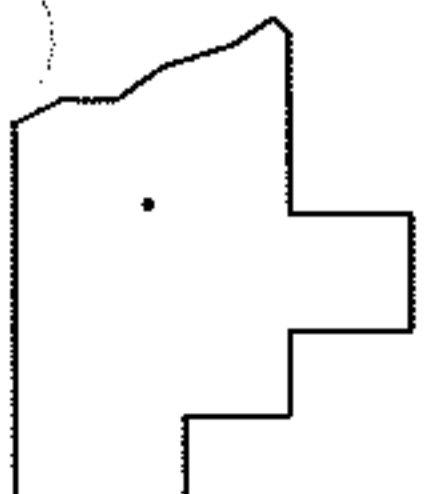
CHILD PARCEL: 06-24-017-102-078, -079

13-02710-U

STARTING POINT: SOUTHEAST CORNER OF LAND CONVEYED TO WM. SCHROEDER & KATHERINE SCHROEDER (DV 801/545)



UNCOMBINATION  
PER PRIOR DEEDS  
TO REMOVE UPDATE LEGAL  
FOR 2 LEGALS, 1 PARCEL NO.



SPLITS/DEEDS PROCESSED

LORAIN COUNTY TAX MAP DEPARTMENT  
226 MIDDLE AVE. ELYRIA, OHIO

SURVEYED BY: D.D. ANDRUS & K.E. MCCARTNEY

CLOSURE: .00:10,000

MAP PAGE(S): 6-91

APPROVED BY: RRM DATE: 4-22-13

SCALE: 1" = 50' PRIOR INST.: OR 737/293