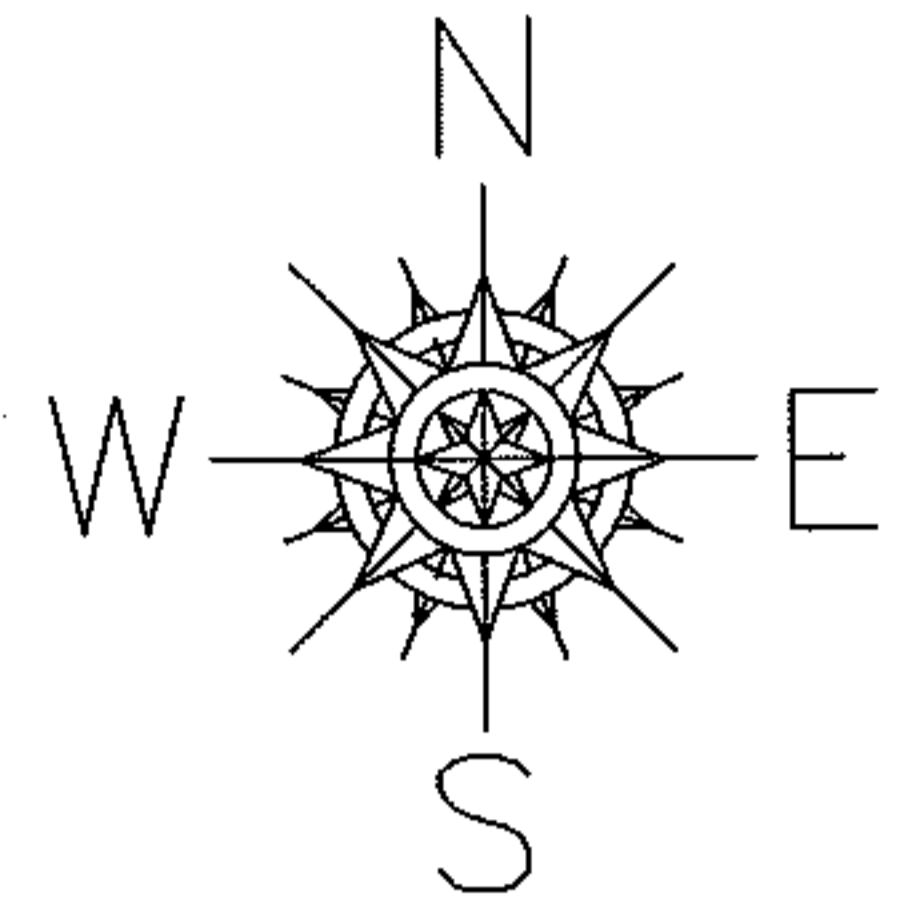
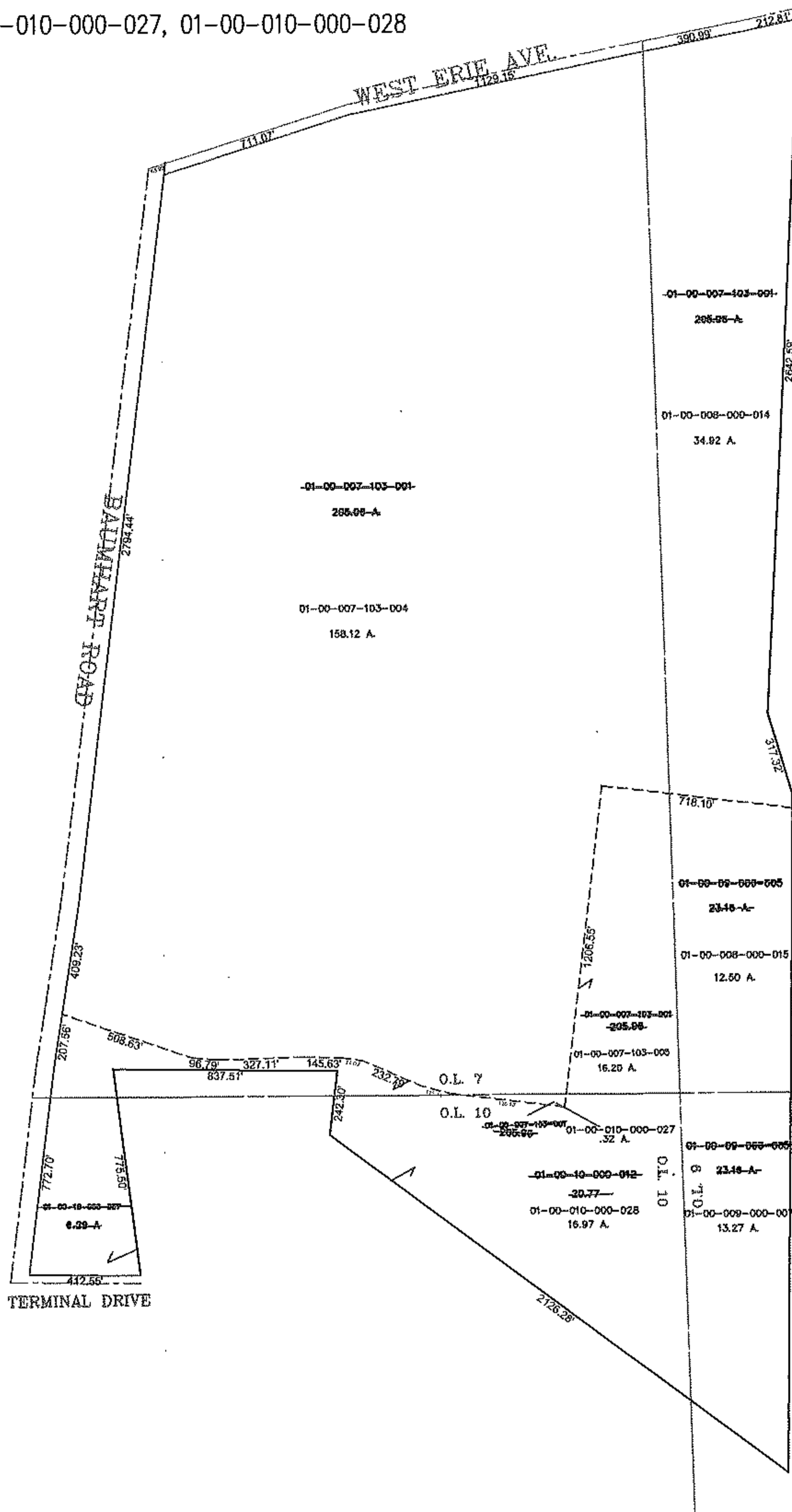


RASTER

PARENT PARCEL: 01-00-007-103-001, 01-00-009-000-005, 01-00-010-00-012, 007
CHILD PARCEL: 01-00-007-103-004, 005; 01-00-008-000-014, 015; 01-00-009-000-007*
STARTING POINT: C/L INTERSECTION OF BAUMHART AND WEST ERIE AVE.

09-02709

*01-00-010-000-027, 01-00-010-000-028



SPLITS/DEEDS PROCESSED

LORAIN COUNTY TAX MAP DEPARTMENT
226 MIDDLE AVE. ELYRIA, OHIO

SURVEYED BY: JOHN R. ALLEN
 CLOSURE: 0.00:10000
 MAP PAGE(S): 01-D
 APPROVED BY: MBK DATE: 6-19-09
 SCALE: 1" = 700 PRIOR INSTRUMENT: 20060181723