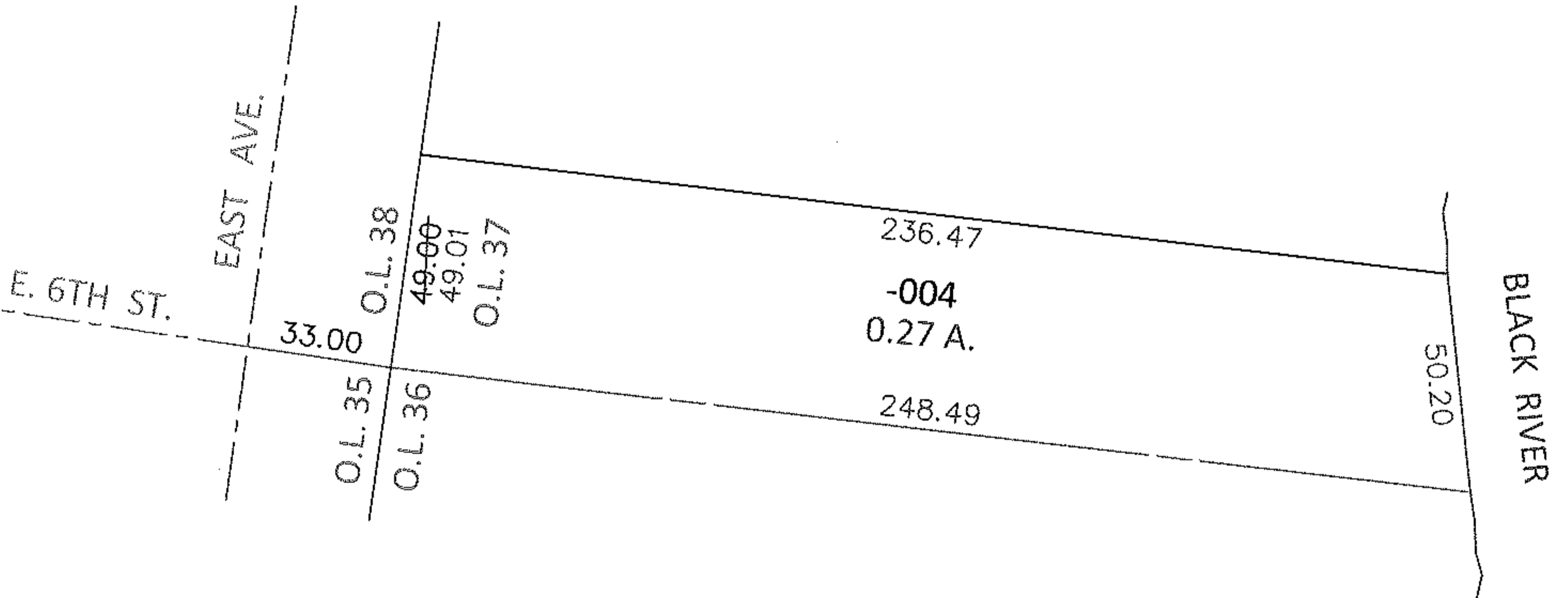
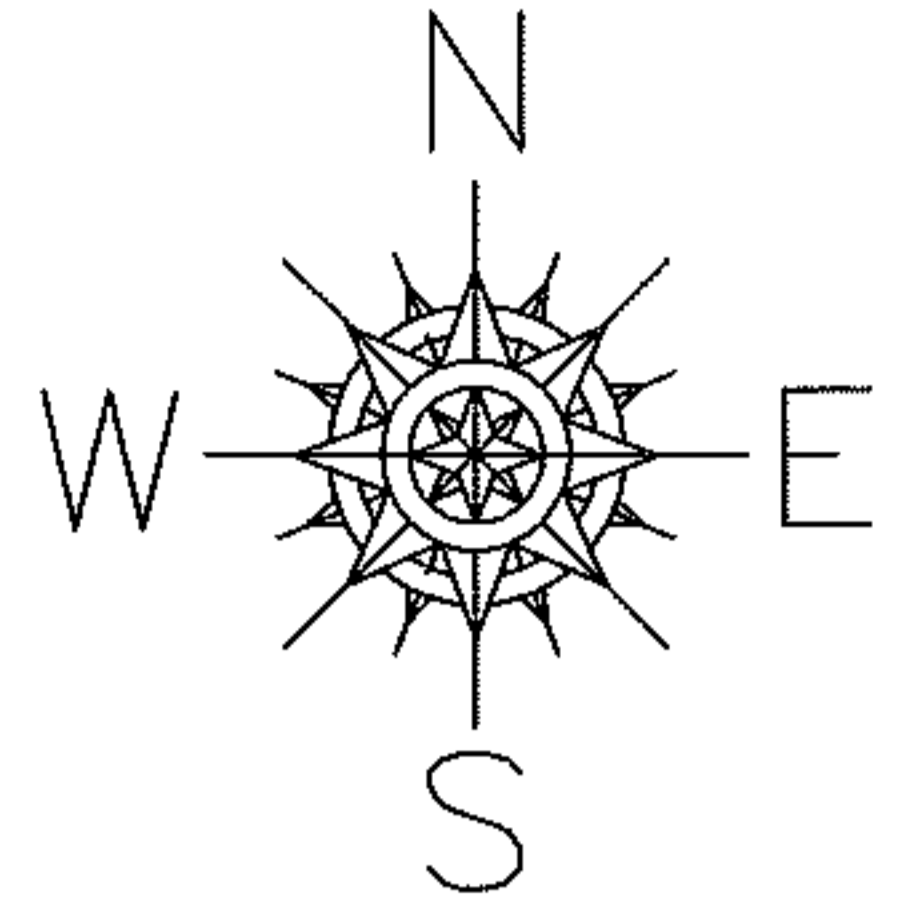


PARENT PARCEL: 06-26-037-000-004

13-02708-D

CHILD PARCEL: _____

STARTING POINT: INTERSECTION OF C/L OF EAST AVE. AND C/L OF E.6TH ST.



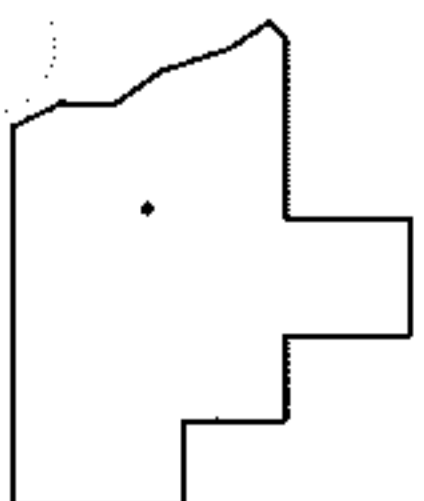
FRONTAGE AND DEPTH TO ACREAGE CORRECTION

06-26-037-000-004

0.27 A.

~~49 X 258~~

CORR. PER SURV. T. SIMON



SPLITS/DEEDS PROCESSED

LORAIN COUNTY TAX MAP DEPARTMENT
226 MIDDLE AVE. ELYRIA, OHIO

SURVEYED BY: THOMAS A. SIMON

CLOSURE: .00:10,000

MAP PAGE(S): 6-120

APPROVED BY: RRM DATE: 4-17-13

SCALE: 1" = 50' PRIOR INST.: 20120436717