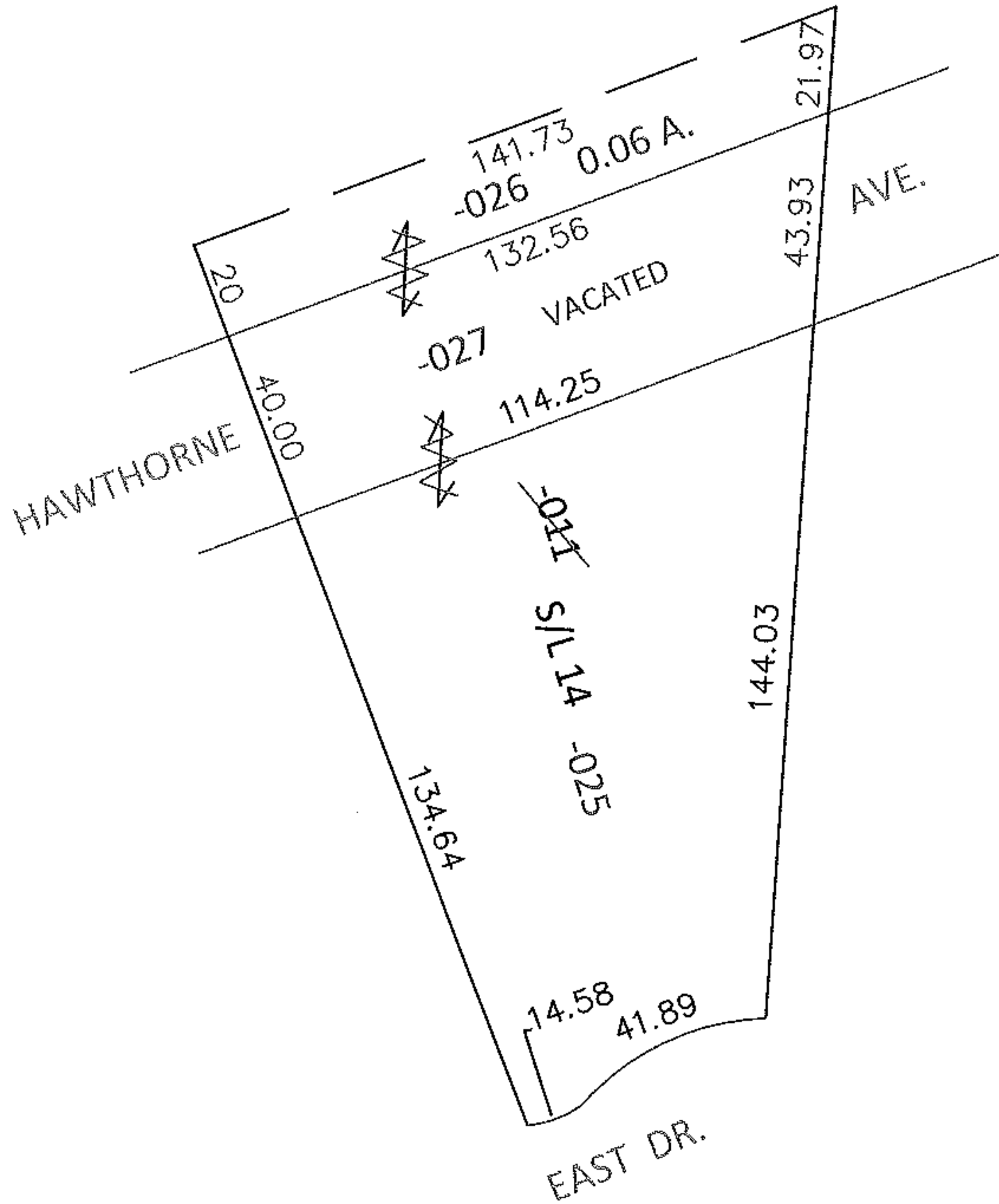
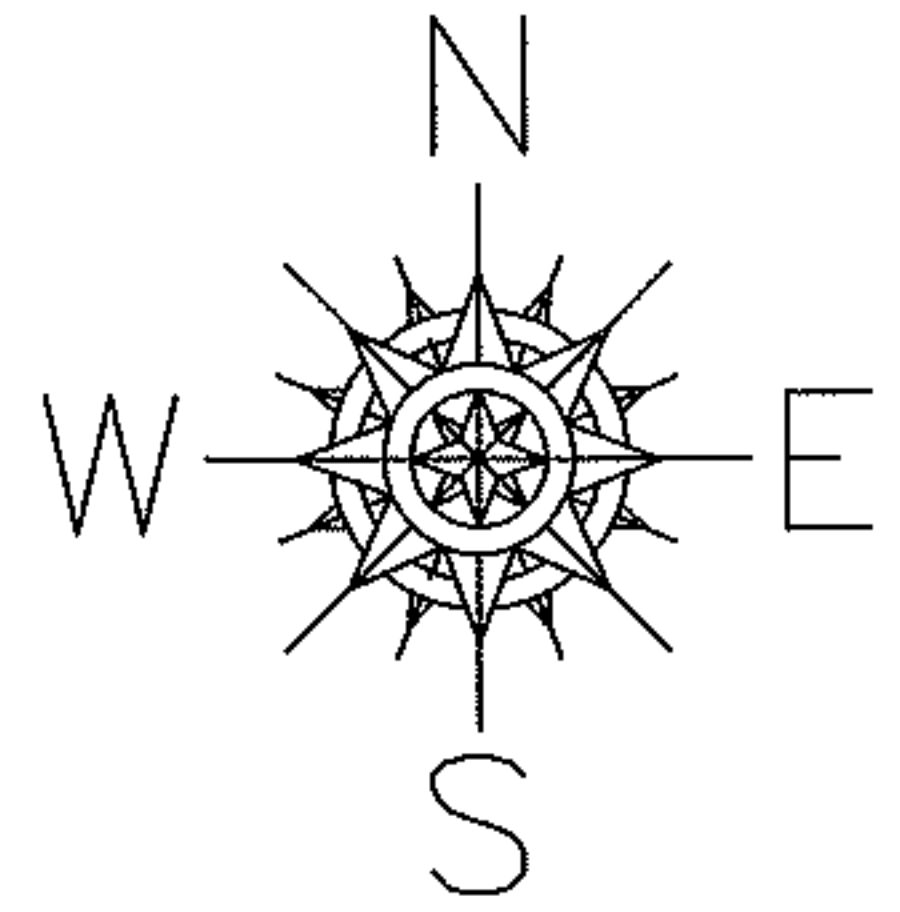


PARENT PARCEL: 03-00-043-107-011

CHILD PARCEL: 03-00-043-107-025 THRU -027

STARTING POINT: S/L 14 IN MAPLE GROVE SUB. (VOL.17 PG.30)

13-02705-U



UNCOMINATION

~~03-00-043-107-011~~

~~56.47 X 209.93 IRR~~

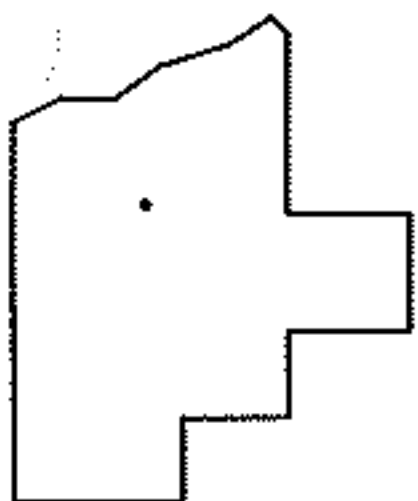
03-00-043-107-025  
56.47 X 144.03

03-00-043-107-026  
0.06 A.

03-00-043-107-027  
40 X 132.56

PER PRIOR DEEDS

REMOVE UPDATE LEGAL FOR 3 LEGALS, 1 PARCEL NO.



SPLITS/DEEDS PROCESSED

LORAIN COUNTY TAX MAP DEPARTMENT  
226 MIDDLE AVE. ELYRIA, OHIO

SURVEYED BY: RAY E. HOLLIS

CLOSURE: 01:10,000

MAP PAGE(S): 3-00-043

APPROVED BY: RRM DATE: 4-8-13

SCALE: 1" = 50' PRIOR INST.: 20120421283