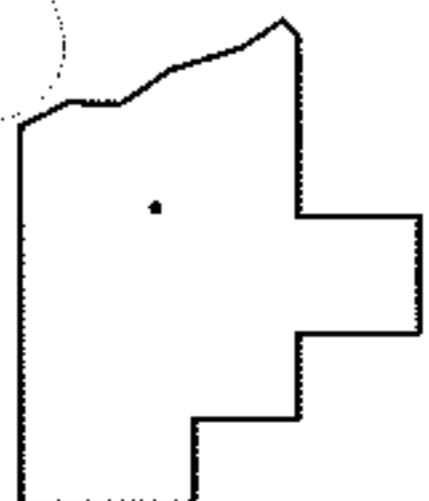
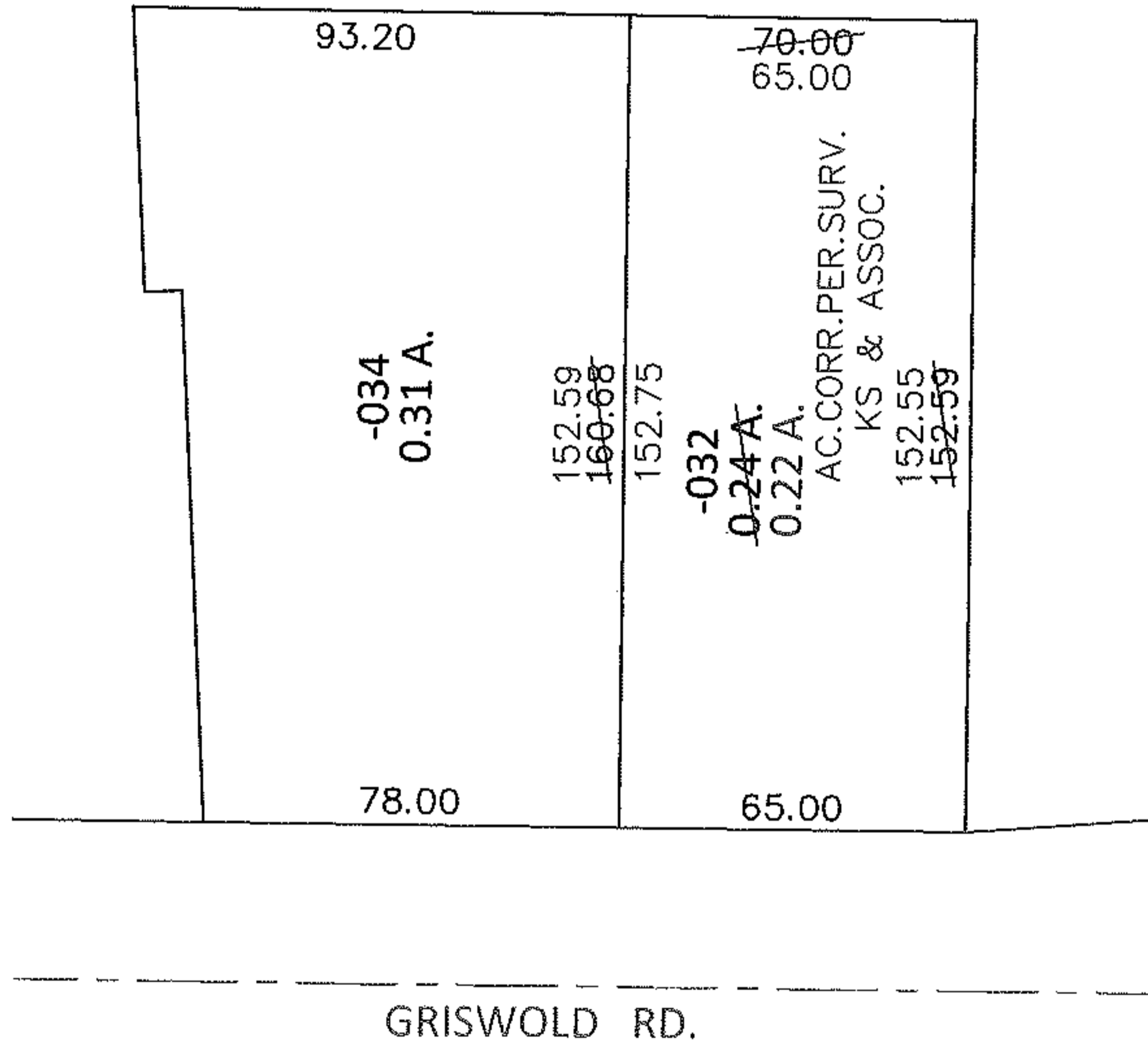
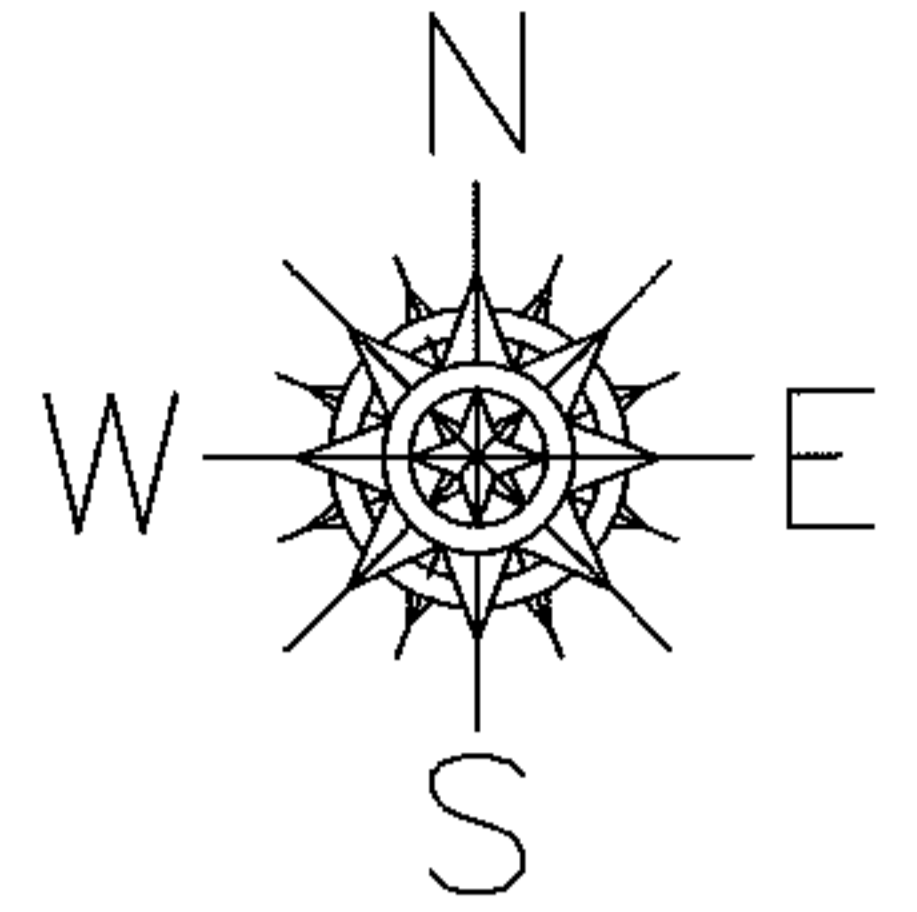


PARENT PARCEL: 06-23-011-101-032

CHILD PARCEL: _____

13-02703-A

STARTING POINT: SOUTHEAST CORNER OF LAND CONEYED TO EDWARD R. KELLEY (DV 1319/110)



SPLITS/DEEDS PROCESSED

LORAIN COUNTY TAX MAP DEPARTMENT
226 MIDDLE AVE. ELYRIA, OHIO

SURVEYED BY: KS & ASSOC.

CLOSURE: .01:10,000

MAP PAGE(S): 6-42

APPROVED BY: RRM DATE: 4-4-13

SCALE: 1"= 50' PRIOR INST.: 20000703644